

CA
CA



Ballet Rosa

DE

MIY

BALLETROSA.COM

Dive into our Academy Collection, an ode to the relentless commitment of dancers returning to the barre day after day to refine their artistry. This collection is a celebration of movement, featuring an impressive range of 50 color options for all leotards, a diverse assortment of styles, plus accessories to complete the look of any dancer.

In cooperation with our esteemed retail partners, we strive to present a comprehensive array of dance essentials, empowering studios to select top-tier, high-performance uniforms. Crafted in Europe using the finest European materials, our products prioritize impeccable fit and functionality.

Our Aspire Collection includes four distinct leglines, meticulously designed to elevate the aesthetics and posture of seasoned dancers. The Modern Classics collection caters to dancers of all levels, from the youngest aspirants to the most advanced, offering an array of skirts, shorts, leggings, warm-ups, and dresses.

To fulfill dress code offerings for male dancers, explore our HOMME catalog, featuring studio essentials as well as fashion. Opt for basic colors for male dancers, or add flair and fun by matching your male dance apparel to leotards in any of our Matte Lycra or Microfiber colors.

Welcome to the new Ballet Rosa Academy Catalog,
where basics become a love letter to the art of dance.

Contents

Aspire Collection

| | |
|-----------------|----|
| Allegra Legline | 09 |
| Margot Legline | 15 |
| Polina Legline | 21 |
| Maya Legline | 27 |

Modern Classics

| | |
|--------------------------|-----|
| Basic Leotards | 35 |
| Skirts and Bottoms | 85 |
| Dresses | 101 |
| Warm-ups and Accessories | 112 |

| | |
|---------------|-----|
| Color Guide | 140 |
| Code Matching | 144 |
| Index | 148 |
| Logo Program | 156 |



ASPIRE COLLECTION

Allegra Legline - Margot Legline - Polina Legline - Maya Legline

Thoughtfully curated to embody the perfect fusion of style and functionality, the Aspire Collection invites you to dance with unparalleled grace and confidence. This collection was created for the aspiring dancer who wants to present herself in her best form. Choose from one of four different leglines, each designed to enhance the length of the legs and accentuate the seasoned dancer's training and technique. All styles are now available in the full range of 50 color options, including both our buttery-soft Microfiber and form-fitting Matte Lycra. All of these fully front-lined leotards serve as the epitome of a polished studio uniform, a refined choice for auditions, or the perfect companion for everyday rehearsals and classes.

Allegra Legline



Having closely observed accomplished dancers from around the globe rolling up their leotards at the legline to achieve a more elongated aesthetic, we have decided to answer their call. The Allegra legline is an adjustable drawstring design, allowing dancers to customize their look based on their needs or desires. Pull the drawstrings tight to transform the angle of the leg opening into a stylish high-cut ruche, or opt to leave the drawstring untouched for a lower, ballet cut legline, providing comfort and coverage.

Pictured:
Rio wearing Opal leotards in Angel Blue

Available in Microfiber or Matte Lycra
Please see pages 141 and 142 for color options

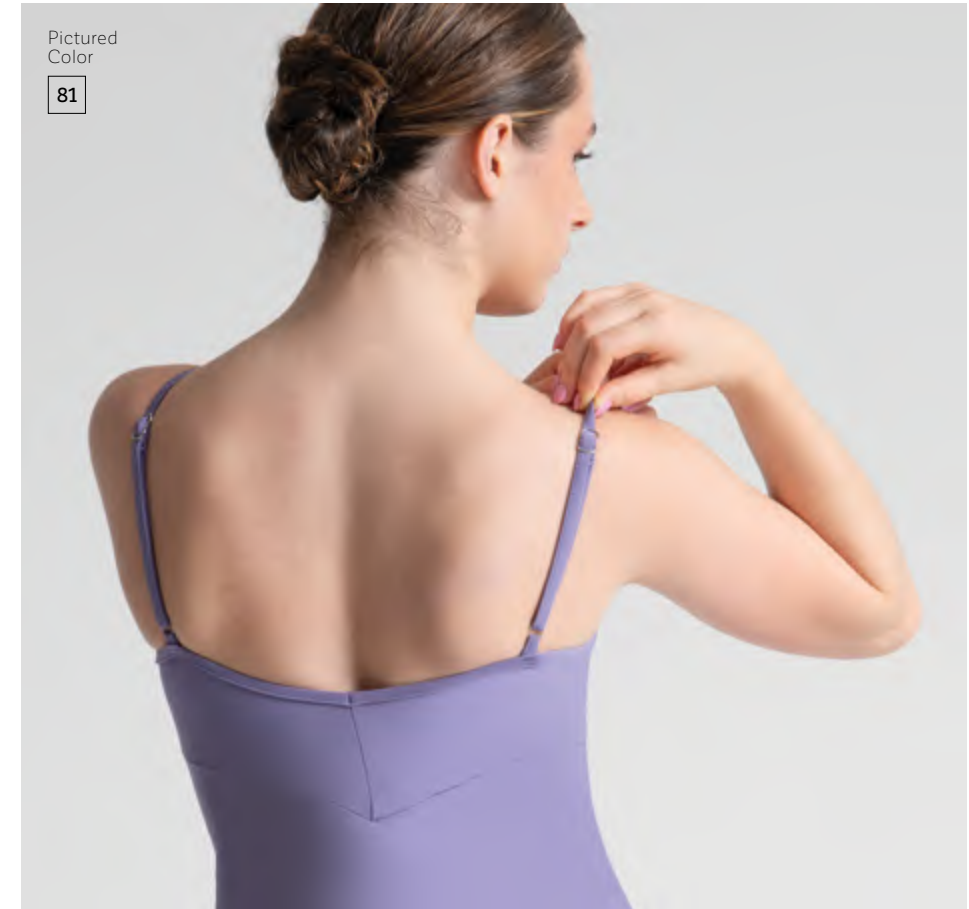


Verona

Featuring our adjustable ruche drawstring legline, Verona is a camisole leotard with seamless neckline and adjustable straps. The pinch front detail and princess seams create a tailored silhouette, while the mid-back with seam detailing adds the finishing touch.



Pictured
Color
109



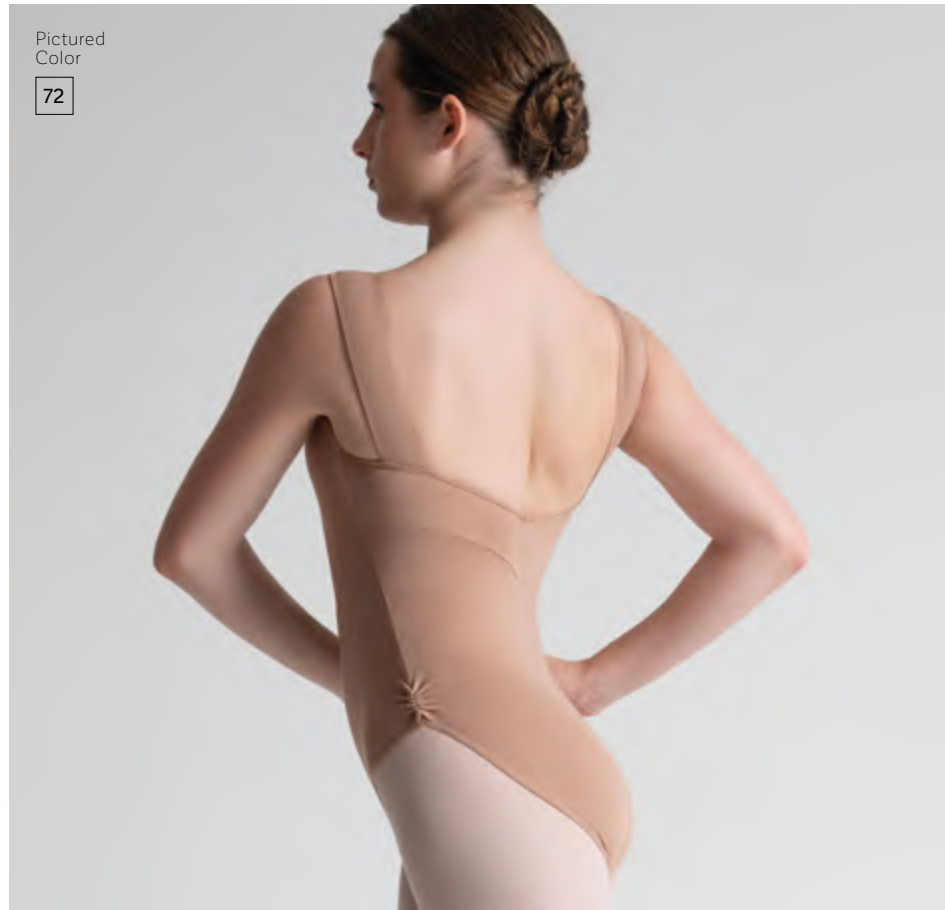
Pictured
Color
81



Pictured
Color
17

Sasha

This tank leotard boasts a pinch front detail that accentuates the seamless sweetheart neckline. A subtle V-back with seam detailing adds elegance to the design. The adjustable ruche drawstring legline guarantees a personalized fit for every dancer.



Pictured
Color
72

Opal

Opal's pinch front detail and seamless neckline create a clean look. Princess seams enhance the silhouette, while the adjustable legline ensures a personalized fit. The delicate cap sleeves and back seam detailing add a touch of sophistication.



Pictured
Colors
15 88 93

Margot Legline



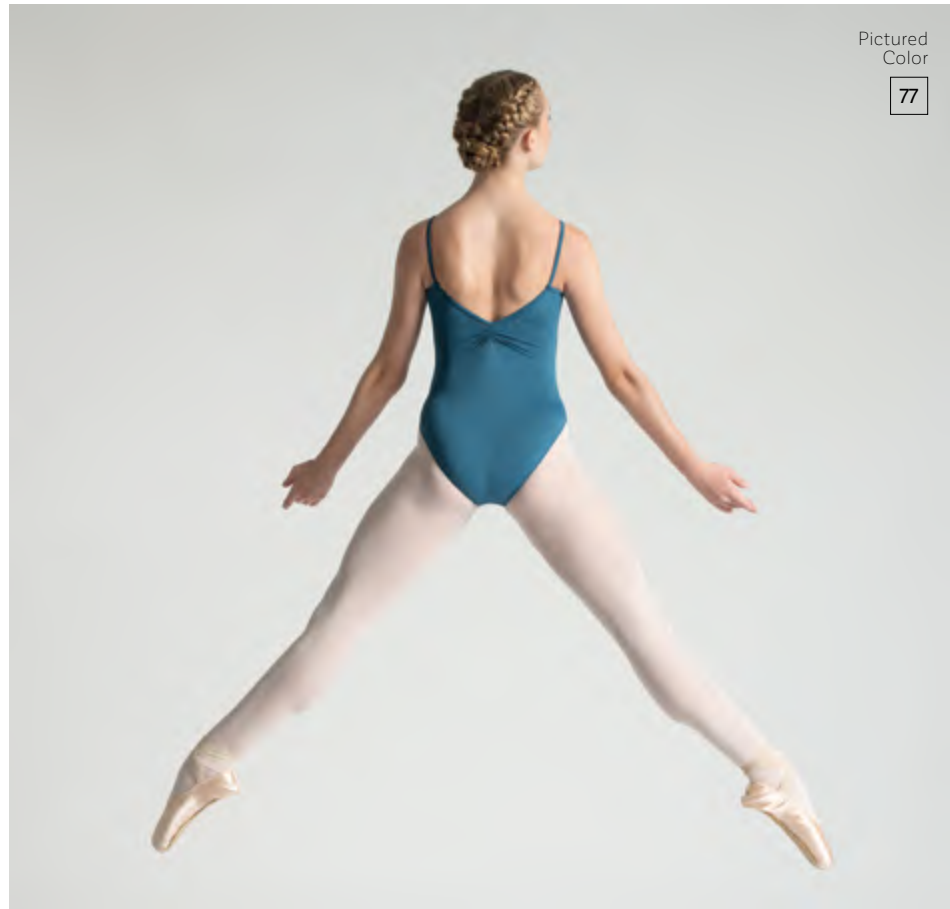
Tailored for the seasoned dancer, the Margot legline is crafted to elevate the aesthetic of the legs while highlighting graceful alignment and precise positioning over the hip. This design showcases a seamless, straight cut extending from the hip bone towards the back, resulting in a flattering high cut that maintains coverage of the seat. The Margot legline is a testament to thoughtful design, offering both visual appeal and functional coverage for dancers who prioritize both style and comfort.

Pictured:
Evangeline wearing Jania leotards in Sedona

Available in Microfiber or Matte Lycra
Please see pages 141 and 142 for color options

Lovette

A modern interpretation of a classic princess seam camisole leotard, redesigned with inverted diagonal seams extending from the empire waistline to the top of the Margot legline. Lovette is ruched at the low mid-back and features a seamless scoop neckline.



Jania

Perfect for any aspiring dancer, this refined camisole leotard features a twisted front ruche, seamless neckline, Margot legline, a delicately scooped back, and thoughtfully designed violin-shaped princess seams on the front and back.



Pictured
Color

16



Itzel

A flattering empire waist, a seamless sweetheart neckline, and princess seams elevate this cap sleeve leotard beyond basic. Itzel is ruched at the front and back and features our high, squared, and seamless Margot legline.

Pictured
Colors

13

47



Cannelle

This delicate leotard has fine tank straps and a sophisticated seamless V-front neckline with an elegant gather. Cannelle features princess seams on the front, our flattering seamless Margot legline, and a wide medium-low back finished with ruche.

Pictured
Colors

73

14

89



Polina Legline



Crafted with the skilled dancer in mind, the Polina legline is meticulously designed to highlight the natural contours of the body. Enhanced by converging seams that gracefully connect at the hip, the Polina legline draws inspiration from the dancer's alignment and technique, all the while elegantly elongating the legs. This thoughtful design is an inspiration to the seamless fusion of aesthetics and functionality, offering dancers a sophisticated and dynamic look that complements their artistry.

Available in Microfiber or Matte Lycra
Please see pages 141 and 142 for color options

Pictured:
Jada wearing Riva leotards in Poudré

Kali

Princess seams converge at the hip bone with curved seams wrapping from the back of the leotard, creating our flattering Polina legline. The elegance of this camisole leotard is enhanced by Kali's broad, seamless scooped neckline and wide, scooped mid-low back.





Pictured
Color
77



Pictured
Color
11

Tori

A seam from the back elegantly glides across the dancer's waist, converging with front princess seams and creating the apex of our Polina legline. A stylish update to a classic short sleeved leotard, Tori features a broad, seamless, square neckline and square mid-back.

Riva

Riva offers a unique swirl ruche atop a scooped seamless neckline, comfortable tank straps, and a broad scooped mid-back. Front princess seams and seams wrapping from the back that converge at the top of the Polina legline, extending the length of the leg and body.



Pictured
Colors
01 60 72

Pictured:
Miina wearing Azora leotards in Grenadine

ASPIRE
COLLECTION

Maya Legline



While some dancers choose a traditional ballet cut legline, others want to stand out, and those dancers choose our Maya legline, a gracefully elegant high-cut designed to accentuate the length of the legs while highlighting flawless body alignment. This classic high-cut creates a visually striking and elegant silhouette, drawing attention to the leg muscles and allowing for a greater range of motion.

Available in Microfiber or Matte Lycra
Please see pages 141 and 142 for color options

Darie

This uniquely designed seamless boatneck tank leotard showcases our flattering high cut Maya legline to enhance the length of the dancer's legs. The back features silhouette seam lines and a seamless square mid-low back for a refined look.



Pictured
Colors

23 04 83

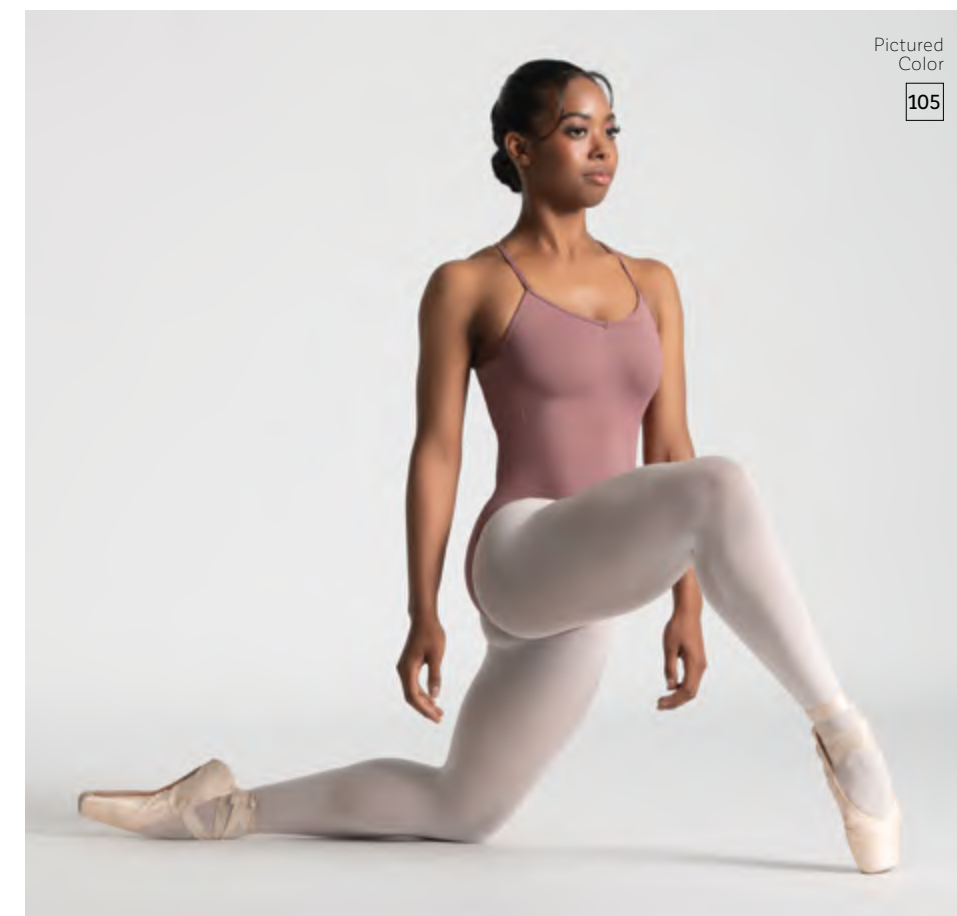
Pictured
Color

74



Eliette

Eliette features a scooped neckline that comes to a delicate V, our high cut Maya legline, and camisole straps that cross at the high back. The seamless open back finishes with a squared off line at the mid-low back, and is accented by flattering diagonal seams along the back.



Pictured
Color

105

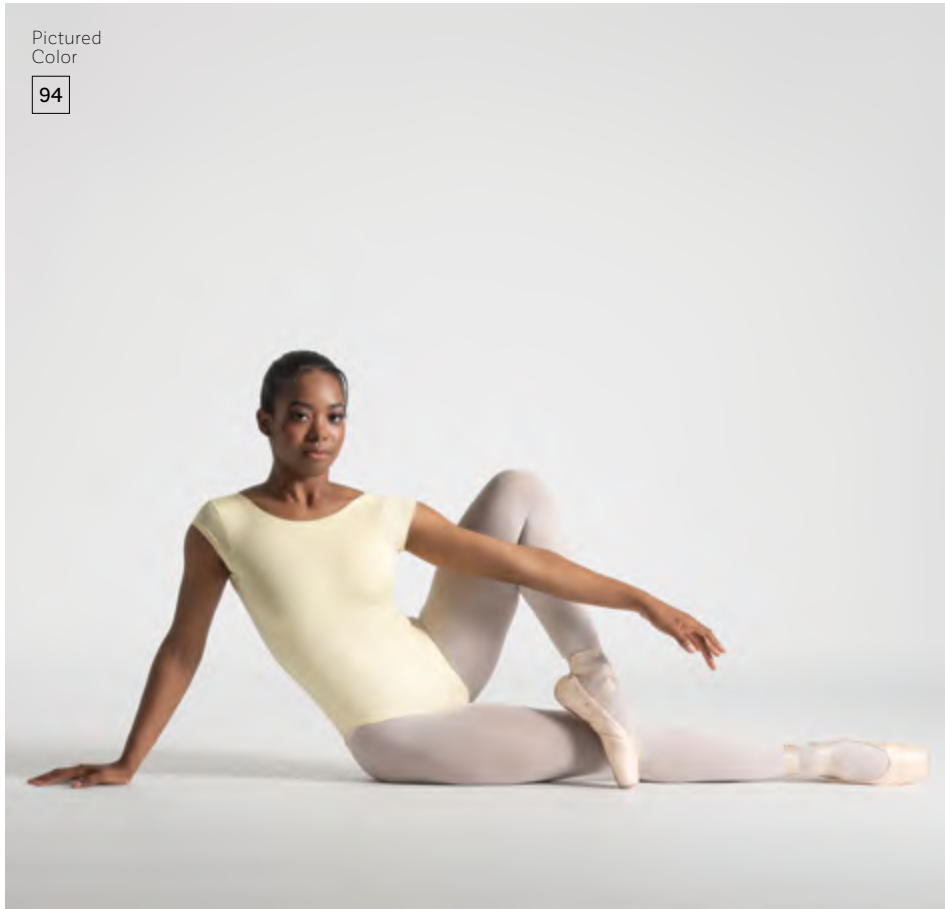
Pictured
Color
89



Fauve

Refined simplicity at its best, Fauve features a high cut legline, a seamless boatneck, and barely-there cap sleeves. Stylish accents are found on the back, including a seamless mid-low squared cut and flattering back seam detail.

Pictured
Color
94



Azora

Azora is a chic half sleeve leotard featuring our high cut Maya legline. The seamless finishing of the boatcut neckline is echoed in the back and is accented with silhouetted back seams. The broad open back tapers to a square finish that hits at the mid-low back, framing the dancer perfectly.



Pictured
Colors
18 47 109



Modern Classics

Modern Classics for Ballet Rosa Academy epitomizes our commitment to every dancer, featuring a curated selection of dance essentials to ensure comfort and quality everyday at the barre and in rehearsal. Our foundational leotard collection stands as a comprehensive choice for studios worldwide. Elevate your look by selecting from our refined dresses, or pair your leotard with a variety of complementary options including skirts, shorts, leggings, warm-ups, and accessories.

Pictured:
Capucine leotards
Paule T-shirt
Sean shorts



Basic Leotards

Our core leotard collection maintains our signature comfort standards, boasting full front lining and full seat coverage at the legline. Evolving to accommodate a range of preferences, each basic leotard is available in both our Italian-made Matte Lycra or Microfiber, expanding our offerings to 50 vibrant fabric choices. Designed with a focus on studio uniform standards, this collection not only offers versatility but is also open to customization based on your specifications. While subject to order minimums, this flexibility allows for a personalized touch that caters to individual preferences.

Available in Microfiber, Matte Lycra or Tencel
Please see pages 141, 142 and 143 for color options

Pictured
Color

12



Megan

This go-to leotard features wide camisole straps that provide unparalleled comfort and essential support. Megan boasts a mid-rise straight back and neckline, ballet cut leg line, and empire waist seam below the bust.



Pictured
Color

04

Pictured
Color

03



Monica

Monica is a camisole leotard inspired by a tank, featuring wide camisole straps that create security and style. Monica features a straight front neckline with empire waist seam and an elegant V-back.

Pictured
Colors

80

104



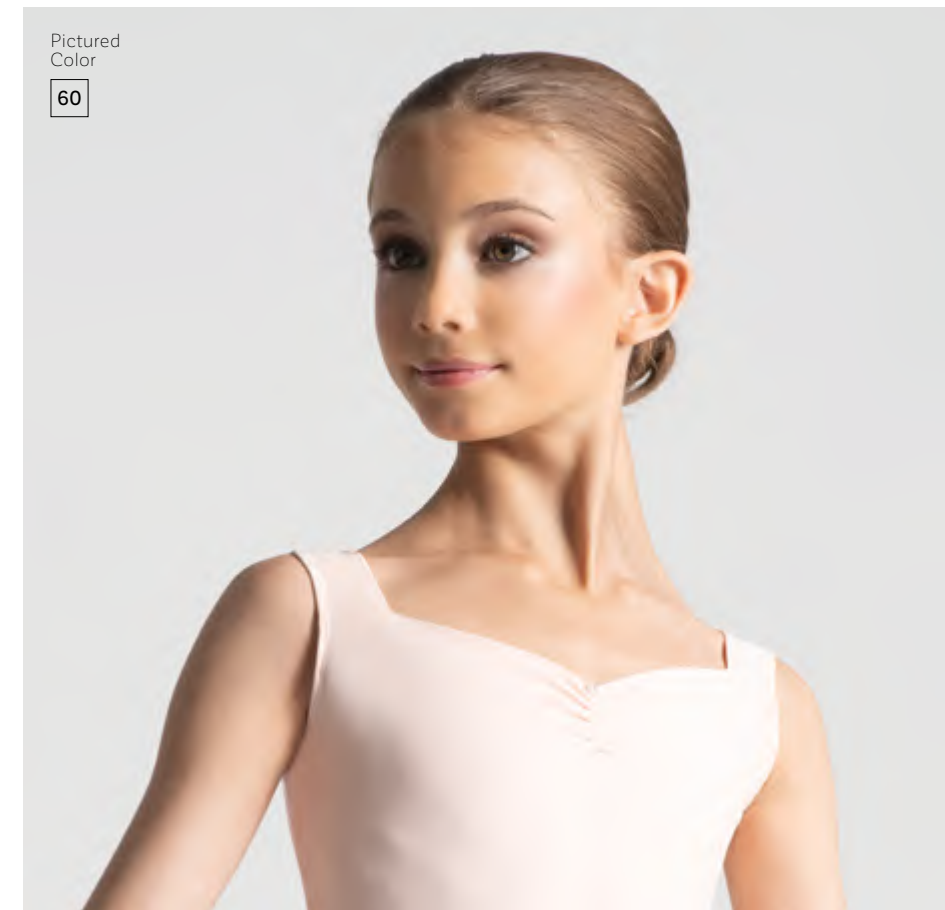
Pictured
Colors

95 11



Pictured
Color

60



Simplicity at its best, Enora is a tank leotard featuring a seamless pinch front sweetheart neckline and scoop mid-back. Enora's clean front and back silhouette allow the dancer to shine.

Enora

Pictured
Colors

88 93 83



Arya

Arya is a sophisticated yet understated wide strap leotard with pinch front and square mid-back. Full front princess seams accentuate the figure, while a ballet cut legline maintains modesty.

Pictured
Colors

80

Male dancer wearing: Avelino shorts and Hugo sleeveless shirt



Babette

Find comfort and style in this best-selling silhouette that features a V-front neckline created by a beautiful front ruche. Tank straps and a round mid-back show off the best of every dancer.

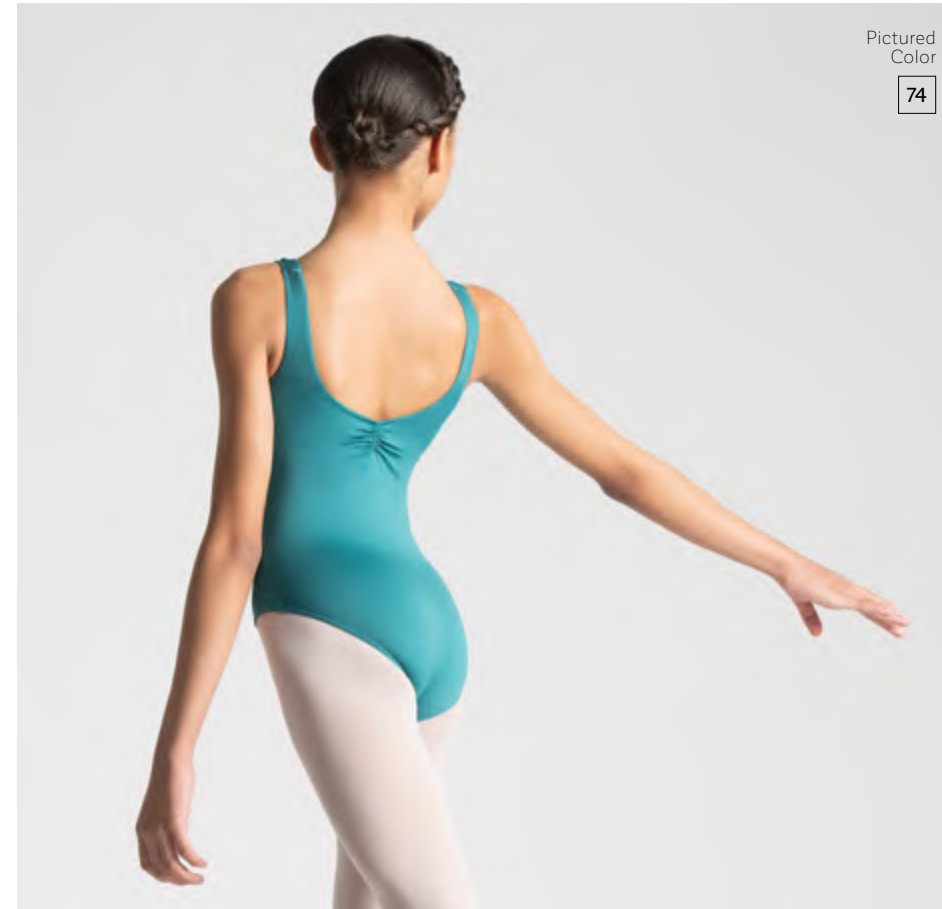
Pictured Colors
19 105 26



Yolanda

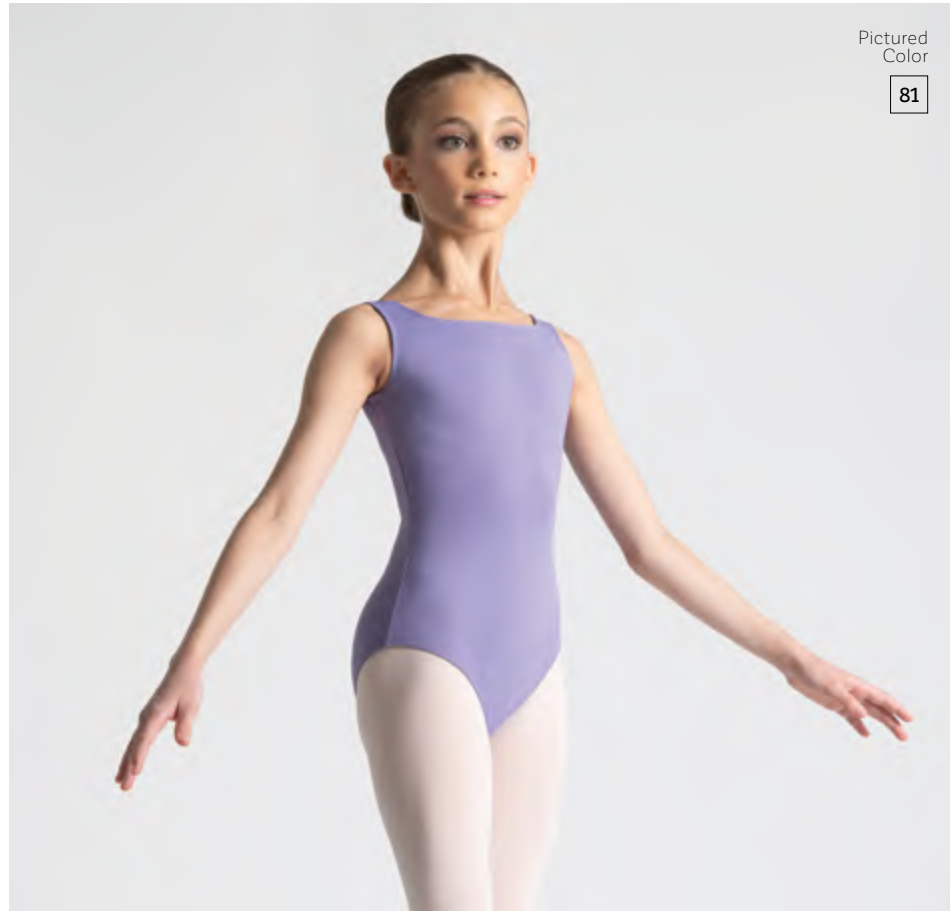
Perfect for everyday, Yolanda is an elegant version of a classic tank leotard with a ruched front and back and ballet cut legline.

Pictured Color
74



Pictured Color
77





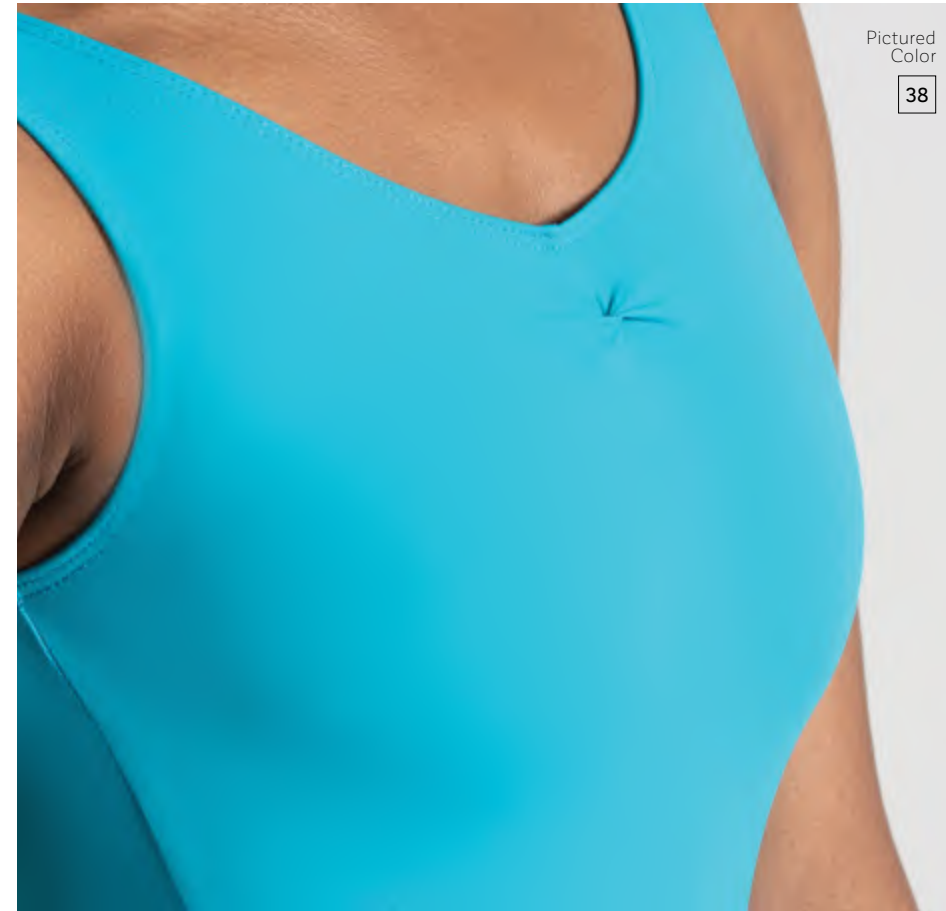
Pictured
Color
81

Delphine

Elegant simplicity at its best. A timeless mid-back ruche and flattering square front neckline make the Delphine an everyday modern classic.



Pictured
Color
15



Pictured
Color
38

Elyane

This classic tank leotard features a scooped front and a round mid-high back, balanced with a central front seam and twist front ruching accent. Elyane is a regulation style ideal for uniforms.

* Belt sold separately · Page 133



Pictured
Colors
57 07

Pictured with Cibelle belts

Pictured Color
86



Maité

Beautifully constructed with tank sleeves, a round neckline, a scoop mid-high back, Maité is an essential uniform piece. Pair it with the optional belt in matching color to complete the look if required.

* Belt sold separately · Page 133

Pictured Colors
04 90



Pictured Color
96



Belle

A timeless boatneck front combines with a mid-low scoop back to create simplicity at its finest. The Belle tank leotard looks as flattering on young dancers as on the most advanced.

Pictured Color
82



Pictured
Color

93



Dorah

Wear it multiple ways by adjusting both the front and back ruche to your taste. The Dorah tank leotard features double princess seams on the front delicately stopping just below the bust.

Pictured
Color

16



Luana

Luana's ruched front and back allows for adjustment to the dancer's comfort and taste. This tank leotard has front princess seams that contour the body to offer a flattering fit.

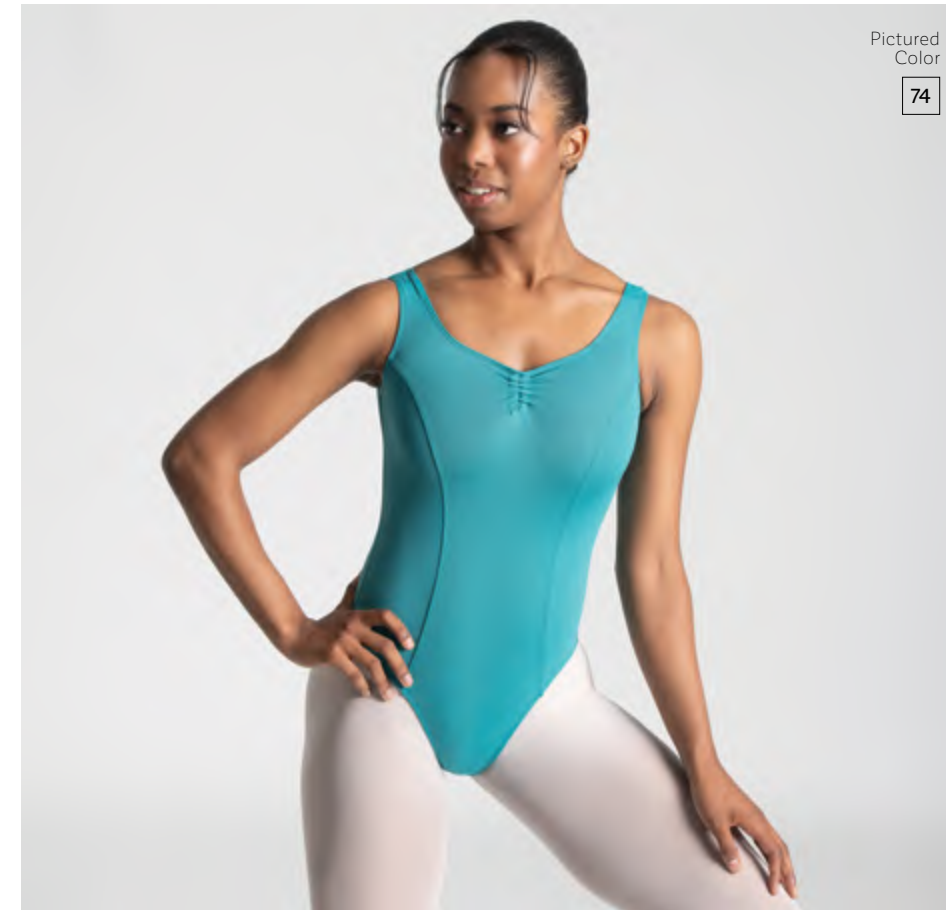


Pictured Color
83



Isla

An adjustable ruched front with shaped princess front seams are a charming addition to this tank style leotard with mid-high scooped back. Perfect to meet class regulations or for any studio uniform.



Pictured Colors
81 96



Pictured
Colors

07 08 26



Marléne

For an added touch of sophistication to an everyday dance wardrobe, Marlène's high neck stands out. A small keyhole front and larger keyhole back finish the design of this sleeveless leotard.

Pictured
Color

38





Michelle

Michelle features an elegant scoop front neckline that seamlessly transitions into an intricate strappy back. This camisole leotard boasts that basic doesn't have to be boring.



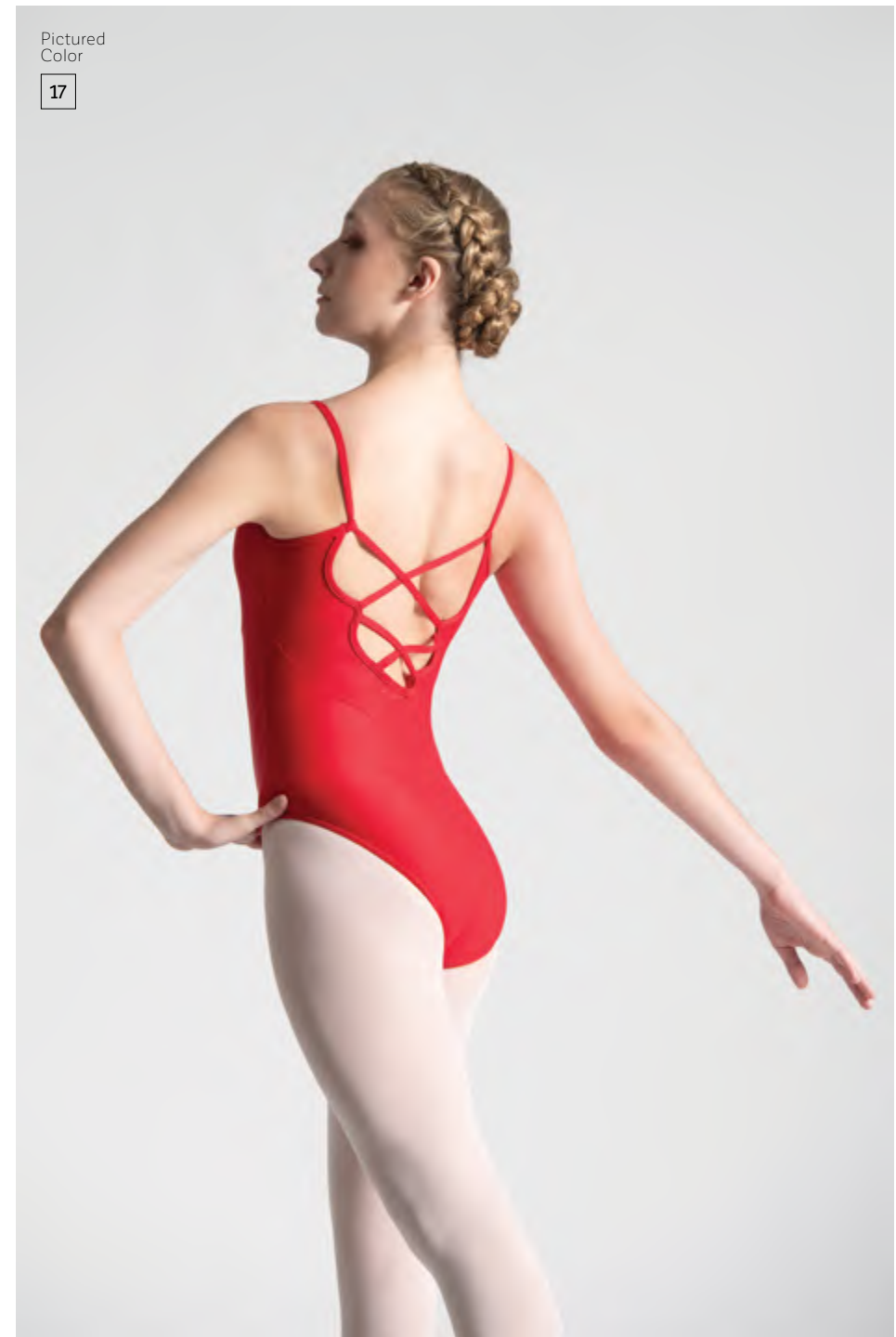


Pictured
Colors

16 73 109

Suzette

Suzette elevates this camisole leotard with a captivating strappy back, empire seam and flattering back seam detail. This scoop front leotard ensures a secure and comfortable fit and adds a touch of sophistication to your everyday.



Pictured
Color

17

Capucine

Capucine is a classic camisole leotard with ruched front accent and wide mid-low V-back, perfect for class or dress code and for dancers of all ages.

Pictured
Colors
11 90 83

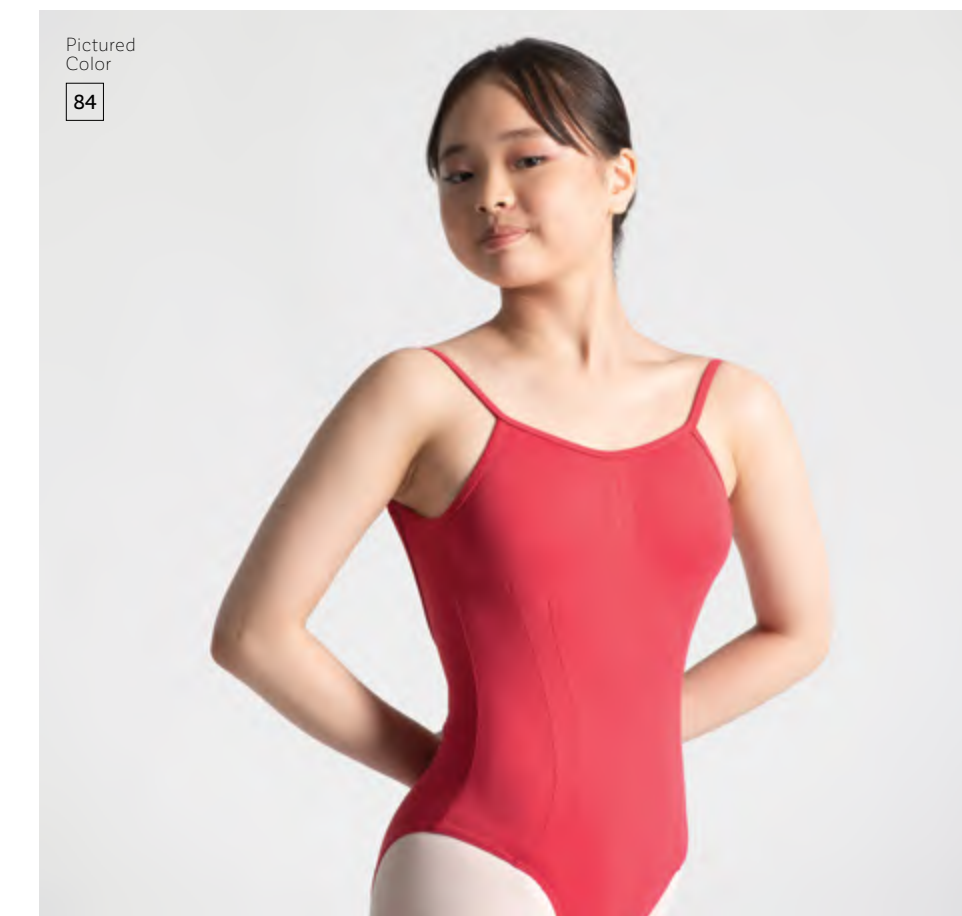


Pictured
Colors
01 19

Jia

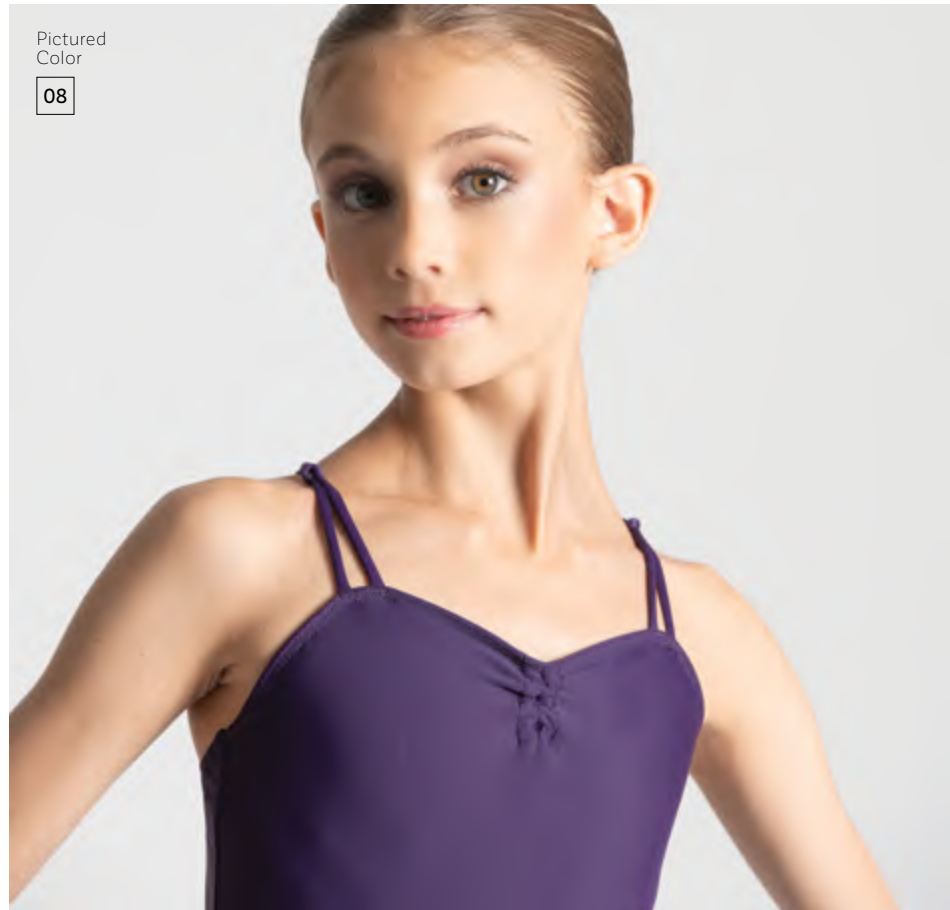
Jia benefits from multiple looks in one, thanks to an adjustable pinch in both the front and the back. This camisole leotard stands out from the rest with subtle but effective double princess lines that extend front the legline to bust.

Pictured
Color
84



Zella

Simply sweet, this distinctive leotard features double camisole straps knotted together below the collarbone, and an adjustable front ruche to create an effortlessly feminine look. Zella is finished by a straight mid back and ballet cut legline.



Pictured
Color
08



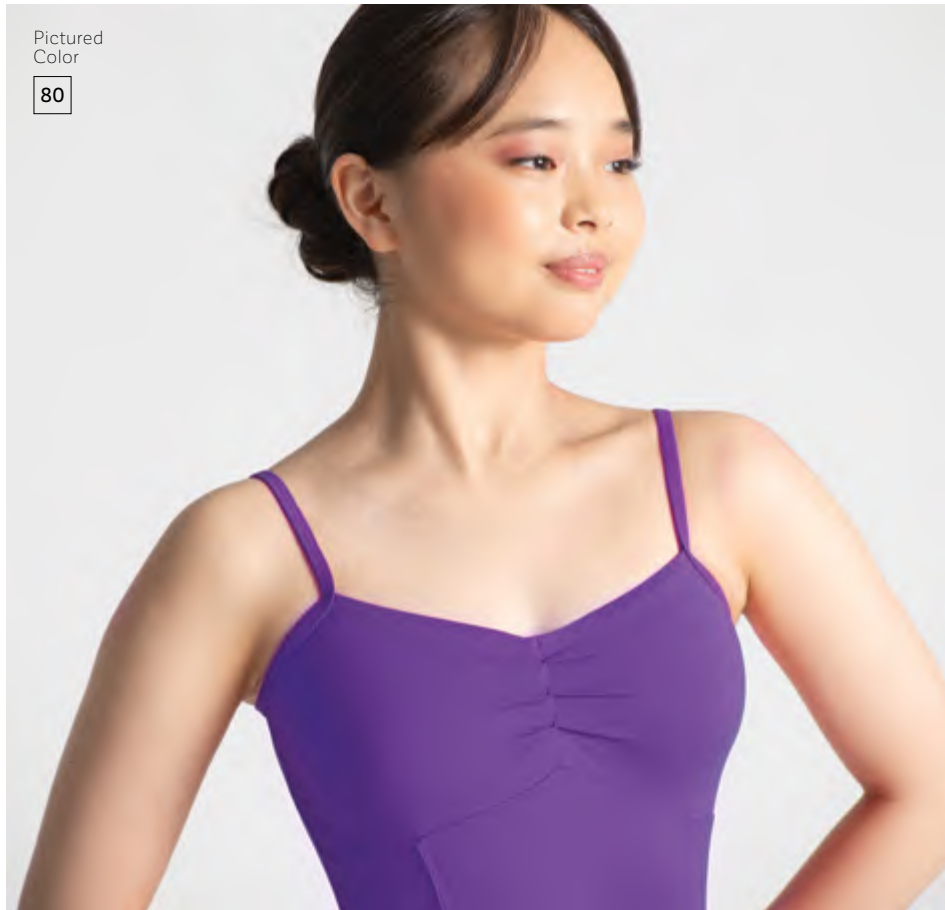
Pictured
Colors
107 82

Alodia

This classic camisole leotard has a little secret: the front ruche is adjustable to the dancer's own comfort. Alodia features a square mid-back with center back seam for better fit, and a scooped neckline that adjusts to a V when ruched.



Pictured
Colors
80 57 12



Pictured
Color
80

Grazia

Grazia's name says it all. With front princess seams, a straight mid-back, a sophisticated empire panel, and exquisitely placed gathers along the bust, this camisole style flatters dancers of all ages.

Adult sizes feature removable bust padding.



Pictured
Colors

89 84 07

Pictured
Color

14



Rosalie

Meet Rosalie, where comfort and versatility take center stage. This camisole leotard features a subtle round neckline and customizable straps for a perfect fit. Rosalie effortlessly combines practicality with timeless style.

Pictured
Color

13



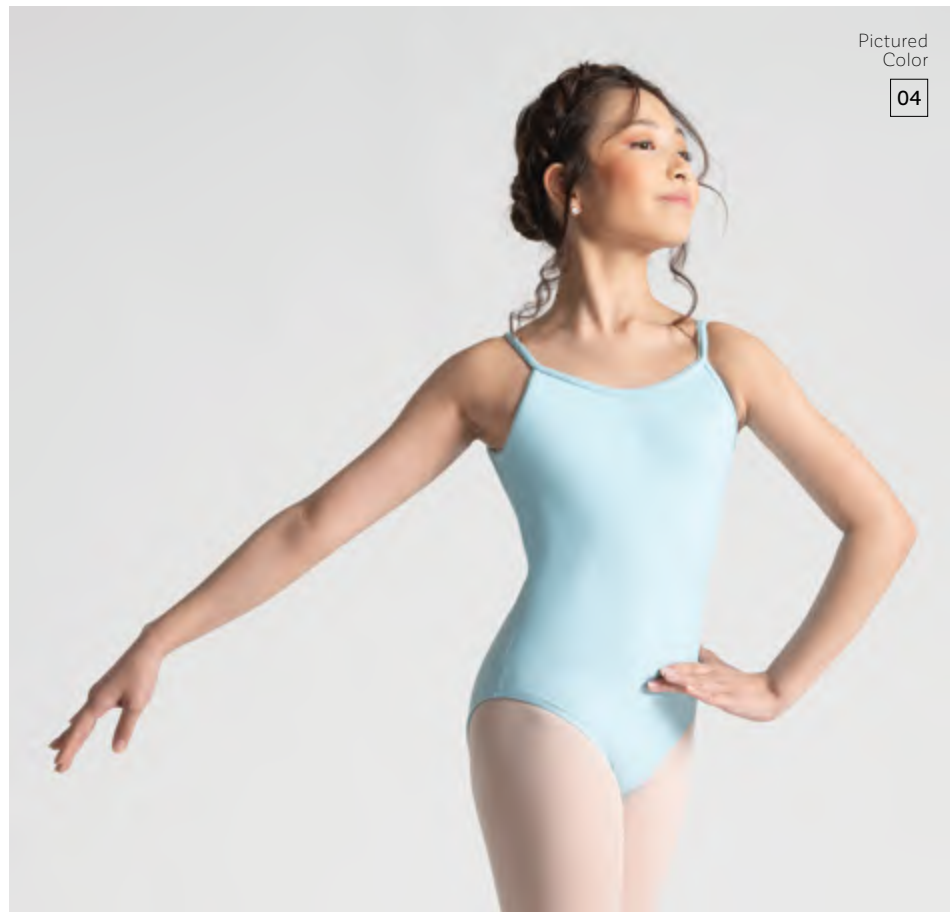
Pictured
Color

107



Candice

The most classic of cuts, the Candice is an easy choice for clean studio uniforms. This camisole leotard features a subtle scoop front and V-back, as well as full front lining and ballet cut legline.



Pictured
Color
04



Pictured
Color
94

Valérie

Beautifully simple, the Valérie leotard features a straight mid-back and fine straps. With a modest straight neckline, this camisole leotard is perfect for dancers of all ages.



Pictured
Colors
90 80 15



Pictured
Colors

83 07

Pictured with Cibelle belts



Pictured
Color

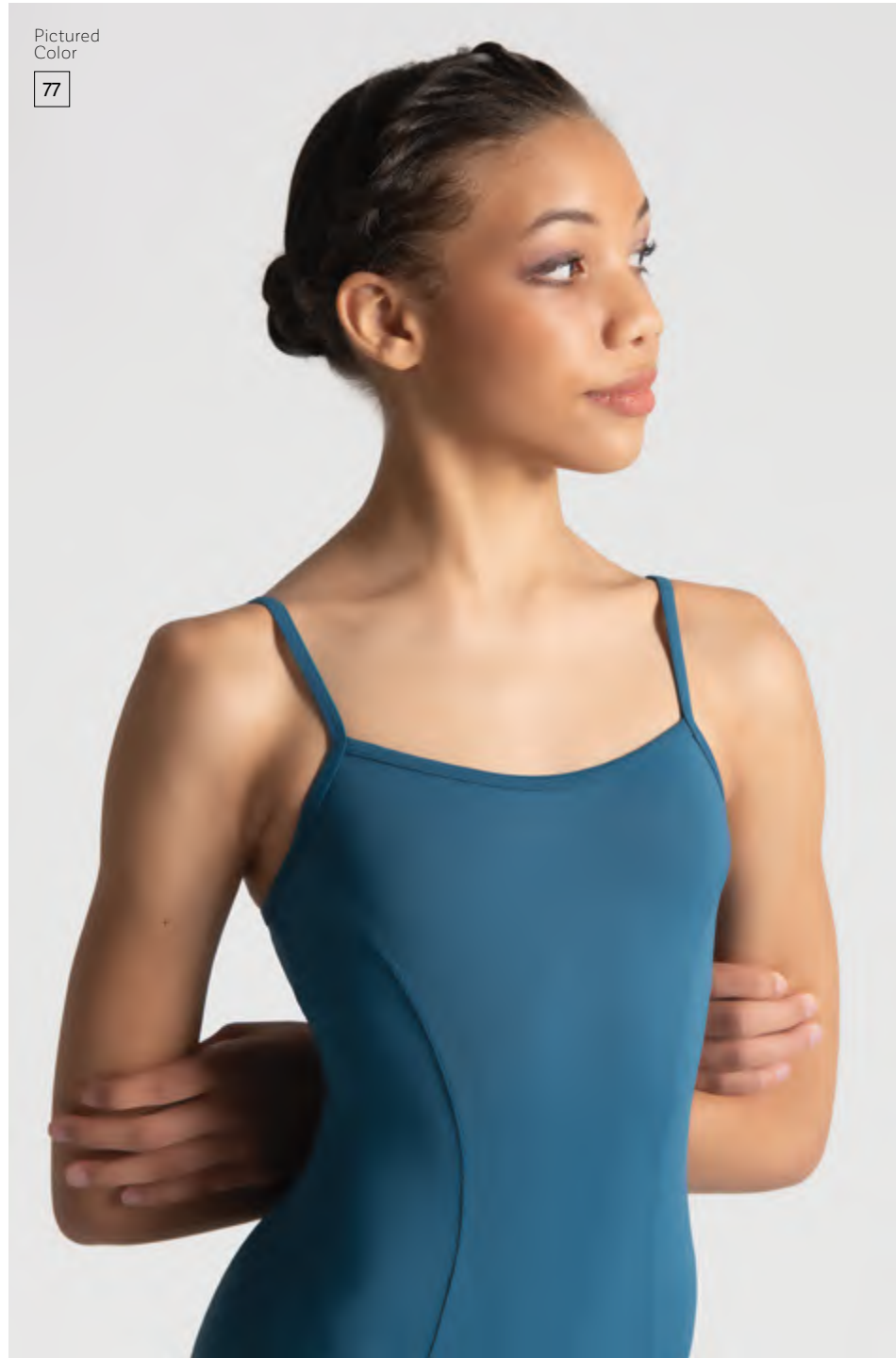
01

This camisole leotard features a straight mid-back, delicate scoop front, and satiny elastic straps that look beautiful alone or match perfectly with an optional hip alignment belt.

Gilliane

* Belt sold separately · Page 133

Pictured
Color
77



Anaya

Anaya's shaped princess line front seams elegantly lengthen the dancer's lines. With a square neckline and straight mid-back this camisole leotard is a sophisticated classic.



Pictured
Colors
82 09

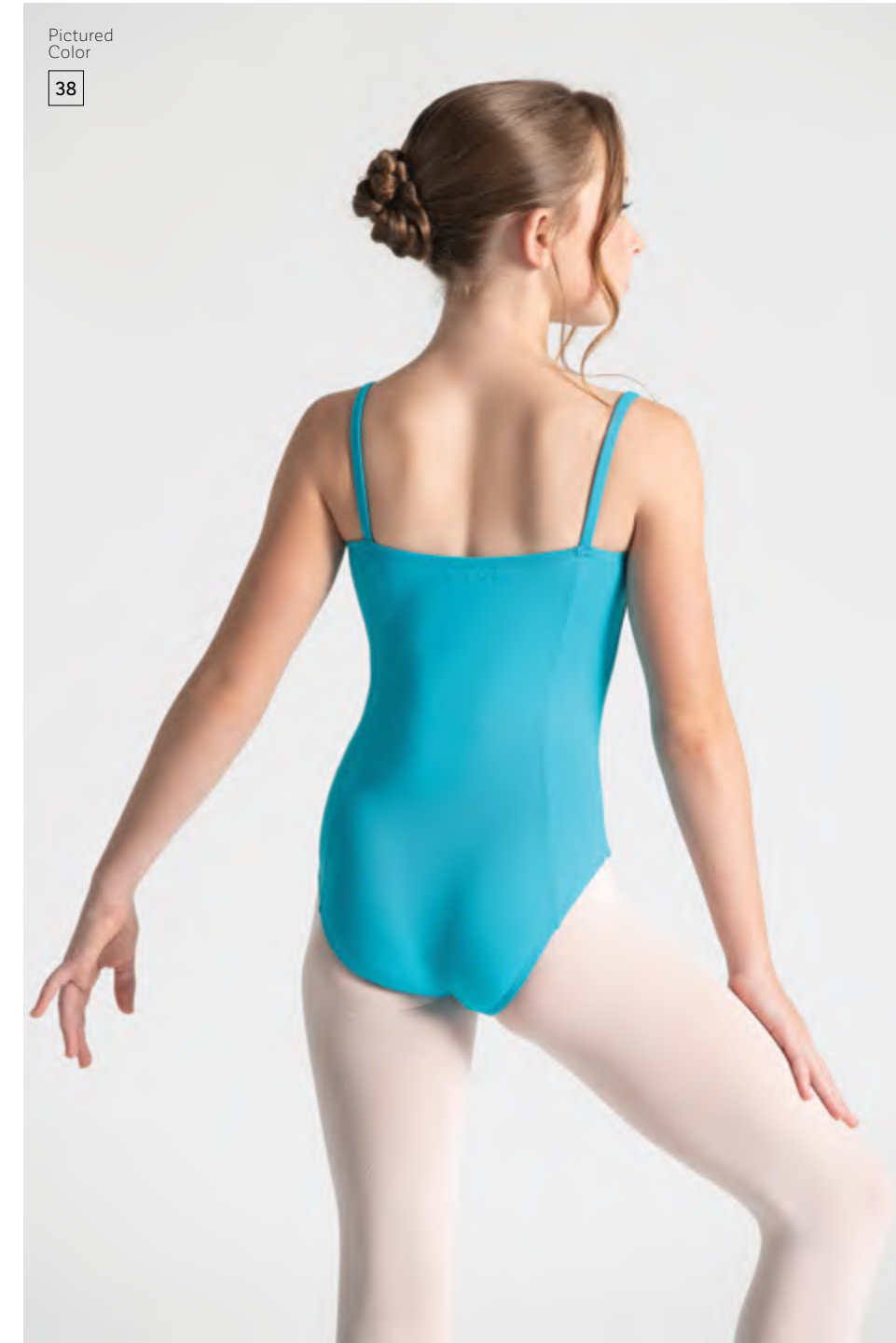


Pictured
Color
74

Aube

Aube is a classic fine strap leotard with front and back princess seams to flatter each movement. A scooped front with nice coverage and straight mid-back make this a great style for studio uniforms and everyday use.

Pictured
Color
38





Pictured
Color
109

Universally flattering, the Béatrice features a chic pinch front, graceful cap sleeves, and an appealing V-back design. Elevate your performance with the timeless appeal of Béatrice.

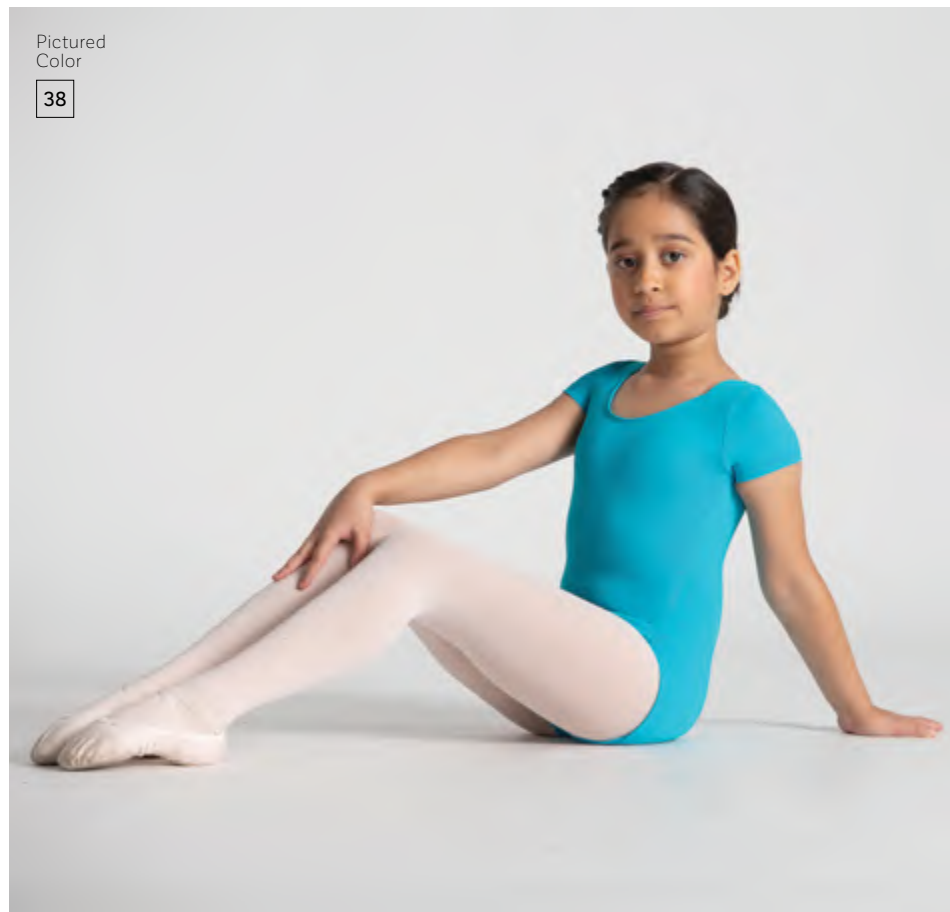
Béatrice



Pictured
Colors
17 84 82

Haline

Our classic short sleeve leotard features a round neckline, scoop mid-high back, and ballet cut legline. Fit for dancers of all ages, Haline is a regulation style leotard perfect for class or exams.



Pictured
Color
38



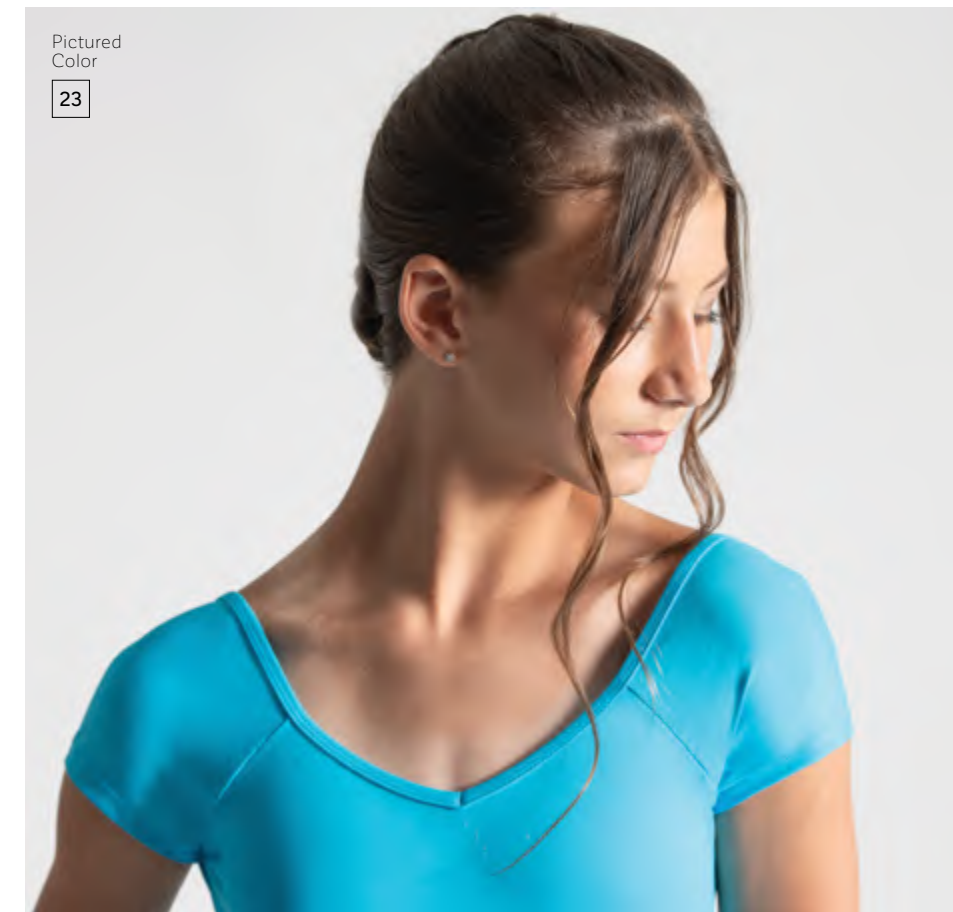
Pictured
Colors
12 03



Pictured
Colors
13 16

Frida

The Frida cap sleeve leotard is an elegant classic. This style offers a flattering raglan sleeve, a broad V-front neckline, and wide medium-low back finished with a beautiful ruche.



Pictured
Color
23

Melodie

This flutter sleeve leotard adds a touch of sweetness to your dance ensemble. The pinch front creates an attractive V-front design and the back is finished with a conservative high scoop.



Pictured
Color
96



Pictured
Colors
03 86

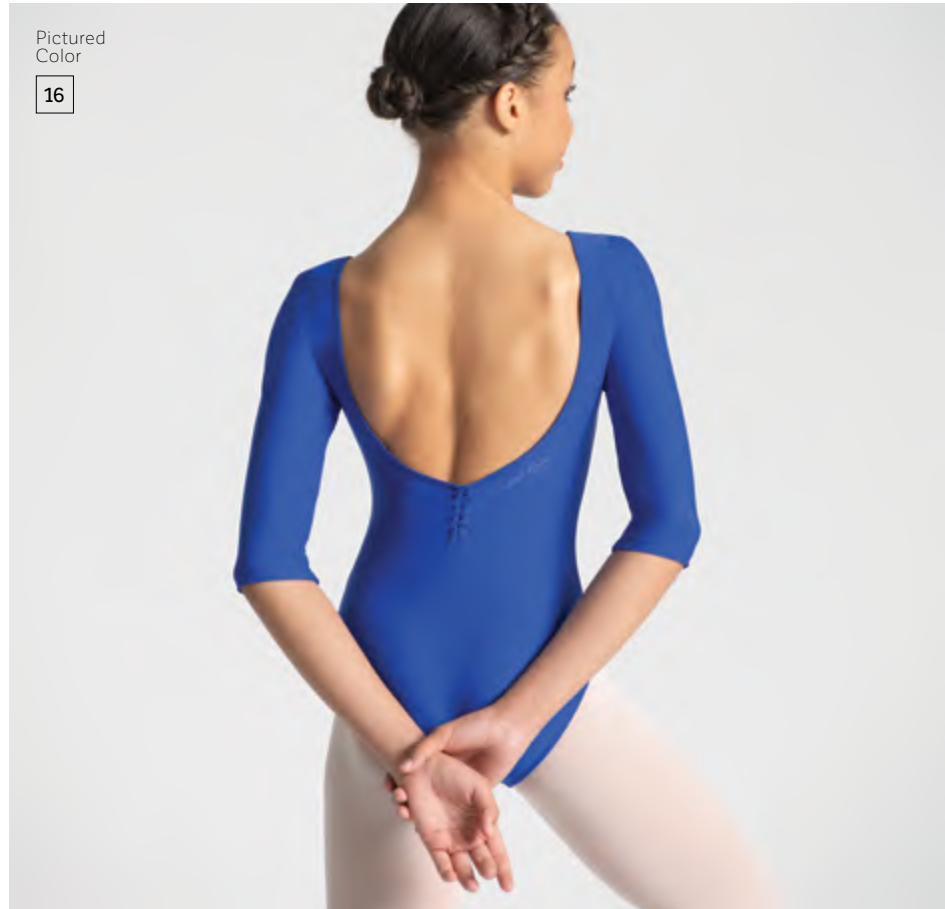
Pictured
Color

14



Pictured
Color

16



Binna

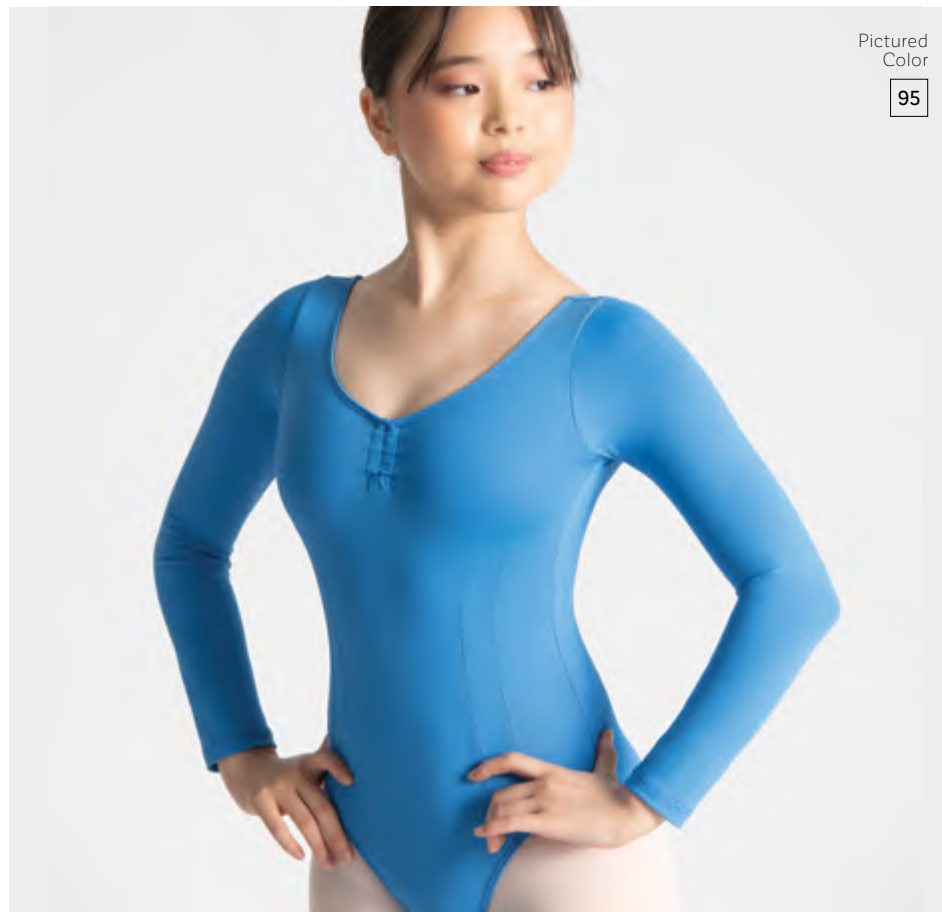
The femininity of 3/4 sleeves combines with double princess seams on the front to create a winning look. Dancers may choose to pinch both the front and/or back, thanks to adjustable ruche.

Jae

Jae takes the long sleeve leotard to new levels by adding fashionable detailing. The double princess seam lines of each side of the dancers' front add shaping and sophistication, while the adjustable front and back pinch allow the dancer to switch between scoop and V-shaped cut.

Pictured
Color

95



Pictured
Colors

96

104



Armel

Style meets comfort with a ruched front neckline and ruched back on the Armel long sleeve leotard, creating a flattering V-front and V-back.



Pictured
Color
82

Pictured
Color
08



Evelyn

Evelyn offers dancers a chance for full, long sleeve coverage with a scoop front and back. Fully front lined, a clean front, and ballet cut legline combine to create a sleek look that looks gorgeous on dancers young and old.



Pictured
Colors
93 94

Colas

Colas is the essential ankle length unitard for the modern mover. Features a flattering front and back center seam, comfortable round neckline, and round mid-back.

Pictured
Colors
01 72 105



Petra

This stylish ankle length long sleeve unitard offers a sporty high neck, zip front, and full back.

Pictured
Color
73





Skirts and Bottoms

Discover our complete range of bottoms, including skirts, shorts and leggings. To seamlessly coordinate your leotard and skirt ensemble, consult the color-matching chart on pages 144 and 145, guiding you through the array of hues available in both Chiffon and Stretch Mesh.

The Ballet Rosa bottoms collection offers a range of timeless cuts with waistbands that prioritize both comfort and support, accompanied by varying leg lengths to suit individual preferences or studio requirements. Available in all Matte Lycra and Microfiber colors, these shorts and leggings are a must for all dancers.

Skirts

See individual product pages for fabric and color information

Shorts and Leggings

Available in Microfiber and Matte Lycra
Please see pages 141 and 142 for color options

Pictured:
Harper wearing Bethanie skirts and Fauve leotards in Buttercup

Available in 26 colors / See page 144 for color matching options / Also available in Créateur



Marine **07**

Bordeaux **26**

Royal **16**

Ruby **82**

Parme **12**

Ciel **04**

Rose **03**

Blanc **02**

Pictured
Colors

86 90

Pictured with Halime leotards



Chiffon

Alyssa

This classic tulip front pull-on skirt is made of airy Chiffon and features a stretch waistband that sits smoothly over the waist. Skirt colors pair perfectly with any of our Italian Microfiber leotards. Choose from different lengths to achieve the perfect look.

Available in 10 colors / See page 141 for color options



Pictured
Color

38

Stretch Mesh

Bethanie

Bethanie is a classic pull-on mock wrap skirt, made of our gorgeous 4-way Stretch Mesh and featuring a stretch waistband and rolled hem. Choose from 26 beautiful colors to create the perfect look.

Available in 26 colors
See page 142 for color options



Pictured
Colors

03 15 94

Pictured leotards (left to right): Valerie · Opal · Fauve

Stretch Mesh

Tomomi

Tomomi creates a timeless silhouette in over 26 lively colors, bringing versatility to your dance wardrobe. This classic wrap skirt is made of airy Stretch Mesh, featuring a stretch waist band and a rolled hem.

Available in 26 colors
See page 142 for color options



Pictured leotards (left to right): Marlène · Jania · Enora · Cannelle · Grazia

Pictured Colors

- 26 107 95 08 89

Stretch Mesh

Stella

Stella is an elegant long wrap skirt made of gracefully flowing Stretch Mesh. The skirt cascades from high in the front to low in the back, bringing the dancer seamlessly from rehearsal to stage. Stella is available in over 26 vibrant colors and features a stretch waist band and rolled hem.

Available in 26 colors
See page 142 for color options

Pictured Colors

- 105 72

Pictured leotards (left to right): Elette · Sasha



Stretch Mesh

Faith

Add an extra depth of fluidity to your movement with the Faith pull-on skirt. This elegant skirt is mid-calf in length and made of flowing four-way Stretch Mesh with a stretch waistband, offering a secure yet comfortable fit.

Available in 26 colors
See page 142 for color options

Pictured
Color

01



Pictured with Luana leotard

Chiffon

Kumi

Kumi is an elegant Chiffon skirt with 3/4 length, emphasizing the grace of the dancer's flowing movement. The skirt is adjustable at the waist with a choice of two button closures and is perfect for performance or repertoire.

Available in 10 colors
See page 141 for color options



Pictured leotards (left to right): Gilliane · Elyane

Pictured
Colors

83 57

Interlock

Masako

Masako is the quintessential character skirt featuring an elastic waist band and made of flowy polyester interlock fabric. This piece is perfect on its own, or to add embellishment to fit your own style.

Pictured Color

01



Pictured with Maité leotard

Matte Lycra

Alix

Alix brings luxurious elegance to any movement and is as perfect for rehearsal as it is for stage. Alix is made of Matte Lycra and sits smoothly at the waist thanks to a comfortable stretch waistband.

Available in 19 colors
See page 142 for color options



Pictured Colors

01 19

Pictured with Jia leotards



Pictured with Babette leotard

Pictured Color
47

Featuring a wide, supportive waistband and moderate inseam, Pascale are the shorts every dancer needs. Crafted with a flattering seam detail for comfort and style, these shorts are a must-have.

Pascale



Pictured Colors
77 01 13

Pictured leotards (left to right): Kali · Azora · Babette



Malika

V-front booty shorts
Poppy **84**

Eloi

Unisex booty shorts
Gris **47**

Maxine

Thigh length bike shorts
Purple **80**

Maud

Knee length leggings
Marine **07**

Myléne

Calf length leggings
Teal **74**

Joris

Ankle length leggings
Snorkel Blue **83**

Dresses

Our dresses are a must-have for dancers and are perfect for class or stage. All dresses ensure ultimate comfort with a front lining and full seat coverage. Find your perfect dress code solution by choosing a style with either a Stretch Mesh or Chiffon attached skirt. For a comprehensive view of the available color options, refer to the chart on pages 144 and 145 and discover the perfect palette to complement your studio aesthetic.



Pictured:
Amelia wearing Romy dresses in Lagon



Stretch Mesh with
Microfiber or Matte Lycra

Romy

This dance dress for all ages features a short, rounded, attached skirt made of four-way Stretch Mesh. Romy stands out with a pinched seamless sweetheart neckline, tank straps, a scoop mid-back, elegant empire seam, and back seam detailing.

Available in Microfiber or Matte Lycra colors
See page 144 for color matching options

Stretch Mesh with
Microfiber or Matte Lycra

Cosette

Cosette features an attached, 4-way Stretch Mesh skirt, a ruched V-front, and rounded mid-back. Wear this beautiful ballet dress in class or as an elegant costume for stage.

Available in Microfiber or Matte Lycra colors
See page 144 for color matching options



Pictured
Colors

95 08 13

Pictured
Color

90



Chiffon with Microfiber

Cherine

Cherine is a sweet and simple classic, with attached Chiffon skirt and princess seams on the front. The tank straps, comfortable scoop neckline, and scoop mid-back make this dress perfect for even the youngest of dancers.

Available in Chiffon colors
See page 141 for color options

Pictured
Color

86



Pictured
Colors

02 03



Pictured
Color

12



Stretch Mesh with
Microfiber or Matte Lycra

Fini

Unveil the artistry of movement with Fini, our flutter sleeve dress featuring a high scoop back and V-front neckline created by a delicate pinch. Fini comes with an attached four-way Stretch Mesh skirt that is longer in the back for comfortable coverage.

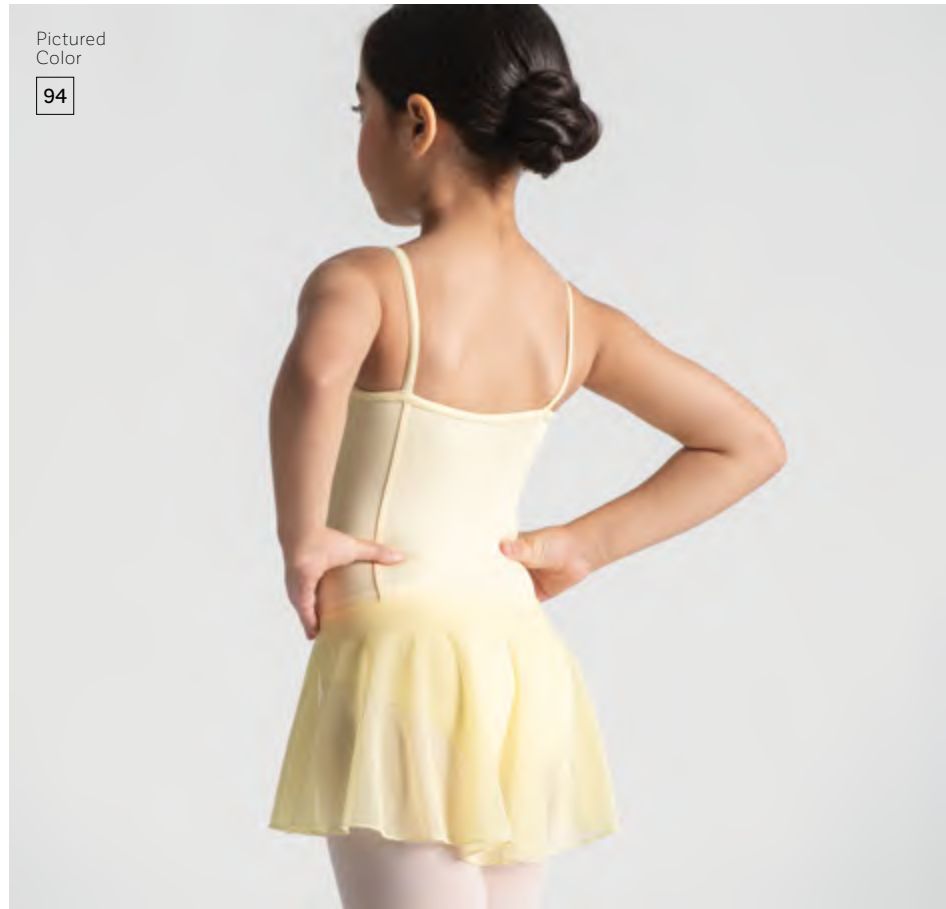
Available in Microfiber or Matte Lycra colors
See page 144 for color matching options

Stretch Mesh with
Microfiber or Matte Lycra

Colombe

This camisole leotard features an attached 4-way Stretch Mesh skirt to move with every turn. A round neckline, straight mid-back, and princess seams on the front and back, create a flattering and comfortable fit.

Available in Microfiber or Matte Lycra colors
See page 144 for color matching options



Pictured
Color
60

Stretch Mesh with
Microfiber or Matte Lycra

Sabrina

Sabrina is a young dancer's dream, with a comfortable rounded neckline, short sleeves, and high scoop back. Attached is a 4-way Stretch Mesh skirt that flows with every movement.

Available in Microfiber or Matte Lycra colors
See page 144 for color matching options





Pictured
Color
105

Stretch Mesh

Lolita

Our scoop front and back tank tunic dress is crafted from luxurious Stretch Mesh and is as perfect in the studio as a light coverup as it is on the stage as an elegant performance piece. This versatile pull-over dress offers a flattering silhouette created with an empire seam and front paneling to add movement and style.

Available in 26 colors
See page 142 for color options



Pictured
Colors
73 107 89 77 72

Warm-ups and Accessories

Our warm-up collection is designed to assist dancers achieve their training needs while creating a seamless transition from streetwear to classwear. The lightweight and wrinkle-free polar rib fabric not only ensures your muscles are primed for performance but also effortlessly accompanies you through your daily activities with confidence. For those seeking a matching look, our Josée style is available in the complete spectrum of Academy Matte Lycra and Microfiber colors, allowing you to match your warm-up attire with your leotard, and our Natasha style is available in all colors of Stretch Mesh.

Complete your Ballet Rosa ensemble with our range of accessories, featuring cozy legwarmers, regulation-style socks, waist belts, Italian-manufactured tights, and chic headbands and scrunchies. Finally, organize your valuables effortlessly in one of our stylish, versatile bags, ensuring both practicality and fashion accompany you wherever your dance journey takes you.



Pictured:
Margot and Trisha wearing
Leah headbands
Gaby legwarmers
Cibelle belts
Gloire tights
Maité leotards

Josée

This waist-length 3/4 sleeve wrap top is available in a wide range of colors to match or complement our Microfiber leotards. A small side opening allows the tie to wrap to the back without moving out of place.

Available in Microfiber or Matte Lycra
Please see pages 141 and 142 for color options

Pictured
Colors
07 82 84



Joia

This cropped, long sleeve wrap top is made from Ballet Rosa's wrinkle-free, moisture-wicking, cozy warm-up polar rib. A small side opening allows the tie to wrap to the back without moving out of place.

Available in 6 colors
See page 143 for color options

Pictured
Color
03



Pictured
Colors
42 01





Pictured
Colors

| | | |
|----|----|----|
| 26 | 01 | 42 |
|----|----|----|

Lucie

Lucie is your go-anywhere piece, as gorgeous in the studio over a leotard as it is after class on the street. This long sleeve crop shirt comes together with a front tie at the bust, making it the perfect warm-up essential.

Available in 6 colors
See page 143 for color options



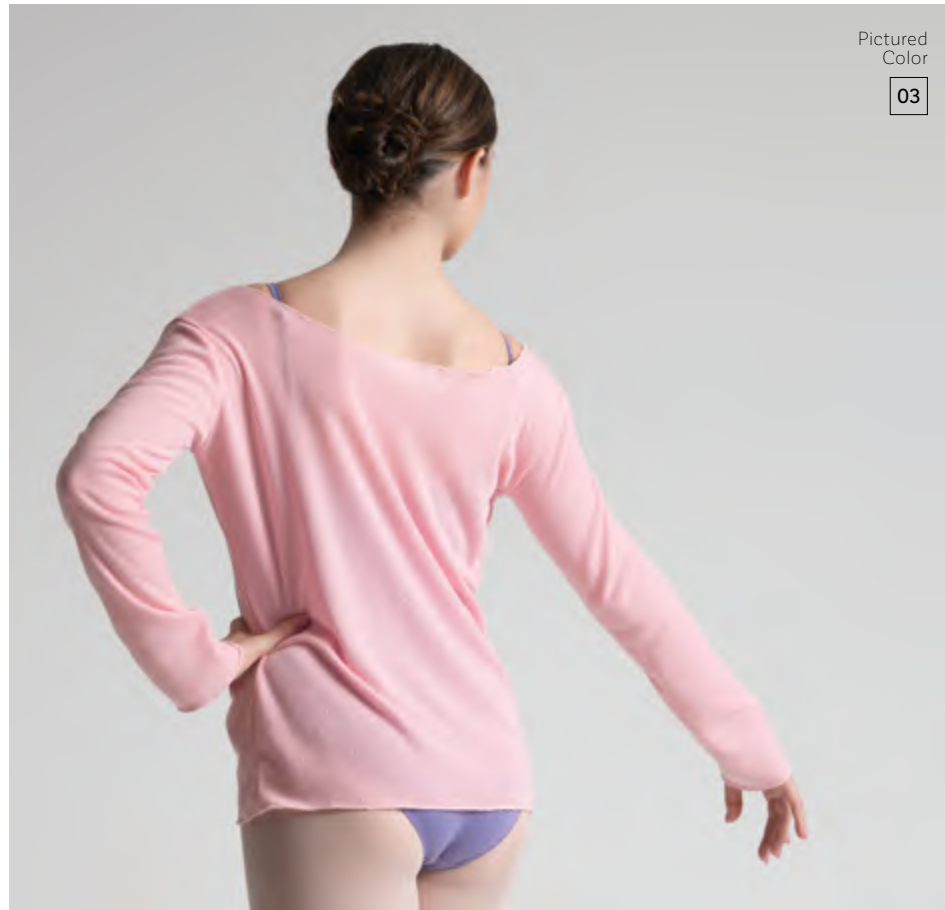
Pictured with Sasha leotard

Pictured
Color

| |
|----|
| 03 |
|----|



Pictured
Colors
02 07



Pictured
Color
03

Ruby

Ruby, our chic studio warm-up, will quickly become your favorite top inside and outside the studio. Made from our exclusive wrinkle-free, one sided fleece polar rib, this long sleeve boatneck top is a must have.

Available in 6 colors
See page 143 for color options



Olivine

The Olivine is a heavenly soft hoodie made of our wrinkle-free warm-up fabric. Featuring a high-low hem, a comfortable hood, and seamed thumb hole details on the sleeves, this versatile piece is as perfect in studio as it is on the street.

Available in 6 colors
See page 143 for color options

Pictured
Colors
01 26 42

Pictured
Colors

02 07 42

Bruni

Our Bruni drawstring shorts are perfect for keeping warm without sacrificing free movement. Made of our irresistibly soft warm-up fabric for lightweight comfort, these shorts will be your new favorite.

Available in 6 colors
See page 143 for color options



Pictured leotards (left to right): Enora · Gilliane · Zella

Lazuli

Made of Ballet Rosa's exclusive wrinkle-free warm-up fabric and featuring a broad waistband with drawstring, generous pockets, and slim cuffs at the ankle, Lazuli reflects a throw-on-and-go sensibility while maintaining contemporary sophistication.

Available in 6 colors
See page 143 for color options



Pictured leotards (left to right): Gilliane · Sasha · Enora

Pictured
Colors

03 26 01

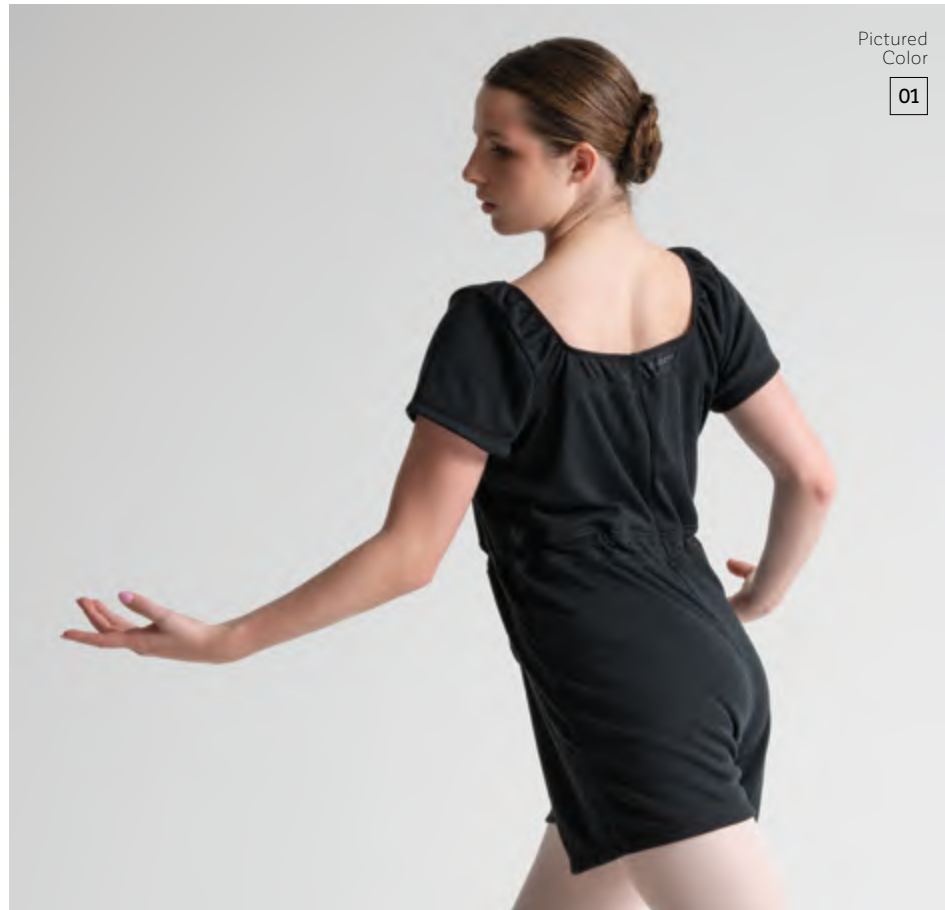


Pictured
Colors
42 07

Anice

This weightless warm-up romper is irresistibly soft and its drawstring waist provides a customized fit. Made of our exclusive, wrinkle-free, one sided fleece warm-up fabric, Anice can be worn as is or folded down into shorts; it's two looks in one!

Available in 6 colors
See page 143 for color options



Pictured
Color
01

Andrea

Warm up in style with the irresistibly soft Andrea full length romper. A drawstring waist and customizable drawstrings at the calf provide ultimate comfort and convenience.

Available in 6 colors
See page 143 for color options



Pictured
Color
03



Pictured
Color
26



Pictured Colors
47 60 82



Pictured with Jia leotard

Pictured Color
12

Stretch Mesh

Natasha

Available in 26 colors
See page 142 for color options

Featuring a wide boatneck and full-length sleeves, the stylish Natasha top is made of four-way Stretch Mesh for a comfortable, flattering fit. The Natasha top will pair perfectly with any outfit and is ideal for wear both inside and outside of the studio.



Pictured Colors
02 03

Gaby

Unforgettably soft, our Gaby ribbed stirrup leg warmers are a must-have for dancers young and old.

One size 51 cm · 20"
01 Noir · 02 Blanc · 03 Rose

* Belt sold separately · Page 133



Pictured Color
01

Pictured Opal leotard



Pictured Colors
02 03

Pictured leotards (left to right): Itzel · Azora

Lyna

Lyna stirrup leg warmers are super long, keeping every inch of the leg warm with our touchably soft acrylic knit material.

One size 86 cm · 33.9"
01 Noir · 02 Blanc · 03 Rose



Pictured Color
02

Pictured with Cannelle leotard



Convertible



Footed



Footless



| Size | Height | Weight |
|------------|--------------------------|----------------------------|
| S/M Child | 84 - 120 cm · 33" - 47" | 13 - 26 kg · 29 - 57 lbs |
| M/L Child | 109 - 158 cm · 43" - 62" | 24 - 45 kg · 53 - 99 lbs |
| S/M Adult | 155 - 170 cm · 61" - 67" | 45 - 60 kg · 95 - 132 lbs |
| L/XL Adult | 168 - 170 cm · 66" - 71" | 56 - 75 kg · 123 - 165 lbs |

87% Polyamide
 13% Elastane

60 DENIER

Made in Italy

Microfiber Tights

Gloire

Convertible · Footed · Footless

A soft, wide waistband provides comfort to our Gloire tights, available in Poudré in footless, footed, or convertible. Made in Italy with old-world craftsmanship, our 60 denier tights are so buttery soft you'll forget you're wearing anything.



Pictured Fauve leotard

Pictured Color

Cora

Cora 100% acrylic socks are made of a fine gauge and are breathable, allowing for maximum comfort. Available in four colors, these socks are perfect for exams.

01 Noir · 02 Blanc · 03 Rose · 30 Chair

| Size | EU | US & CAN | UK |
|------|-------|---------------------|---------------------|
| S | 25-29 | 9-11 ^{1/2} | 8-10 ^{1/2} |
| M | 30-34 | 12-2 ^{1/2} | 11-1 ^{1/2} |
| L | 35-38 | 4-8 ^{1/2} | 2-5 ^{1/2} |
| XL | 39-41 | 9-10 ^{1/2} | 6-8 ^{1/2} |



Cibelle

Our stretchy elastic belts are ideal for class uniforms, allowing for a clear view of the dancer's alignment. Belts are shiny on one side and match our Microfiber colors beautifully.



Pictured leotards (left to right): Armel · Rosalie

Pictured
Colors

89 07



Leah

Crafted for comfort and style, this one-size-fits-all headband is the perfect accessory to complement your uniform. The Leah is available in our full range of colors and features a ruche for added flair.

Available in Microfiber or Matte Lycra
Please see pages 141 and 142 for color options

Pictured with Grazia leotards

Pictured
Colors

96 86 03



Zoé

Our scrunchie is available in all Ballet Rosa hues to match every ensemble. With a comfortable one-size fit, Zoé adds a playful and polished touch as the perfect finishing detail for every class or performance.

Available in Microfiber or Matte Lycra
Please see pages 141 and 142 for color options

Pictured with Melodie leotards



Pictured with Melodie leotard

Glissade 15100

Pictured Colors

03 01

The wide open interior of Glissade is perfect for the dancer on the go with a lot to carry. The large zippered outer compartment is useful for storing shoes or other accessories needing easy access. An adjustable side strap and durable shoulder straps allow for the bag to be carried in multiple ways.

W44cm · H25cm · D24cm
W17.3" · H9.8" · D9.4"



Penché 15116

Pictured Color

01

This small, lightweight dance duffel has a spacious enough interior to accommodate more than it would seem. Crafted from a soft canvas and accented with rose gold zippers and a golden Ballet Rosa logo, Penché is designed with an interior and exterior pocket for added organization.

W34.5cm · H28cm · D18.5cm
W13.6" · H11" · D7.3"



Pictured with Melodie leotard

Battement 15115

Pictured
Color

Heather Pink 91

This stylish, lightweight backpack is equipped with a multitude of smart interior and exterior organizational pockets - including several mesh pockets. While compact, it's still roomy enough for all of your dance essentials, and keeps it all together with a zip top. Personalize your bag with our removable dance-themed velcro patches (4 included).

W35cm · H40cm · D15cm
W13.8" · H15.7" · D5.9"



Cabriole 15118

Pictured
Colors

Noir 01

Heather Purple 111

Heather Grey 110

Sleek and lightweight, this chic backpack makes easy work of protecting your dance essentials, with several mesh pockets to allow your shoes and dancewear to breathe. The zip top opens to a surprisingly roomy interior, and the exterior also provides ample opportunities for storage and organization.

W35cm · H40cm · D15cm
W13.8" · H15.7" · D5.9"

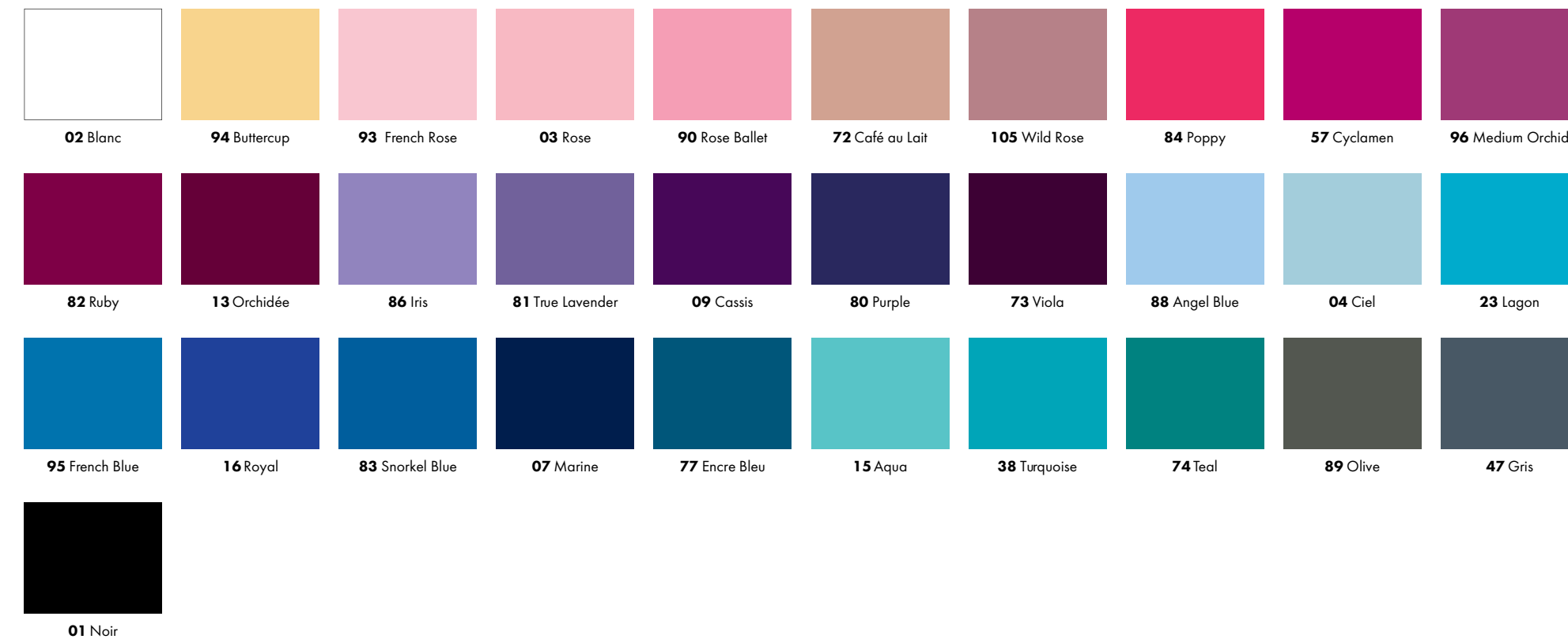


Introducing our Color Guide

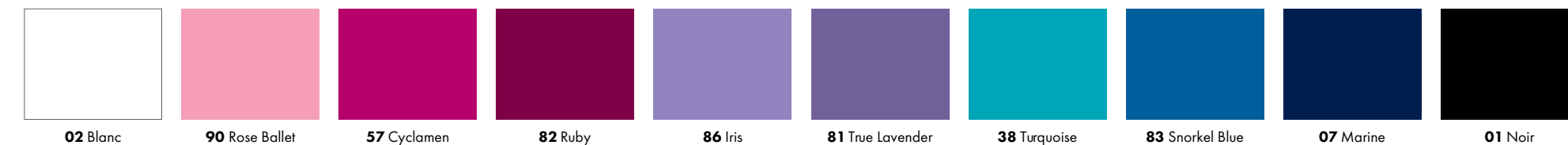
Explore the possibilities of color with confidence, empowered by our Color Guide.

Our Color Guide has been created with the retailer in mind, as a tool to assist their customers in choosing a personalized and attractive studio dress code. Discover how fabrics like Stretch Mesh, Chiffon, and waist belts complement base materials like Microfiber and Matte Lycra, each adding its character to the palette.

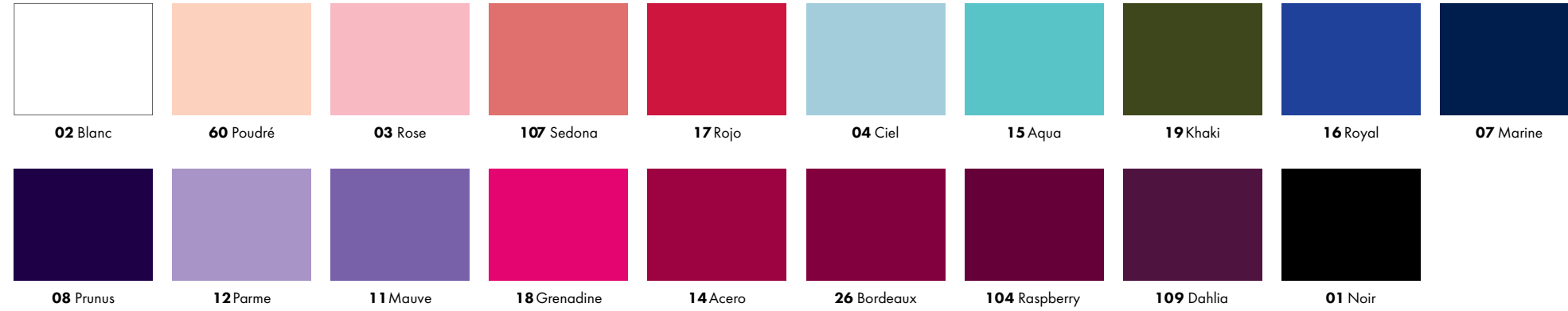
Microfiber Colors



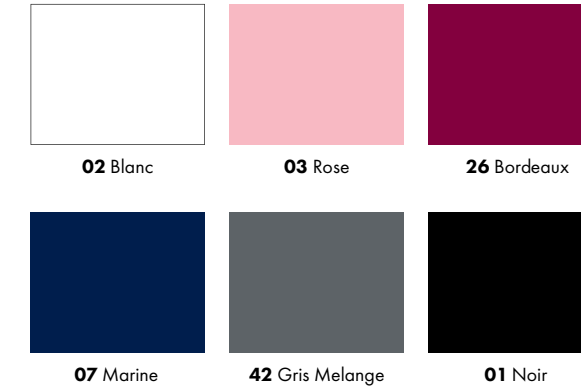
Chiffon Colors



Matte Lycra Colors



Warm-up Colors



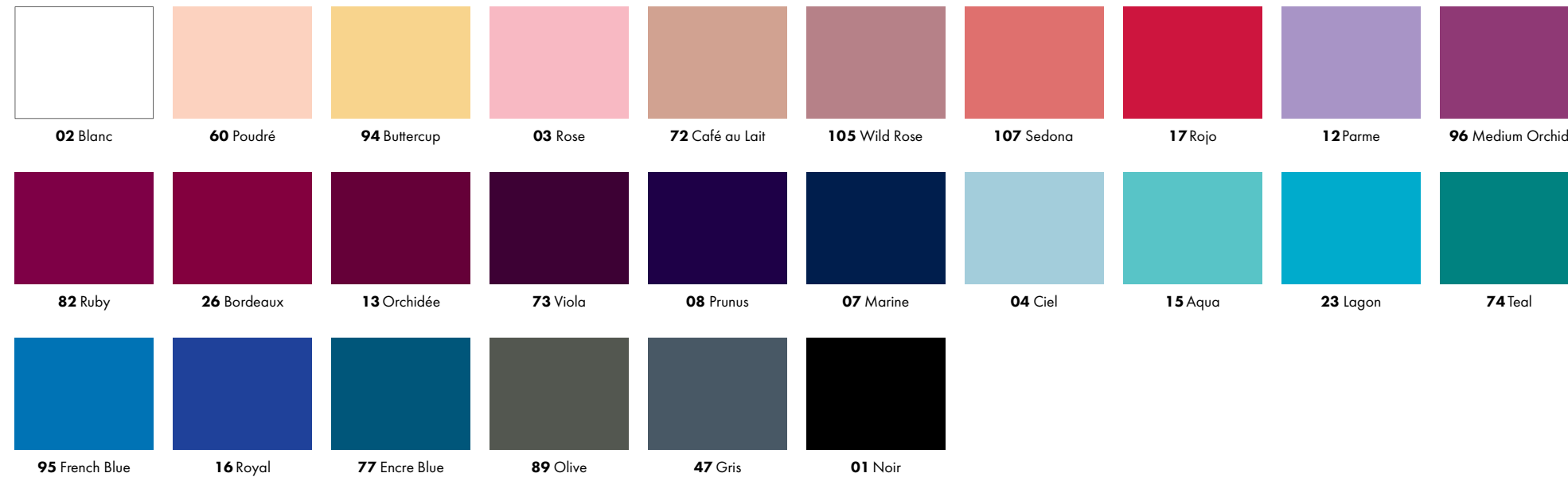
Tencel™



Interlock



Stretch Mesh Colors



 Color references are merely informative. Colors may vary slightly depending on material and dyeing batch.

Wash and Special Care

Garments made with Chiffon or Stretch Mesh should be handled with extra care.

Hand wash in cold water · Use mild detergent
Do not iron · Do not tumble dry · Allow to dry flat

The brand will not be held liable for any damages caused by excessive or inappropriate usage. Keeping your Ballet Rosa products in good shape depends solely upon your care. Each material has different quality standards. Please respect the wash care labels and the care instructions stated below.

Intense sweating combined with the high temperature of the body over long periods could have negative effects and cause discoloration.

Washing Instructions by Material

| MATERIAL | COMPOSITION | INSTRUCTIONS |
|--------------|------------------------------|---|
| Matte Lycra | 80% Polyamide · 20% Elastane |      |
| Microfiber | 90% Polyamide · 10% Elastane |      |
| Stretch Mesh | 94% Polyamide · 6% Elastane |      |
| Warm-Up | 100% Polyester |      |
| Chiffon | 100% Polyester |      |
| Interlock | 100% Polyester |      |
| Tencel™ | 93% Lyocell · 7% Elastane |      |

Stretch Mesh color matching guide

Our soft four-way Stretch Mesh is made in Spain and comes in an impressive range of 26 gorgeous colors



Please note: the following colors do not have a matching or coordinating Stretch Mesh material available

- Microfiber Colors**
- 90 Rose Ballet
- 84 Poppy
- 57 Cyclamen
- 38 Turquoise
- 83 Snorkel Blue
- 86 Iris
- 81 True Lavender
- 09 Cassis
- Matte Lycra Colors**
- 18 Grenadine
- 14 Acero
- 19 Khaki
- 11 Mauve
- 109 Dahlia

* Skylar Stretch Mesh skirts are made with a wide fabric waistband for extra comfort. The fabric waistband will be made of Microfiber or Matte Lycra, depending on the color. If a Stretch Mesh color has both a Microfiber and Matte Lycra color to match, the skirt will be produced with a Microfiber waistband.

Coordinating Color

Colors indicated are not an exact match for Stretch Mesh but are acceptable coordinating colors.

| Stretch Mesh Colors | Matching Microfiber Color | Matching Matte Lycra Color |
|---------------------|---------------------------|----------------------------|
| 01 Noir | ✓ | ✓ |
| 02 Blanc | ✓ | ✓ |
| 03 Rose | ✓ / 93 French Rose | ✓ |
| 04 Ciel | ✓ / 88 Angel Blue | ✓ |
| 07 Marine | ✓ | ✓ |
| 08 Prunus | 80 Purple | ✓ |
| 12 Parme | ✓ | ✓ |
| 13 Orchidée | ✓ | 104 Raspberry |
| 15 Aqua | ✓ | ✓ |
| 16 Royal | ✓ | ✓ |
| 17 Rojo | ✗ | ✓ |
| 23 Lagon | ✓ | ✗ |
| 26 Bordeaux | ✗ | ✓ |

| Stretch Mesh Colors | Matching Microfiber Color | Matching Matte Lycra Color |
|---------------------|---------------------------|----------------------------|
| 47 Gris | ✓ | ✗ |
| 60 Poudré | ✗ | ✓ |
| 72 Café au Lait | ✓ | ✗ |
| 73 Viola | ✓ | ✗ |
| 74 Teal | ✓ | ✗ |
| 77 Encre Bleu | ✓ | ✗ |
| 82 Ruby | ✓ | ✗ |
| 89 Olive | ✓ | ✗ |
| 94 Buttercup | ✓ | ✗ |
| 95 French Blue | ✓ | ✗ |
| 96 Medium Orchid | ✓ | ✗ |
| 105 Wild Rose | ✓ | ✗ |
| 107 Sedona | ✗ | ✓ |

Chiffon color matching guide

Our high quality Chiffon is made in Portugal and adds a sweet and delicate touch to any dress code



Please note: all Microfiber and Matte Lycra colors not included in the chart do not have a matching or coordinating Chiffon material available.

| Stretch Mesh Colors | Matching Microfiber Color | Matching Matte Lycra Color |
|---------------------|---------------------------|----------------------------|
| 01 Noir | ✓ | ✓ |
| 02 Blanc | ✓ | ✓ |
| 07 Marine | ✓ | ✓ |
| 38 Turquoise | ✓ | ✗ |
| 57 Cyclamen | ✓ | ✗ |
| 81 True Lavender | ✓ | ✗ |
| 82 Ruby | ✓ | ✗ |
| 83 Snorkel Blue | ✓ | ✗ |
| 86 Iris | ✓ | ✗ |
| 90 Rose Ballet | ✓ | ✗ |

Waist Elastic Belt color matching guide

Made in Portugal, our soft, satiny waist elastic belts are perfect for regulation uniforms



Cibelle
P.133

Please note: all Microfiber and Matte Lycra colors not included in the chart do not have a matching or coordinating belt.

| Stretch Mesh Colors | Matching Microfiber Color | Matching Matte Lycra Color |
|---------------------|---------------------------|----------------------------|
| 01 Noir | ✓ | ✓ |
| 02 Blanc | ✓ | ✓ |
| 07 Marine | ✓ | ✓ |
| 38 Turquoise | ✓ | ✗ |
| 57 Cyclamen | ✓ | ✗ |
| 74 Teal | ✓ | ✗ |
| 80 Purple | ✓ | ✗ |
| 82 Ruby | ✓ | ✗ |
| 83 Snorkel Blue | ✓ | ✗ |
| 84 Poppy | ✓ | ✗ |
| 86 Iris | ✓ | ✗ |
| 88 Angel Blue | ✓ | ✗ |
| 90 Rose Ballet | ✓ | ✗ |



Boys' and Men's Academy Basics

Available in the Ballet Rosa
HOMME Catalog

Ensure a cohesive dress code by exploring our HOMME catalog for boys' and men's dancewear. Within the HOMME catalog, discover a range of Academy styles tailored for male dancers, each available for special order in any of our 50 hues featured here. This flexibility allows dance studios to harmonize their attire, creating a unified and polished look for all students.




Available in (color page)


ALIX
See page 155 for sizes
P.95
 **Modern Classics > Skirts and Bottoms**
Long Skirt
Matte Lycra (P.142)

ALODIA
4 > 12
36 > 44
P.61
 **Modern Classics > Basic Leotards**
Camisole Leotard with Adjustable Ruche
Microfiber (P.141)
Matte Lycra (P.142)
Tencel (Noir)

ALYSSA
See page 155 for sizes
P.88
 **Modern Classics > Skirts and Bottoms**
Wrap Skirt
Chiffon (P.141)


ANAYA
4 > 12
36 > 44
P.70
 **Modern Classics > Basic Leotards**
Princess Seam Camisole Leotard
Microfiber (P.141)
Matte Lycra (P.142)
Tencel (Noir)

ANDREA
8 > 12
36 > 44
P.123
 **Modern Classics > Warm-ups and Accessories**
Full Length Romper
Warm-up (P.143)

ANICE
8 > 12
36 > 44
P.122
 **Modern Classics > Warm-ups and Accessories**
Short Sleeve Romper
Warm-up (P.143)


ARMEL
4 > 12
36 > 44
P.80
 **Modern Classics > Basic Leotards**
Ruched Front and Back Long Sleeve Leotard
Microfiber (P.141)
Matte Lycra (P.142)
Tencel (Noir)


ARYA
4 > 12
36 > 44
P.41
 **Modern Classics > Basic Leotards**
Pinch Front Princess Seam Wide Strap Leotard
Microfiber (P.141)
Matte Lycra (P.142)
Tencel (Noir)


AUBE
4 > 12
36 > 44
P.71
 **Modern Classics > Basic Leotards**
Front and Back Princess Seam Camisole Leotard
Microfiber (P.141)
Matte Lycra (P.142)
Tencel (Noir)

AZORA
8 > 12
36 > 44
P.31
 **Aspire Collection > Maya Legline**
Half Sleeve Leotard
Microfiber (P.141)
Matte Lycra (P.142)


Available in (color page)


BABETTE
4 > 12
36 > 44
P.42
 **Modern Classics > Basic Leotards**
Pinch Front Round Back Tank Leotard
Microfiber (P.141)
Matte Lycra (P.142)
Tencel (Noir)

BÉATRICE
4 > 12
36 > 44
P.72
 **Modern Classics > Basic Leotards**
Cap Sleeve Pinch Front and Back Leotard
Microfiber (P.141)
Matte Lycra (P.142)
Tencel (Noir)


BELLE
4 > 12
36 > 44
P.47
 **Modern Classics > Basic Leotards**
Boatneck Tank Leotard
Microfiber (P.141)
Matte Lycra (P.142)
Tencel (Noir)

BETHANIE
See page 155 for sizes
P.89
 **Modern Classics > Skirts and Bottoms**
Pull On Mock Wrap Skirt
Stretch Mesh (P.142)


BINNA
4 > 12
36 > 44
P.78
 **Modern Classics > Basic Leotards**
Adjustable Ruche Double Princess Seam 3/4 Sleeve Leotard
Microfiber (P.141)
Matte Lycra (P.142)
Tencel (Noir)

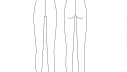
BRUNI
4 > 12
36 > 44
P.120
 **Modern Classics > Warm-ups and Accessories**
Drawstring Shorts
Warm-up (P.143)

CANDICE
4 > 12
36 > 44
P.66
 **Modern Classics > Basic Leotards**
Camisole Leotard
Microfiber (P.141)
Matte Lycra (P.142)
Tencel (Noir)


CANNELLE
8 > 12
36 > 44
P.19
 **Aspire Collection > Margot Legline**
Pinch Front and Back Princess Seam Tank Leotard
Microfiber (P.141)
Matte Lycra (P.142)


CAPUCINE
4 > 12
36 > 44
P.58
 **Modern Classics > Basic Leotards**
Pinch Front Camisole Leotard
Microfiber (P.141)
Matte Lycra (P.142)
Tencel (Noir)

CHERINE
4 > 12
36 > 44
P.105
 **Modern Classics > Dresses**
Princess Seam Tank Dress
Chiffon with Microfiber (P.141)


COLAS
4 > 12
36 > 44
P.82
 **Modern Classics > Unitards**
Round Neck Tank Unitard
Microfiber (P.141)
Matte Lycra (P.142)
Tencel (Noir)

Available in (color page)


COLOMBE
4 > 12
36 > 44
P.108
 **Modern Classics > Dresses**
Princess Seam Camisole Dress
Stretch Mesh with Microfiber or Matte Lycra (P.144)


COSETTE
4 > 12
36 > 44
P.104
 **Modern Classics > Dresses**
Ruche Front Tank Dress
Stretch Mesh with Microfiber or Matte Lycra (P.144)

DARIE
8 > 12
36 > 44
P.28
 **Aspire Collection > Maya Legline**
Boatneck Tank Leotard
Microfiber (P.141)
Matte Lycra (P.142)


DELPHINE
4 > 12
36 > 44
P.44
 **Modern Classics > Basic Leotards**
Square Front Pinch Back Tank Leotard
Microfiber (P.141)
Matte Lycra (P.142)
Tencel (Noir)

DORAH
4 > 12
36 > 44
P.48
 **Modern Classics > Basic Leotards**
Adjustable Ruche Front and Back Double Princess Seam Tank Leotard
Microfiber (P.141)
Matte Lycra (P.142)
Tencel (Noir)


ELIETTE
8 > 12
36 > 44
P.29
 **Aspire Collection > Maya Legline**
V-Front Camisole Leotard
Microfiber (P.141)
Matte Lycra (P.142)

ELOI
4 > 12
36 > 44
P.98
 **Modern Classics > Skirts and Bottoms**
Unisex Booty Shorts
Microfiber (P.141)
Matte Lycra (P.142)

ELYANE
4 > 12
36 > 44
P.45
 **Modern Classics > Basic Leotards**
Center Seam Twist Front Tank Leotard
Microfiber (P.141)
Matte Lycra (P.142)
Tencel (Noir)


ENORA
4 > 12
36 > 44
P.39
 **Modern Classics > Basic Leotards**
Pinch Front Sweetheart Neckline Tank
Microfiber (P.141)
Matte Lycra (P.142)
Tencel (Noir)

EVELYN
4 > 12
36 > 44
P.81
 **Modern Classics > Basic Leotards**
Scoop Front Long Sleeve Leotard
Microfiber (P.141)
Matte Lycra (P.142)
Tencel (Noir)

FAITH
See page 154 for sizes
P.92
 **Modern Classics > Skirts and Bottoms**
Pull On Long Skirt
Stretch Mesh (P.142)

Available in (color page)


FAUVE
8 > 12
36 > 44
P.30
 **Aspire Collection > Maya Legline**
Cap Sleeve Leotard
Microfiber (P.141)
Matte Lycra (P.142)


FINI
4 > 12
36 > 44
P.107
 **Modern Classics > Dresses**
Flutter Sleeve Pinch Front Dress
Stretch Mesh with Microfiber or Matte Lycra (P.144)


FRIDA
4 > 12
36 > 44
P.75
 **Modern Classics > Basic Leotards**
Cap Sleeve Pinch Back Leotard
Microfiber (P.141)
Matte Lycra (P.142)
Tencel (Noir)


GILLIANE
4 > 12
36 > 44
P.69
 **Modern Classics > Basic Leotards**
Camisole Leotard
Microfiber (P.141)
Matte Lycra (P.142)
Tencel (Noir)

GRAZIA
4 > 12
36 > 44
P.62
 **Modern Classics > Basic Leotards**
Front Gather Princess Seam Camisole Leotard Removable Bust Padding in 36 > 44
Microfiber (P.141)
Matte Lycra (P.142)
Tencel (Noir)

HALINE
4 > 12
36 > 44
P.74
 **Modern Classics > Basic Leotards**
Short Sleeve Leotard
Microfiber (P.141)
Matte Lycra (P.142)
Tencel (Noir)


ISLA
4 > 12
36 > 44
P.51
 **Modern Classics > Basic Leotards**
Adjustable Ruche Princess Seam Tank Leotard
Microfiber (P.141)
Matte Lycra (P.142)
Tencel (Noir)


ITZEL
8 > 12
36 > 44
P.18
 **Aspire Collection > Margot Legline**
Cap Sleeve Pinch Front and Back Princess Seam Leotard
Microfiber (P.141)
Matte Lycra (P.142)

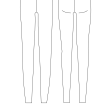
JAE
4 > 12
36 > 44
P.79
 **Modern Classics > Basic Leotards**
Adjustable Ruche Double Princess Seam Long Sleeve Leotard
Microfiber (P.141)
Matte Lycra (P.142)
Tencel (Noir)


JANIA
8 > 12
36 > 44
P.17
 **Aspire Collection > Margot Legline**
Twisted Ruche Princess Seam Camisole Leotard
Microfiber (P.141)
Matte Lycra (P.142)


Available in (color page)


| | | | |
|--|---|--|--|
| JIA 4 > 12 36 > 44 P.59 |  | Modern Classics > Basic Leotards Adjustable Ruche Double Princess Seam Camisole Leotard | Microfiber (P.141) Matte Lycra (P.142) Tencel (Noir) |
|--|---|--|--|

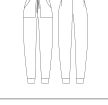
| | | | |
|--|---|--|-----------------|
| JOIA 4 > 12 36 > 44 P.115 |  | Modern Classics > Warm-ups and Accessories Cropped Long Sleeve Wrap Top | Warm-up (P.143) |
|--|---|--|-----------------|

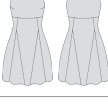
| | | | |
|--|---|---|---|
| JORIS 4 > 12 36 > 44 P.99 |  | Modern Classics > Skirts and Bottoms Ankle Length Leggings | Microfiber (P.141) Matte Lycra (P.142) |
|--|---|---|---|

| | | | |
|---|---|---|---|
| JOSÉE 4 > 12 36 > 44 P.114 |  | Modern Classics > Warm-ups and Accessories 3/4 Sleeve Wrap Top | Microfiber (P.141) Matte Lycra (P.142) |
|---|---|---|---|

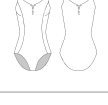
| | | | |
|---|---|--|---|
| KALI 8 > 12 36 > 44 P.22 |  | Aspire Collection > Polina Legline Princess Seam Camisole Leotard | Microfiber (P.141) Matte Lycra (P.142) |
|---|---|--|---|

| | | | |
|---|---|--|-----------------|
| KUMI See page 155 for sizes P.93 |  | Modern Classics > Skirts and Bottoms 3/4 Length Skirt | Chiffon (P.141) |
|---|---|--|-----------------|


| | | | |
|--|---|--|-----------------|
| LAZULI 4 > 12 36 > 44 P.121 |  | Modern Classics > Warm-ups and Accessories Side Pocket Drawstring Pants | Warm-up (P.143) |
|--|---|--|-----------------|


| | | | |
|--|---|--|----------------------|
| LOLITA 6 > 12 36 > 44 P.110 |  | Modern Classics > Dresses Panelled Tank Tunic Dress | Stretch Mesh (P.142) |
|--|---|--|----------------------|


| | | | |
|--|---|---|---|
| LOVETTE 8 > 12 36 > 44 P.16 |  | Aspire Collection > Margot Legline Empire Seam Pinch Back Camisole Leotard | Microfiber (P.141) Matte Lycra (P.142) |
|--|---|---|---|


| | | | |
|--|---|--|--|
| LUANA 4 > 12 36 > 44 P.50 |  | Modern Classics > Basic Leotards Adjustable Ruche Double Strap Tank Leotard | Microfiber (P.141) Matte Lycra (P.142) Tencel (Noir) |
|--|---|--|--|


Available in (color page)


| | | | |
|---|---|--|-----------------|
| LUCIE 4 > 12 36 > 44 P.117 |  | Modern Classics > Warm-ups and Accessories Front Tie Long Sleeve Crop Shirt | Warm-up (P.143) |
|---|---|--|-----------------|


| | | | |
|---|---|---|--|
| MATÉ 4 > 12 36 > 44 P.46 |  | Modern Classics > Basic Leotards Scoop Front and Back Tank Leotard | Microfiber (P.141) Matte Lycra (P.142) Tencel (Noir) |
|---|---|---|--|


| | | | |
|---|---|---|---|
| MALIKA 4 > 12 36 > 44 P.98 |  | Modern Classics > Skirts and Bottoms V-Front Booty Short | Microfiber (P.141) Matte Lycra (P.142) |
|---|---|---|---|


| | | | |
|--|---|--|--|
| MARLÉNE 8 > 12 36 > 44 P.53 |  | Modern Classics > Basic Leotards High Neck Front and Back Teardrop Tank Leotard | Microfiber (P.141) Matte Lycra (P.142) Tencel (Noir) |
|--|---|--|--|

| | | | |
|---|---|--|------------------|
| MASAKO See page 155 for sizes P.94 |  | Modern Classics > Skirts and Bottoms 3/4 Length Character Skirt | Interlock (Noir) |
|---|---|--|------------------|


| | | | |
|---|---|--|---|
| MAUD 4 > 12 36 > 44 P.99 |  | Modern Classics > Skirts and Bottoms Knee Length Leggings | Microfiber (P.141) Matte Lycra (P.142) |
|---|---|--|---|

| | | | |
|---|---|--|---|
| MAXINE 4 > 12 36 > 44 P.98 |  | Modern Classics > Skirts and Bottoms Thigh Length Bike Shorts | Microfiber (P.141) Matte Lycra (P.142) |
|---|---|--|---|

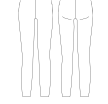
| | | | |
|--|---|---|--|
| MEGAN 4 > 12 36 > 44 P.36 |  | Modern Classics > Basic Leotards Wide Strap Empire Seam Tank Leotard | Microfiber (P.141) Matte Lycra (P.142) Tencel (Noir) |
|--|---|---|--|

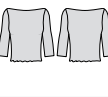
| | | | |
|--|---|--|--|
| MELODIE 4 > 12 36 > 44 P.76 |  | Modern Classics > Basic Leotards Flutter Sleeve Pinch Front Leotard | Microfiber (P.141) Matte Lycra (P.142) Tencel (Noir) |
|--|---|--|--|


| | | | |
|---|---|---|--|
| MICHELLE 4 > 12 36 > 44 P.54 |  | Modern Classics > Basic Leotards Scoop Front Strappy Back Camisole Leotard | Microfiber (P.141) Matte Lycra (P.142) Tencel (Noir) |
|---|---|---|--|

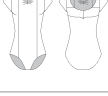
| | | | |
|---|---|---|--|
| MONICA 4 > 12 36 > 44 P.37 |  | Modern Classics > Basic Leotards Wide Strap Empire Seam V-Back Leotard | Microfiber (P.141) Matte Lycra (P.142) Tencel (Noir) |
|---|---|---|--|

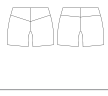
Available in (color page)

| | | | |
|---|---|--|---|
| MYLÈNE 4 > 12 36 > 44 P.99 |  | Modern Classics > Skirts and Bottoms Calf Length Leggings | Microfiber (P.141) Matte Lycra (P.142) |
|---|---|--|---|

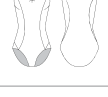
| | | | |
|---|---|---|----------------------|
| NATASHA 4 > 12 36 > 44 P.125 |  | Modern Classics > Warm-ups and Accessories Long Sleeve Shirt | Stretch Mesh (P.142) |
|---|---|---|----------------------|

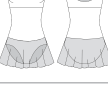
| | | | |
|---|---|---|-----------------|
| OLIVINE 8 > 12 36 > 44 P.119 |  | Modern Classics > Warm-ups and Accessories Hoodie with Thumb Holes | Warm-up (P.143) |
|---|---|---|-----------------|


| | | | |
|---|---|--|---|
| OPAL 8 > 12 36 > 44 P.13 |  | Aspire Collection > Allegra Legline Pinch Front Princess Seam Adjustable Legline Cap Sleeve Leotard | Microfiber (P.141) Matte Lycra (P.142) |
|---|---|--|---|

| | | | |
|--|---|---|---|
| PASCALE 4 > 12 36 > 44 P.96 |  | Modern Classics > Skirts and Bottoms Wide Waistband Shorts | Microfiber (P.141) Matte Lycra (P.142) |
|--|---|---|---|

| | | | |
|--|---|---|--|
| PETRA 4 > 12 36 > 44 P.83 |  | Modern Classics > Unitards High Neck Zip Front Unitard | Microfiber (P.141) Matte Lycra (P.142) Tencel (Noir) |
|--|---|---|--|

| | | | |
|---|---|--|---|
| RIVA 8 > 12 36 > 44 P.25 |  | Aspire Collection > Polina Legline Swirl Ruche Princess Seam Tank Leotard | Microfiber (P.141) Matte Lycra (P.142) |
|---|---|--|---|


| | | | |
|--|---|---|---|
| ROMY 4 > 12 36 > 44 P.103 |  | Modern Classics > Dresses Pinch Front Sweetheart Neckline Tank Dress | Stretch Mesh with Microfiber or Matte Lycra (P.144) |
|--|---|---|---|

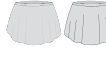
| | | | |
|--|---|---|--|
| ROSALIE 4 > 12 36 > 44 P.64 |  | Modern Classics > Basic Leotards Adjustable Straps Round Neckline Camisole Leotard | Microfiber (P.141) Matte Lycra (P.142) Tencel (Noir) |
|--|---|---|--|


| | | | |
|--|---|--|-----------------|
| RUBY 4 > 12 36 > 44 P.118 |  | Modern Classics > Warm-ups and Accessories Long Sleeve Boatneck Shirt | Warm-up (P.143) |
|--|---|--|-----------------|


| | | | |
|---|---|---|---|
| SABRINA 4 > 12 36 > 44 P.109 |  | Modern Classics > Dresses Short Sleeve Dress | Stretch Mesh with Microfiber or Matte Lycra (P.144) |
|---|---|---|---|

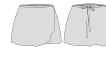
Available in (color page)


| | | | |
|--|---|--|---|
| SASHA 8 > 12 36 > 44 P.12 |  | Aspire Collection > Allegra Legline Pinch Front Adjustable Legline Tank Leotard | Microfiber (P.141) Matte Lycra (P.142) |
|--|---|--|---|


| | | | |
|---|---|---|---|
| SKYLAR See page 155 for sizes P.86 |  | Modern Classics > Skirts and Bottoms Pull On Skirt | Stretch Mesh with Microfiber or Matte Lycra (P.144) |
|---|---|---|---|

| | | | |
|---|---|---|----------------------|
| STELLA See page 154 for sizes P.91 |  | Modern Classics > Skirts and Bottoms High Low Wrap Skirt | Stretch Mesh (P.142) |
|---|---|---|----------------------|

| | | | |
|--|---|---|--|
| SUZETTE 4 > 12 36 > 44 P.57 |  | Modern Classics > Basic Leotards Scoop Front Strappy Back Empire Seam Camisole Leotard | Microfiber (P.141) Matte Lycra (P.142) Tencel (Noir) |
|--|---|---|--|

| | | | |
|---|---|--|----------------------|
| TOMOMI See page 154 for sizes P.90 |  | Modern Classics > Skirts and Bottoms Short Wrap Skirt | Stretch Mesh (P.142) |
|---|---|--|----------------------|

| | | | |
|---|---|--|---|
| TORI 8 > 12 36 > 44 P.24 |  | Aspire Collection > Polina Legline Short Sleeve Princess Seam Leotard | Microfiber (P.141) Matte Lycra (P.142) |
|---|---|--|---|

| | | | |
|--|---|--|--|
| VALÉRIE 4 > 12 36 > 44 P.67 |  | Modern Classics > Basic Leotards Camisole Leotard | Microfiber (P.141) Matte Lycra (P.142) Tencel (Noir) |
|--|---|--|--|


| | | | |
|---|---|--|---|
| VERONA 8 > 12 36 > 44 P.10 |  | Aspire Collection > Allegra Legline Pinch Front Princess Seam Adjustable Legline and Camisole Strap Leotard | Microfiber (P.141) Matte Lycra (P.142) |
|---|---|--|---|


| | | | |
|--|---|---|--|
| YOLANDA 4 > 12 36 > 44 P.43 |  | Modern Classics > Basic Leotards Pinch Front and Back Tank Leotard | Microfiber (P.141) Matte Lycra (P.142) Tencel (Noir) |
|--|---|---|--|


| | | | |
|--|---|--|--|
| ZELLA 4 > 12 36 > 44 P.60 |  | Modern Classics > Basic Leotards Adjustable Ruche Double Strap Camisole Leotard | Microfiber (P.141) Matte Lycra (P.142) Tencel (Noir) |
|--|---|--|--|


Accessories


| | | | | | |
|---|---|---|--------------|----------------|-----------------|
| CIBELLE See page 154 for sizes P.135 |  | Modern Classics > Warm-ups and Accessories Waist Elastic Belt Polyamide Lycra | Noir 01 | Cyclamen 57 | Snorkel Blue 83 |
| | | | Blanc 02 | Teal 74 | Poppy 84 |
| | | | Marine 07 | Purple 80 | Iris 86 |
| | | | Turquoise 38 | T. Lavender 81 | Angel Blue 88 |
| | | | | Ruby 82 | Rose Ballet 90 |

| | | | |
|---|---|--|----------|
| CORA S · M · L · XL P.132 |  | Modern Classics > Warm-ups and Accessories Socks Polyester | Noir 01 |
| | | | Blanc 02 |
| | | | Rose 03 |
| | | | Chair 30 |

| | | | |
|---|---|--|----------|
| GABY One Size P.127 |  | Modern Classics > Warm-ups and Accessories Stirrup Legwarmers Acrylic Knit | Noir 01 |
| | | | Blanc 02 |
| | | | Rose 03 |


| | | | |
|--|---|---|-----------|
| GLOIRE S/M - M/L Child S/M - L/XL Adult P.131 |  | Modern Classics > Warm-ups and Accessories Convertible, Footed or Footless Tights Lycra and Supplex | Poudré 60 |
|--|---|---|-----------|


| | | | |
|---|---|--|---------------------|
| LEAH One Size P.134 |  | Modern Classics > Warm-ups and Accessories Stretch Headband | Microfiber (P.141) |
| | | | Matte Lycra (P.142) |


| | | | |
|---|---|---|----------|
| LYNA One Size P.128 |  | Modern Classics > Warm-ups and Accessories Thigh Length Stirrup Legwarmers Acrylic Knit | Noir 01 |
| | | | Blanc 02 |
| | | | Rose 03 |


| | | | |
|--|---|---|---------------------|
| ZOÉ One Size P.135 |  | Modern Classics > Warm-ups and Accessories Scrunchie | Microfiber (P.141) |
| | | | Matte Lycra (P.142) |

Bags

| | | | |
|---|---|---|-----------------|
| BATTEMENT 15115 P.138 |  | Modern Classics > Warm-ups and Accessories Velcro Logos Backpack | Heather Pink 91 |
|---|---|---|-----------------|

| | | | |
|--|---|--|--------------------|
| CABRIOLE 15118 P.139 |  | Modern Classics > Warm-ups and Accessories Backpack | Noir 01 |
| | | | Heather Grey 110 |
| | | | Heather Purple 111 |

| | | | |
|--|---|---|---------|
| GLISSADE 15100 P.136 |  | Modern Classics > Warm-ups and Accessories Medium Duffel Bag | Noir 01 |
| | | | Rose 03 |

| | | | |
|--|---|--|---------|
| PENCHÉ 15116 P.137 |  | Modern Classics > Warm-ups and Accessories Small Duffel Bag | Noir 01 |
|--|---|--|---------|

Size Conversion Charts

| | | | | | |
|-------------|----|----|----|----|----|
| Ballet Rosa | 36 | 38 | 40 | 42 | 44 |
|-------------|----|----|----|----|----|

| | | | | | |
|-----------|--|--|--|--|--|
| USA | | | | | |
| UK | | | | | |
| Canada | | | | | |
| Australia | | | | | |
| Japan | | | | | |

| | | | | | |
|-------|----|----|----|----|----|
| Italy | 40 | 42 | 44 | 46 | 48 |
|-------|----|----|----|----|----|

| | | | | | |
|-------------|--|--|--|--|--|
| Germany | | | | | |
| Austria | | | | | |
| Netherlands | | | | | |
| Sweden | | | | | |
| Switzerland | | | | | |

| | | | | | |
|----------|----------|----|----|----|----|
| Portugal | | | | | |
| Spain | | | | | |
| France | 14a / 36 | 38 | 40 | 42 | 44 |
| Belgium | | | | | |

This chart shows the nearest international conversion for different countries. Size and fit can vary, so please use this chart as a general guide only.

How to measure

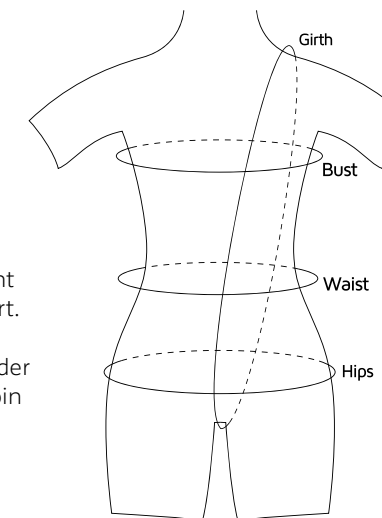
Bust Wrap the measuring tape around the fullest part of your chest.

Waist Measure around your natural waistline, which is the smallest area of the waist.

Hips Stand with feet together. Keeping tape straight and parallel to the floor, measure around fullest part.

Girth Place a tape measure at the top of the shoulder where a leotard strap sits, then down under the groin and back to the same shoulder.

Inseam Measure inside length of your leg from the groin to bottom of ankle.



Ladies cm (inch)

| Bust | Waist | Hips | Girth | Size |
|-----------------|---------------|-----------------|----------|------|
| 82-86 (32/34) | 60-64 (24/25) | 86-92 (34/36) | 140 (55) | 36 |
| 86-92 (34/36) | 64-67 (25/26) | 92-97 (36/38) | 147 (58) | 38 |
| 92-97 (36/38) | 67-72 (27/28) | 97-101 (38/40) | 152 (60) | 40 |
| 97-101 (38/40) | 73-79 (29/31) | 101-106 (40/42) | 157 (62) | 42 |
| 101-106 (40/42) | 79-84 (31/33) | 106-112 (42/44) | 162 (64) | 44 |

Youth cm (inch)

| Bust | Waist | Hips | Girth | Size |
|---------------|---------------|---------------|-----------------|------|
| 51-53 (20/21) | 48-51 (19/20) | 53-58 (21/23) | 89-96 (35/38) | 4 |
| 55-58 (22/23) | 53-55 (21/22) | 58-63 (23/25) | 99-106 (39/42) | 6 |
| 60-63 (24/25) | 53-58 (21/23) | 63-68 (25/27) | 109-116 (43/46) | 8 |
| 66-71 (26/28) | 58-63 (23/25) | 68-73 (27/29) | 117-126 (47/50) | 10 |
| 73-78 (29/31) | 66-71 (26/28) | 76-81 (30/32) | 117-126 (50/53) | 12 |

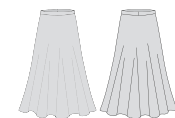
These charts should be used as a general fitting guide only. Size availability and individual sizing may vary by style.

Bottoms cm (inch)

| Sizes | Waist (common to all styles) | Malika Inseam | Eloi Inseam | Maxine Inseam | Maud Inseam | Myléne Inseam | Joris Inseam |
|-------|---------------------------------|------------------|----------------|------------------|----------------|------------------|-----------------|
| 4 | 21 (8.26) | 3 (1.18) | 3 (1.18) | 12 (4.72) | 24 (9.48) | 30 (11.81) | 40 (15.74) |
| 6 | 22 (8.66) | 3,5 (1.38) | 3,5 (1.38) | 13,5 (5.31) | 26,5 (10.43") | 33 (13) | 44 (17.32) |
| 8 | 23 (9) | 4 (1.57) | 4 (1.57) | 15 (5.9) | 29 (11.41) | 36 (14.17) | 50 (19.68) |
| 10 | 24 (9.44) | 4,5 (1.77) | 4,5 (1.77) | 16,5 (6.5) | 31,5 (12.4) | 39 (15.35) | 52 (20.47) |
| 12 | 25 (9.84) | 5 (1.97) | 5 (1.97) | 18 (7) | 34 (13.4) | 42 (16.53) | 56 (22) |
| 36 | 26 (10.23) | 5,5 (2.16) | 5,5 (2.16) | 19,5 (7.7) | 36,5 (14.37) | 45 (17.71) | 59 (23.22) |
| 38 | 27 (10.62) | 5,5 (2.16) | 5,5 (2.16) | 20,5 (8) | 38 (14.96) | 47,5 (18.7) | 62 (24.4) |
| 40 | 28 (11) | 5,5 (2.16) | 5,5 (2.16) | 21,5 (8.46) | 40 (15.74) | 50 (19.68) | 65 (25.6) |
| 42 | 29 (11.4) | 5,5 (2.16) | 5,5 (2.16) | 22,5 (8.86) | 42 (16.53) | 52 (20.47) | 68 (26.77) |
| 44 | 30 (11.8) | 5,5 (2.16) | 5,5 (2.16) | 23,5 (9.25) | 44 (17.32) | 55 (21.65) | 71 (27.95) |

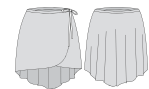
These charts should be used as a general fitting guide only.

Skirt Sizes cm (inch)



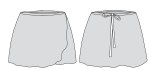
Faith

| Size | Waist | Length (Front and Back) |
|-------|-------------------|----------------------------|
| 8-10 | 57-61 (22.4/24) | 51 (20) |
| 12-14 | 62-65 (24.5/25.6) | 51 (20) |
| 36-38 | 66-71 (26/27.9) | 66 (26) |
| 40-42 | 72-78 (28.3/30.7) | 66 (26) |



Stella

| Size | Waist | Back Length |
|-------|-------------------|-------------|
| 4-6 | 52-56 (20.5/22) | 35 (13.5) |
| 8-10 | 57-61 (22.5/24) | 35 (13.5) |
| 10-12 | 62-65 (24.5/25.6) | 35 (13.5) |
| 36-38 | 66-71 (26/27.9) | 50 (19.5) |
| 40-42 | 72-78 (28.3/30.7) | 50 (19.5) |



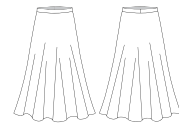
Tomomi

| Size | Waist | Back Length |
|-------|-------------------|-------------|
| 4-6 | 52-56 (20.5/22) | 25 (10) |
| 8-10 | 57-61 (22.5/24) | 25 (10) |
| 10-12 | 62-65 (24.5/25.6) | 25 (10) |
| 36-38 | 66-71 (26/27.9) | 30 (12) |
| 40-42 | 72-78 (28.3/30.7) | 30 (12) |

Belts cm (inch)

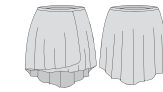


| Sizes | Waist |
|-------|-----------------|
| 4-6 | 52-56 (20.5/22) |
| 8-10 | 57-61 (22.5/24) |
| 10-12 | 62-66 (24.5/26) |
| 36-38 | 66-72 (26/28) |
| 38-40 | 72-78 (28/30.5) |
| 42-44 | 78-82 (30.5/32) |



Alix

| Size | Waist | Length (Front and Back) |
|-------------------|-----------------|----------------------------|
| 36-38 Short | 66-71 (26/27.9) | 61 (24) |
| 36-38 Standard | 66-71 (26/27.9) | 66 (26) |
| 36-38 Long | 66-71 (26/27.9) | 73 (28.5) |
| 38-40 Standard | 72-77 (28/30.3) | 66 (26) |
| 38-40 Long | 72-77 (28/30.3) | 73 (28.5) |
| 42-44 Standard | 78-82 (30.7/32) | 66 (26) |
| 42-44 Long | 78-82 (30.7/32) | 73 (28.5) |



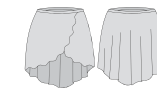
Alyssa

| Size | Waist | Back Length | Front Length |
|------|-----------------|-------------|--------------|
| 2-4 | 48-51 (18.9/20) | 28 (11) | 22 (8.7) |
| 4-6 | 52-56 (20.5/22) | 33 (13) | 24 (9.4) |
| 8-10 | 57-61 (22.5/24) | 38 (15) | 26 (10.2) |



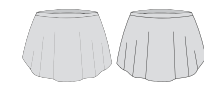
Masako

| Size | Waist | Length (Front and Back) |
|-------------------|-------------------|----------------------------|
| 4-6 Short | 52-56 (20.5/22) | 51 (20) |
| 4-6 Standard | 52-56 (20.5/22) | 56 (22) |
| 4-6 Long | 52-56 (20.5/22) | 61 (24) |
| 8-10 Short | 57-61 (22.5/24) | 51 (20) |
| 8-10 Standard | 57-61 (22.5/24) | 56 (22) |
| 8-10 Long | 57-61 (22.5/24) | 61 (24) |
| 10-12 Short | 62-65 (24.5/25.6) | 51 (20) |
| 10-12 Standard | 62-65 (24.5/25.6) | 56 (22) |
| 10-12 Long | 62-65 (24.5/25.6) | 61 (24) |
| 36-38 Short | 66-71 (26/27.9) | 51 (20) |
| 36-38 Standard | 66-71 (26/27.9) | 56 (22) |
| 36-38 Long | 66-71 (26/27.9) | 61 (24) |



Bethanie

| Size | Waist | Back Length | Front Length |
|-------|-------------------|-------------|--------------|
| 4-6 | 52-56 (20.5/22) | 30 (12) | 22 (8.7) |
| 8-10 | 57-61 (22.5/24) | 32 (12.5) | 24 (9.4) |
| 10-12 | 62-65 (24.5/25.6) | 34 (13.5) | 26 (10.2) |
| 36-38 | 66-71 (26/27.9) | 36 (14.5) | 27 (10.6) |
| 40-42 | 72-78 (28.3/30.7) | 36 (14.5) | 27 (10.6) |



Skylar

| Size | Waist | Back Length | Front Length |
|------|--------------------|-------------|--------------|
| 6 | 54-57 (21.4/ 22) | 22 (8.7) | 19 (7.5) |
| 8 | 58-60 (22.5/ 23.5) | 23 (9) | 20 (7.9) |
| 10 | 60-62 (23.5/24.5) | 25 (9.8) | 22 (8.7) |
| 12 | 63-65 (25/25.6) | 25 (9.8) | 22 (8.7) |
| 36 | 66-68 (26/26.8) | 33 (13) | 27 (10.6) |
| 38 | 69-71 (27/27.9) | 33 (13) | 27 (10.6) |
| 40 | 72-75 (28/29.5) | 33 (13) | 27 (10.6) |
| 42 | 76-78 (30/30.7) | 33 (13) | 27 (10.6) |
| 44 | 79-82 (31/32) | 33 (13) | 27 (10.6) |

Logo PROGRAM

The 5 EASY STEPS

01 Choose styles and colors

You may utilize the Ballet Rosa Academy Catalog as well as the Ballet Rosa HOMME Academy Collection to select the styles that best suit the studios. To choose colors for each class level, please refer to pages 140 – 145.

02 Choose accessories and men's styles

Ballet Rosa offers a wide range of skirts and cover-ups to complement dress code leotards. Accessories may also be printed with your studio logo! To select your boys' and men's uniforms, please refer to the HOMME Catalog - Academy collection. The uniforms can even match the colors of the rest of the dress code for a cohesive look. For the final touch, don't forget tights or socks!

03 Add a logo

Make your store stand out! Customizing dress codes with a studio logo on it will create a professional image for your customers, will make dancers feel special, and will guarantee a smooth shopping experience, assuring them that they are buying the correct products for class.

04 Choose logo treatment

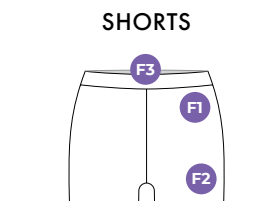
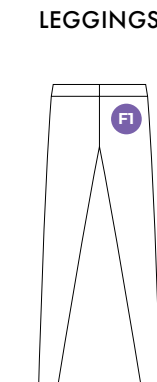
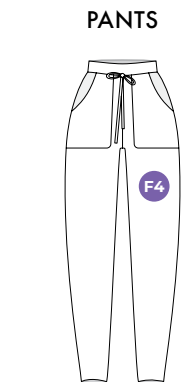
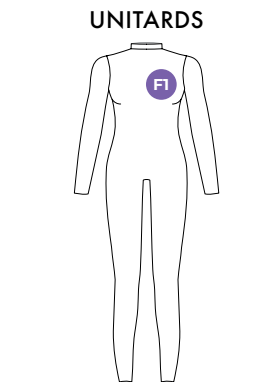
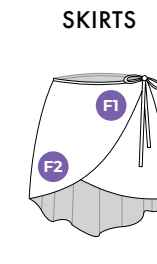
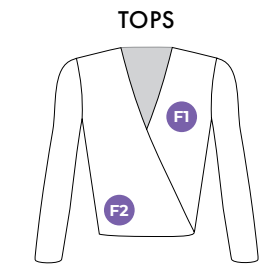
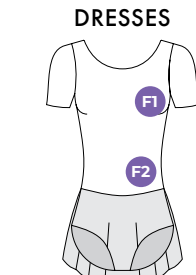
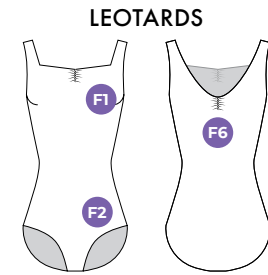
Choose your look. A studio logo may either be embroidered or printed as a heat seal. Opt for a subtle look by keeping the logo color similar to the leotard, or make sure it stands out with a contrasting color.

05 Choose logo dimension and placement

Complete the design of a new studio dress code by choosing the dimension and logo placement for each garment.

PLACEMENT

All garments are pre-printed with our standard transparent Ballet Rosa logo on the back. The Ballet Rosa logo cannot be removed in any situation. For this reason, we recommend studio logos be printed on the front for a clear look.



EXCEPTIONS

Certain garments may not be able to be printed in all available locations due to design elements such as seams or pleats. Please observe the following chart when choosing logo placement. Styles not listed below may be printed on any available options.

| | F1 | F2 | F6 | | F1 | F2 | F6 |
|----------|----|----|----|---------|----|----|----|
| Anaya | × | ✓ | ✓ | Kali | × | × | ✓ |
| Arya | × | ✓ | ✓ | Lovette | × | ✓ | ✓ |
| Aube | × | ✓ | ✓ | Luana | × | ✓ | ✓ |
| Cannelle | × | ✓ | ✓ | Opal | × | × | × |
| Cherine | × | ✓ | ✓ | Riva | × | × | ✓ |
| Colombe | × | ✓ | ✓ | Sasha | ✓ | × | × |
| Isla | × | ✓ | ✓ | Tori | × | × | ✓ |
| Itzel | × | ✓ | ✓ | Verona | × | × | × |
| Jania | × | ✓ | ✓ | | | | |

LOGO COLORS

Choose either:

Embroidery

Recommended:
Gris 47 / Noir 01 / Blanc 02

Please contact us to discuss embroidered logos with 2 or more colors, or 1 color embroidery in additional color options.

Heat Seal

Recommended:
Transparent / Gris 47 / Noir 01 / Blanc 02

Please contact us to discuss additional heat seal color options or Pantone color matching.

Available for:

Leotards | Skirts | Pants | Leggings | Glissade Duffel 15100
Dresses | Shorts | Jackets | Warm-ups | Embroidery only

DIMENSIONS

Please utilize one of the following logo standards recommended for printing.



5 x 5 cm
1.97 x 1.97 in



3 x 5 cm
1.18 x 1.97 in



2 x 6 cm
0.79 x 2.36 in

Due to the nature of the heat seal process, fine lines in logos are not recommended as they may be prone to wearing off over time. Please adjust logo designs appropriately for printing. Talk to your Ballet Rosa sales representative about the best way to prepare your design.



As we celebrate the launch of our innovative new Academy catalog, we do so with profound gratitude and a heavy heart. This catalog, a testament to creativity, dedication, and boundless talent, is dedicated to the loving memory of our co-founder, Adão Coelho, who left us on May 15, 2023. Adão's vision, passion, and unwavering commitment to the art of dance continues to inspire us all. Through this catalog, we honor his legacy and the enduring spirit that he instilled in our team. The seamless collaboration of our staff, the remarkable performances of our dancers, and the artistry of our photographer are a tribute to the strong foundation he helped create. Adão's presence will forever echo in the elegance and grace of these designs. We thank each one of you for your tireless efforts and your dedication to bringing this vision to life. It is in his memory that we proudly share this catalog with the world.

Thank you

Photography:

Joe Lyman
LymanDVM Photography

Director:

Victoria Lyman Guimarães

Graphic Design:

QOOB Design Studio

Dancers:

Harper Anderson
Daniela Branavitskaya
Zakara Cubia
Jada Edwards
Miina Fujie
Evangeline Kragt
George Kremnev
Rio Saito
Trisha Sharma
Margot Shriner
Amelia Sias
Payton Vickey

Hair and Makeup:

Kathryn Julian
Antonia Mead
Ashley Olive

Photography Assistant:

Faith Lyman

Wardrobe Assistants:

Annie Beebe Alexander
Mafalda Guimarães
Avamarie Via

Special thanks to:

Chloe Lyman Guimarães
Alexei Kremnev
Hilary Strobe Lyman
A&A Ballet Center for Dance

BALLETROSA.COM

Follow us on:

**Headquarters**

Rua da Peça, 1 - Ronfe
4805-427 Guimarães
Portugal

**Customer Service
(Europe and Asia)**

Phone +351 253 519 143
customerservice@balletrosa.com

Ballet Rosa USA

2114 Central Street
Evanston, IL 60201
United States of America

**Customer Service
(US and Canada)**

Phone +1 (312) 439-6733
usa@balletrosa.com

