



  
*Ballet Rosa*

— DIGITAL —  
COLOR  
GUIDE

---

# MICROFIBER

01 Noir  
02 Blanc



03 Rose



04 Ciel



07 Marine



09 Cassis



13 Orchidée



15 Aqua



16 Royal



23 Lagon



38 Turquoise



47 Gris



57 Cyclamen



72 Café au Lait



73 Viola



74 Teal



77 Encre Bleu



80 Purple



81 True Lavender



82 Ruby



83 Snorkel Blue



84 Poppy



86 Iris



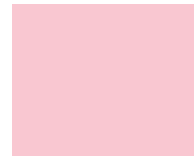
88 Angel Blue



89 Olive



90 Rose Ballet



93 French Rose



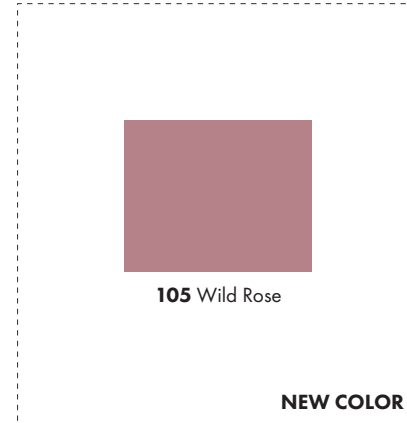
94 Buttercup



95 French Blue



96 Medium Orchid



105 Wild Rose

NEW COLOR

## MICROFIBER COMPOSITION 90% Polyamide · 10% Elastane

### WASH AND CARE

Due to the delicate nature of certain materials, kindly wear the dancewear garments with great care. Keeping your Ballet Rosa products in good shape depends solely on you. Each material has different quality standards. We suggest you respect the wash care labels and the care instructions stated below. The brand will not be liable for any damages caused by excessive or inappropriate usage.

**Attention:** intense sweating combined with the high temperature of the body over long periods. Color references are merely informative. Colors may vary slightly depending on material and dyeing batch.

### WASH INSTRUCTIONS



May be machine washed at 30°C  
Do not iron  
Use mild detergent. Do not bleach.  
Do not tumble dry  
Allow to dry flat  
Suitable for dry cleaning

# MATTE LYCRA

01 Noir  
02 Blanc



03 Rose



04 Ciel



07 Marine



08 Prunus



11 Mauve



12 Parme



14 Acero



15 Aqua



16 Royal



17 Rojo



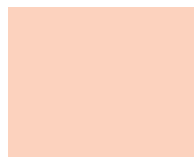
18 Grenadine



19 Khaki



26 Bordeaux



60 Poudré



104 Raspberry



107 Sedona



109 Dahlia

NEW COLORS

## MATTE LYCRA COMPOSITION 80% Polyamide · 20% Elastane

### WASH AND CARE

Due to the delicate nature of certain materials, kindly wear the dancewear garments with great care. Keeping your Ballet Rosa products in good shape depends solely on you. Each material has different quality standards. We suggest you respect the wash care labels and the care instructions stated below. The brand will not be liable for any damages caused by excessive or inappropriate usage.

**Attention:** intense sweating combined with the high temperature of the body over long periods. Color references are merely informative. Colors may vary slightly depending on material and dyeing batch.

### WASH INSTRUCTIONS



May be machine washed at 40°C  
Do not iron  
Use mild detergent. Do not bleach.  
Do not tumble dry  
Allow to dry flat  
Suitable for dry cleaning

# STRETCH MESH

01 Noir  
02 Blanc



03 Rose



04 Ciel



07 Marine



08 Prunus



12 Parme



13 Orchidée



15 Aqua



16 Royal



17 Rojo



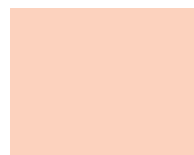
23 Lagon



26 Bordeaux



47 Gris



60 Poudré



72 Café au Lait



73 Viola



74 Teal



77 Encre Blue



82 Ruby



89 Olive



94 Buttercup



95 French Blue



96 Medium Orchid



105 Wild Rose



107 Sedona

NEW COLOR

## STRETCH MESH COMPOSITION 94% Polyamide · 6% Elastane

### WASH AND CARE

Due to the delicate nature of certain materials, kindly wear the dancewear garments with great care. Keeping your Ballet Rosa products in good shape depends solely on you. Each material has different quality standards. We suggest you respect the wash care labels and the care instructions stated below. The brand will not be liable for any damages caused by excessive or inappropriate usage.

**Attention:** intense sweating combined with the high temperature of the body over long periods. Color references are merely informative. Colors may vary slightly depending on material and dyeing batch.

### WASH INSTRUCTIONS



Wash by hand only  
Do not iron  
Use mild detergent. Do not bleach.  
Do not tumble dry  
Allow to dry flat  
Suitable for dry cleaning

# STRETCH COTTON

01 Noir  
02 Blanc



03 Rose



07 Marine



24 Niagara



26 Bordeaux



33 Celeste



34 Violet



35 Fleur



38 Turquoise



48 Amethyste



52 Nude



53 Framboise



55 Sky



56 Acier



57 Cyclamen



80 Purple



81 True Lavender



82 Ruby



83 Snorkel Blue



84 Poppy



86 Iris



88 Angel Blue



89 Olive



90 Rose Ballet

## STRETCH COTTON COMPOSITION 90% Polyamide · 10% Elastane

### WASH AND CARE

Due to the delicate nature of certain materials, kindly wear the dancewear garments with great care. Keeping your Ballet Rosa products in good shape depends solely on you. Each material has different quality standards. We suggest you respect the wash care labels and the care instructions stated below. The brand will not be liable for any damages caused by excessive or inappropriate usage.

**Attention:** intense sweating combined with the high temperature of the body over long periods. Color references are merely informative. Colors may vary slightly depending on material and dyeing batch.

### WASH INSTRUCTIONS



Wash by hand only  
Do not iron  
Use mild detergent. Do not bleach.  
Do not tumble dry  
Allow to dry flat  
Suitable for dry cleaning

## CHIFFON – MOUSSELINE

01 Noir  
02 Blanc



07 Marine



38 Turquoise



57 Cyclamen



81 True Lavender



82 Ruby



83 Snorkel Blue



86 Iris



90 Rose Ballet

## CHIFFON – MOUSSELINE COMPOSITION 100% Polyester

### WASH AND CARE

Due to the delicate nature of certain materials, kindly wear the dancewear garments with great care. Keeping your Ballet Rosa products in good shape depends solely on you. Each material has different quality standards. We suggest you respect the wash care labels and the care instructions stated below. The brand will not be liable for any damages caused by excessive or inappropriate usage.

**Attention:** intense sweating combined with the high temperature of the body over long periods. Color references are merely informative. Colors may vary slightly depending on material and dyeing batch.

### WASH INSTRUCTIONS



Wash by hand only  
Do not iron  
Use mild detergent. Do not bleach.  
Do not tumble dry  
Allow to dry flat  
Suitable for dry cleaning

# WARM-UP

01 Noir  
02 Blanc



03 Rose



07 Marine



26 Bordeaux



42 Gris Melange

## WARM-UP COMPOSITION 100% Polyester

### WASH AND CARE

Due to the delicate nature of certain materials, kindly wear the dancewear garments with great care. Keeping your Ballet Rosa products in good shape depends solely on you. Each material has different quality standards. We suggest you respect the wash care labels and the care instructions stated below. The brand will not be liable for any damages caused by excessive or inappropriate usage.

**Attention:** intense sweating combined with the high temperature of the body over long periods. Color references are merely informative. Colors may vary slightly depending on material and dyeing batch.

### WASH INSTRUCTIONS



May be machine washed at 30° C  
Do not iron  
Use mild detergent. Do not bleach.  
Do not tumble dry  
Allow to dry flat  
Suitable for dry cleaning

# TENCEL MICROFIBER®



01 Noir

TENCEL MICROFIBER® COMPOSITION 93% Lyocell · 7% Elastane

## WASH AND CARE

Due to the delicate nature of certain materials, kindly wear the dancewear garments with great care. Keeping your Ballet Rosa products in good shape depends solely on you. Each material has different quality standards. We suggest you respect the wash care labels and the care instructions stated below. The brand will not be liable for any damages caused by excessive or inappropriate usage.

**Attention:** intense sweating combined with the high temperature of the body over long periods. Color references are merely informative. Colors may vary slightly depending on material and dyeing batch.

## WASH INSTRUCTIONS



May be machine washed at  
30°C permanent press

Do not iron

Use mild detergent. Do not bleach.

Do not tumble dry

Allow to dry flat

Suitable for dry cleaning



# INTERLOCK



01 Noir

**INTERLOCK** COMPOSITION 100% Polyester

## WASH AND CARE

Due to the delicate nature of certain materials, kindly wear the dancewear garments with great care. Keeping your Ballet Rosa products in good shape depends solely on you. Each material has different quality standards. We suggest you respect the wash care labels and the care instructions stated below. The brand will not be liable for any damages caused by excessive or inappropriate usage.

**Attention:** intense sweating combined with the high temperature of the body over long periods. Color references are merely informative. Colors may vary slightly depending on material and dyeing batch.

## WASH INSTRUCTIONS



May be machine washed at 30° C  
Do not iron  
Use mild detergent. Do not bleach.  
Do not tumble dry  
Allow to dry flat  
Suitable for dry cleaning

# LACE

01 Noir  
02 Blanc



07 Marine



08 Prunus



47 Gris



60 Poudré



72 Café au Lait



89 Olive



105 Wild Rose

**LACE COMPOSITION** 85% Polyamide · 15% Elastane

## WASH AND CARE

Due to the delicate nature of certain materials, kindly wear the dancewear garments with great care. Keeping your Ballet Rosa products in good shape depends solely on you. Each material has different quality standards. We suggest you respect the wash care labels and the care instructions stated below. The brand will not be liable for any damages caused by excessive or inappropriate usage.

**Attention:** intense sweating combined with the high temperature of the body over long periods. Color references are merely informative. Colors may vary slightly depending on material and dyeing batch.

## WASH INSTRUCTIONS



Wash by hand only  
Do not iron  
Use mild detergent. Do not bleach.  
Do not tumble dry  
Allow to dry flat  
Suitable for dry cleaning

# CRUSHED VELVET

01 Noir  
02 Blanc



03 Rose



07 Marine



15 Aqua



26 Bordeaux



58 Bourgogne

**CRUSHED VELVET COMPOSITION** 8.5% Polyamide · 15% Elastane

## WASH AND CARE

Due to the delicate nature of certain materials, kindly wear the dancewear garments with great care. Keeping your Ballet Rosa products in good shape depends solely on you. Each material has different quality standards. We suggest you respect the wash care labels and the care instructions stated below. The brand will not be liable for any damages caused by excessive or inappropriate usage.

**Attention:** intense sweating combined with the high temperature of the body over long periods. Color references are merely informative. Colors may vary slightly depending on material and dyeing batch.

## WASH INSTRUCTIONS



May be machine washed at 30° C  
Do not iron  
Use mild detergent. Do not bleach.  
Do not tumble dry  
Allow to dry flat  
Suitable for dry cleaning

# PLAIN VELVET

01 Noir



47 Gris



79 Century

**PLAIN VELVET COMPOSITION** 85% Polyamide · 15% Elastane

## WASH AND CARE

Due to the delicate nature of certain materials, kindly wear the dancewear garments with great care. Keeping your Ballet Rosa products in good shape depends solely on you. Each material has different quality standards. We suggest you respect the wash care labels and the care instructions stated below. The brand will not be liable for any damages caused by excessive or inappropriate usage.

**Attention:** intense sweating combined with the high temperature of the body over long periods. Color references are merely informative. Colors may vary slightly depending on material and dyeing batch.

## WASH INSTRUCTIONS



May be machine washed at 30° C  
Do not iron  
Use mild detergent. Do not bleach.  
Do not tumble dry  
Allow to dry flat  
Suitable for dry cleaning

# STRETCH BAMBOO

01 Noir  
02 Blanc



03 Rose



61 Cacao



62 Nuit



63 Taupe

## STRETCH BAMBOO

### COMPOSITION

Stretch Bamboo: 92% Viscose Bamboo · 8% Elastane

### WASH AND CARE

Due to the delicate nature of certain materials, kindly wear the dancewear garments with great care. Keeping your Ballet Rosa products in good shape depends solely on you. Each material has different quality standards. We suggest you respect the wash care labels and the care instructions stated below. The brand will not be liable for any damages caused by excessive or inappropriate usage.

**Attention:** intense sweating combined with the high temperature of the body over long periods. Color references are merely informative. Colors may vary slightly depending on material and dyeing batch.

### WASH INSTRUCTIONS



May be machine washed at 40° C  
Do not iron  
Use mild detergent. Do not bleach.  
Do not tumble dry  
Allow to dry flat  
Suitable for dry cleaning

# LIGHTWEIGHT BAMBOO

01 Noir  
02 Blanc



61 Cacao



62 Nuit



63 Taupe



70 Bleu Prusse

## LIGHTWEIGHT BAMBOO

### COMPOSITION

Lightweight: 100% Viscose Bamboo

### WASH AND CARE

Due to the delicate nature of certain materials, kindly wear the dancewear garments with great care. Keeping your Ballet Rosa products in good shape depends solely on you. Each material has different quality standards. We suggest you respect the wash care labels and the care instructions stated below. The brand will not be liable for any damages caused by excessive or inappropriate usage.

**Attention:** intense sweating combined with the high temperature of the body over long periods. Color references are merely informative. Colors may vary slightly depending on material and dyeing batch.

### WASH INSTRUCTIONS



May be machine washed at 40°C  
Do not iron  
Use mild detergent. Do not bleach.  
Do not tumble dry  
Allow to dry flat  
Suitable for dry cleaning

**Headquarters**

Rua da Peça, 1 · Ronfe  
4805-427 Guimarães  
Portugal

**Customer Service**

(Europe and Asia)  
Phone +351 253 519 143  
info@balletrosa.com

**Ballet Rosa USA**

2114 Central Street  
Evanston, IL 60201  
United States of America

**Customer Service**

(US and Canada)  
Phone +1 (312) 439-6733  
usa@balletrosa.com



BALLETROSA.COM