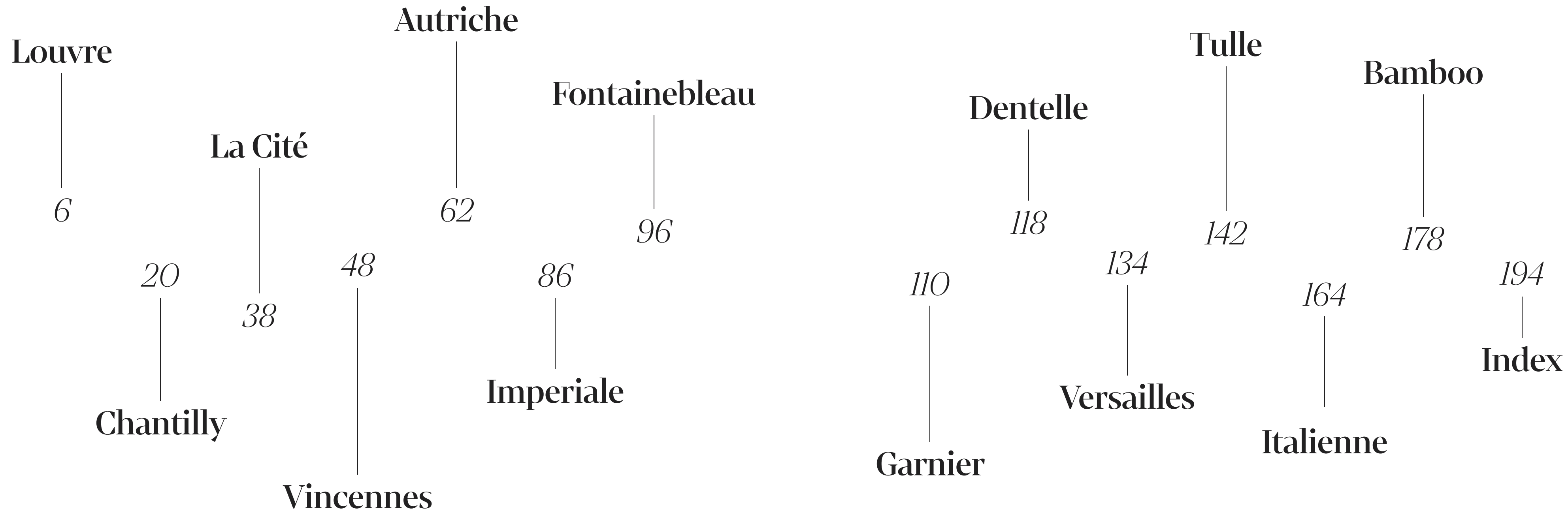


Créateur 2025




Ballet Rosa



Louvre Collection

Graceful Motion

Salomé wearing **Fantine** in *Sedona*





Thalie

Adult 36 > 44 □ Youth 10 and 12
Olive · Sedona · Aqua · Encre Bleu



Fantine

Adult 36 › 44 □ Youth 10 and 12
Sedona · Olive · Encre Bleu · Aqua





Pictured skirt: Skykar in Olive

Doriane



Adult 36 - 44 □ Youth 8 - 12
 Sedona · Olive · Encre Bleu · Aqua



Antonia

Adult 36 > 44 □ Youth 8 > 12
Encre Bleu · Aqua · Olive · Sedona





Pictured skirt: **Ninette** in *Olive*



Pictured skirt: **Skyline** in *Sedona*

Anouk

Adult 36 › 44 □ Youth 8 › 12
Olive · Aqua · Sedona · Encre Bleu



Coralie



Adult 36 · 44 □ Youth 8 · 12
Sedona · Olive · Encre Bleu · Aqua

Chantilly Collection

Fearless Design

Sirui wearing **Miette** in *Wild Rose*





Pictured skirt: Erika in *Noir*

Miette



Adult 36 > 44
Noir · Wild Rose



Pictured skirt: Skylar in Wild Rose

Tavin

Adult 36 > 44 □ Youth 10 and 12
Noir · Wild Rose





Pictured skirt: Skylar in Noir

Gaëlle

—
Adult 36 - 44
Noir · Wild Rose

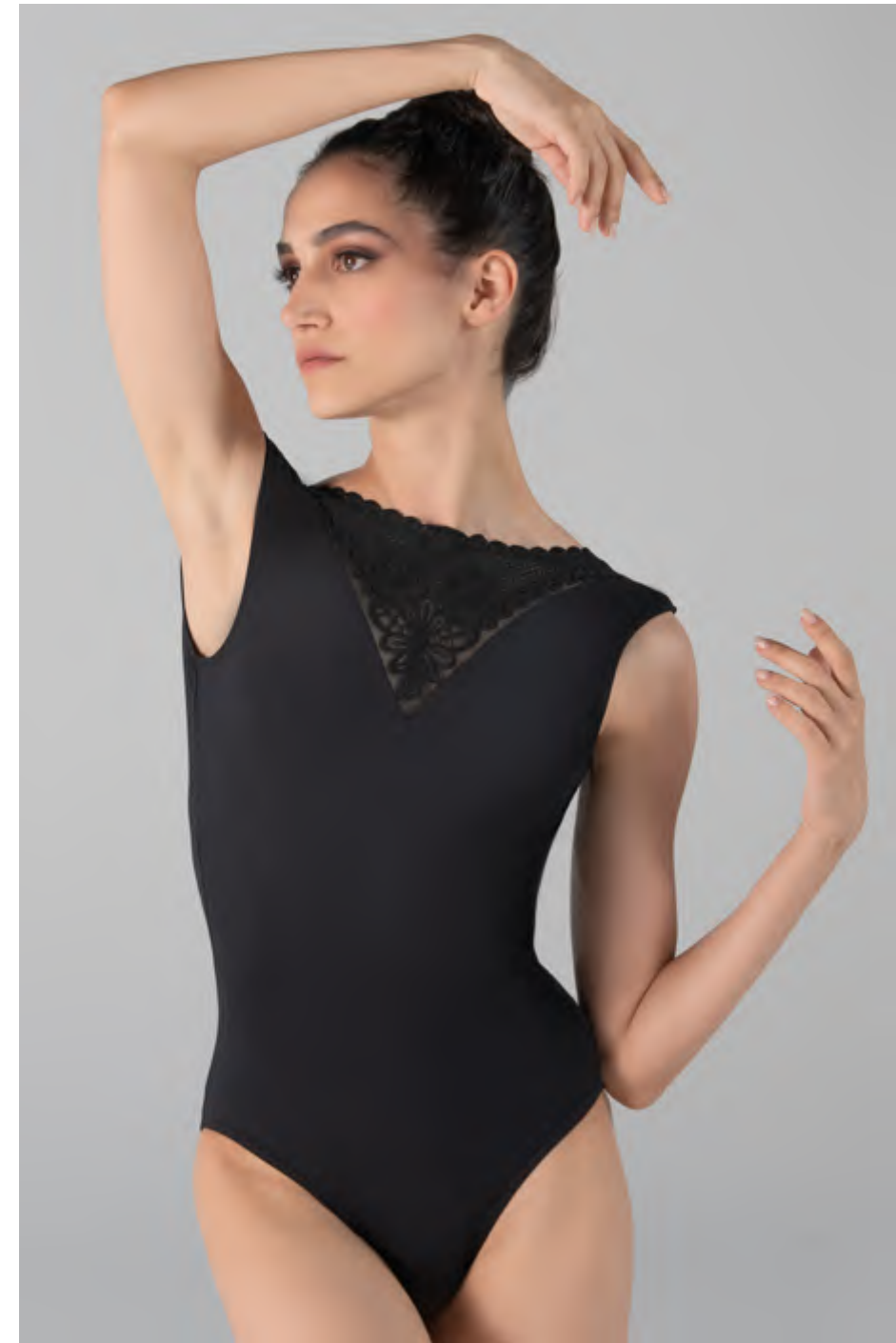
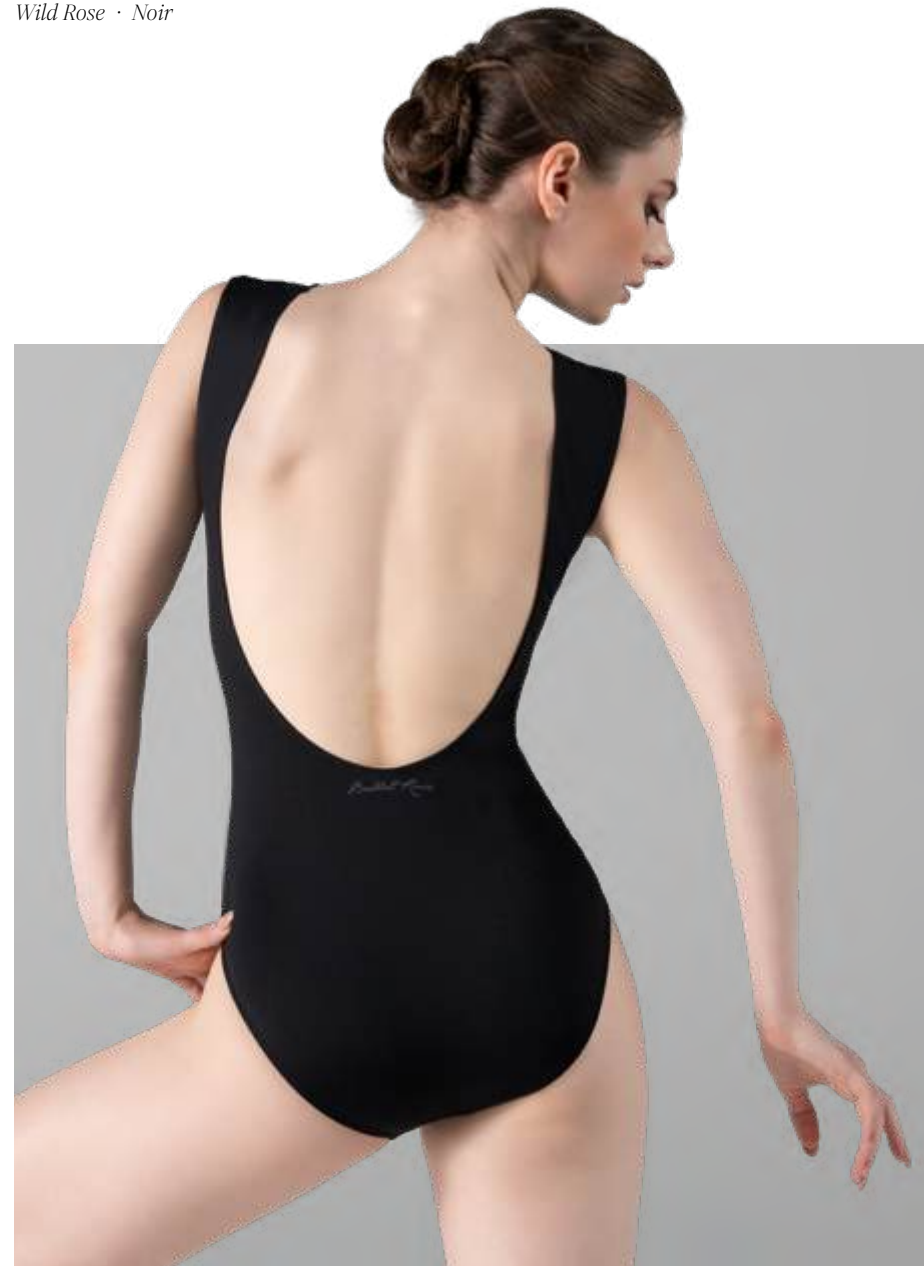




Pictured skirt: *Skyler* in *Wild Rose*

Axelle

—
Adult 36 - 44
Wild Rose · Noir





Pictured skirt: Fabia in Noir

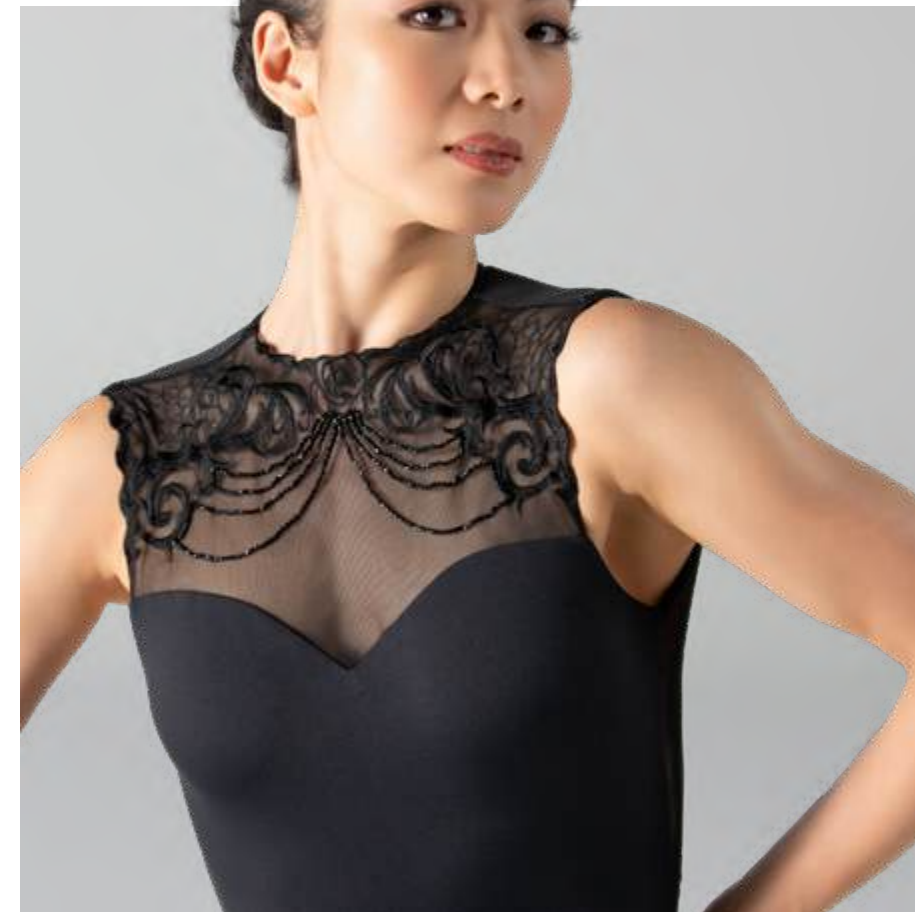
Paris

Adult 36 › 44 □ Youth 10 and 12
Noir · Café au Lait





Acadia

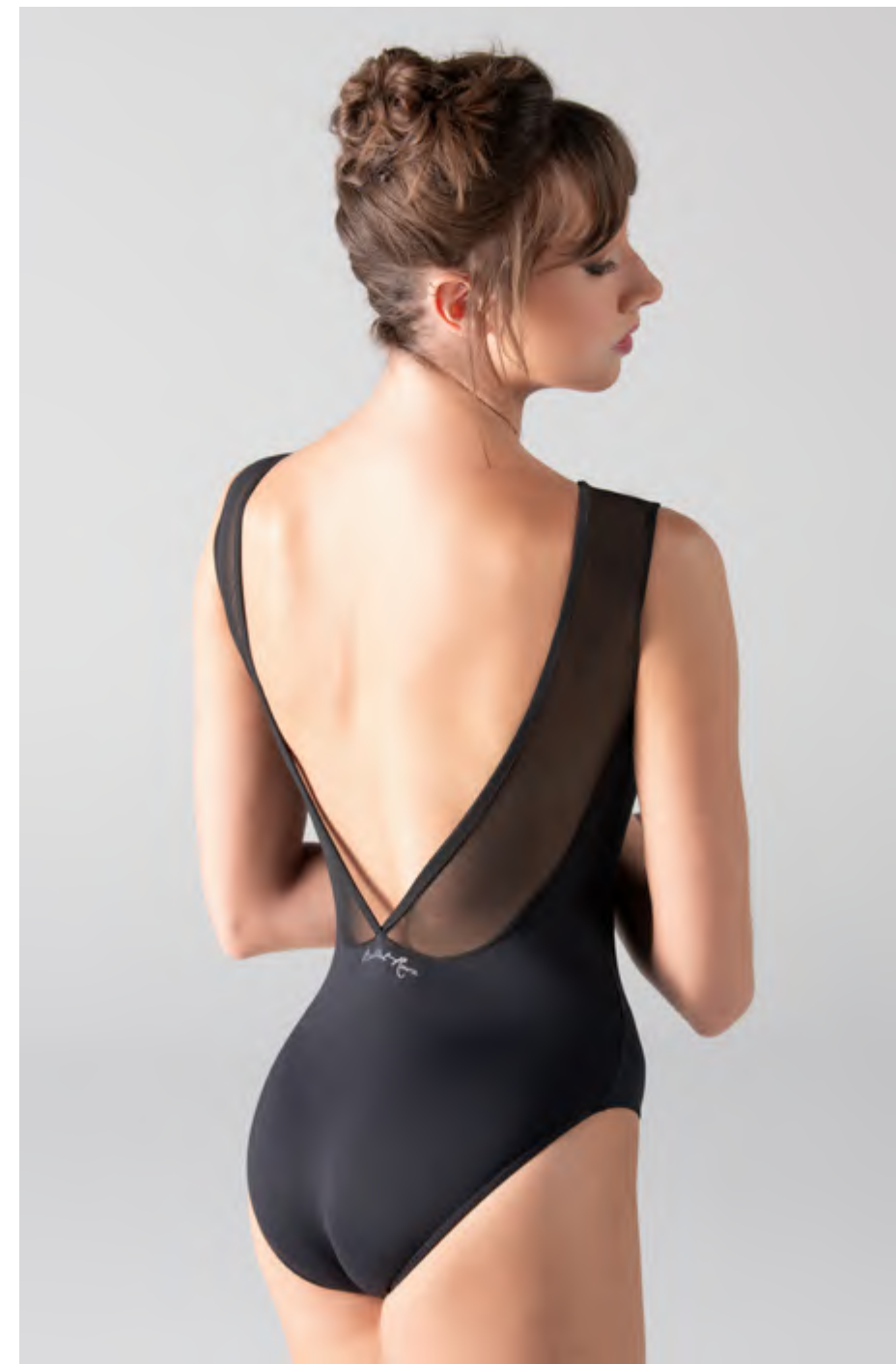


Adult 36 > 44
Noir



Avignon

Adult 36 - 44
Wild Rose · Noir





Pictured skirt: *Millic* in *Wild Rose*



Bouvier

Adult 36 > 44
Wild Rose · Noir

La Cité Collection

Avant-Garde Expression

Amanda wearing Duval in *Noir with Blanc*





Pictured skirt: Skylar in Noir

Cezanne

Adult 36 - 44

Sedona with Noir · Noir with Blanc







Braque



Adult 36 > 44
Noir with Blanc · Sedona with Noir



Duval

Adult 36 - 44

Noir with Blanc · Sedona with Noir



Vincennes Collection

Sophisticated Glamour

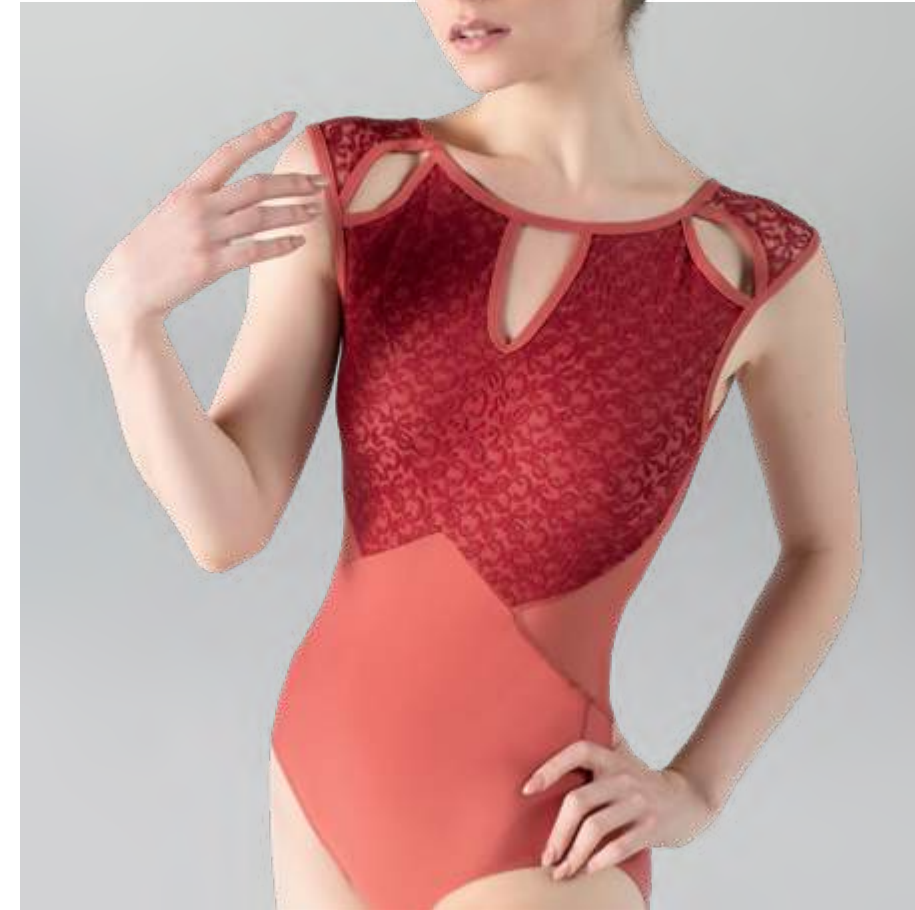
Taylor wearing **Jourdain** in *Royal*





Pictured skirt: Erika in Royal

Delia



Adult 36 > 44 □ Youth 10 and 12
Royal · Bordeaux · Noir · Sedona



Jourdain

Adult 36 › 44 □ Youth 10 and 12
Noir · Bordeaux · Royal · Sedona



Laura

Adult 36 · 44 □ Youth 10 and 12
Noir · Bordeaux · Royal · Sedona

Pictured with Evana skirts



Skirt

Evana

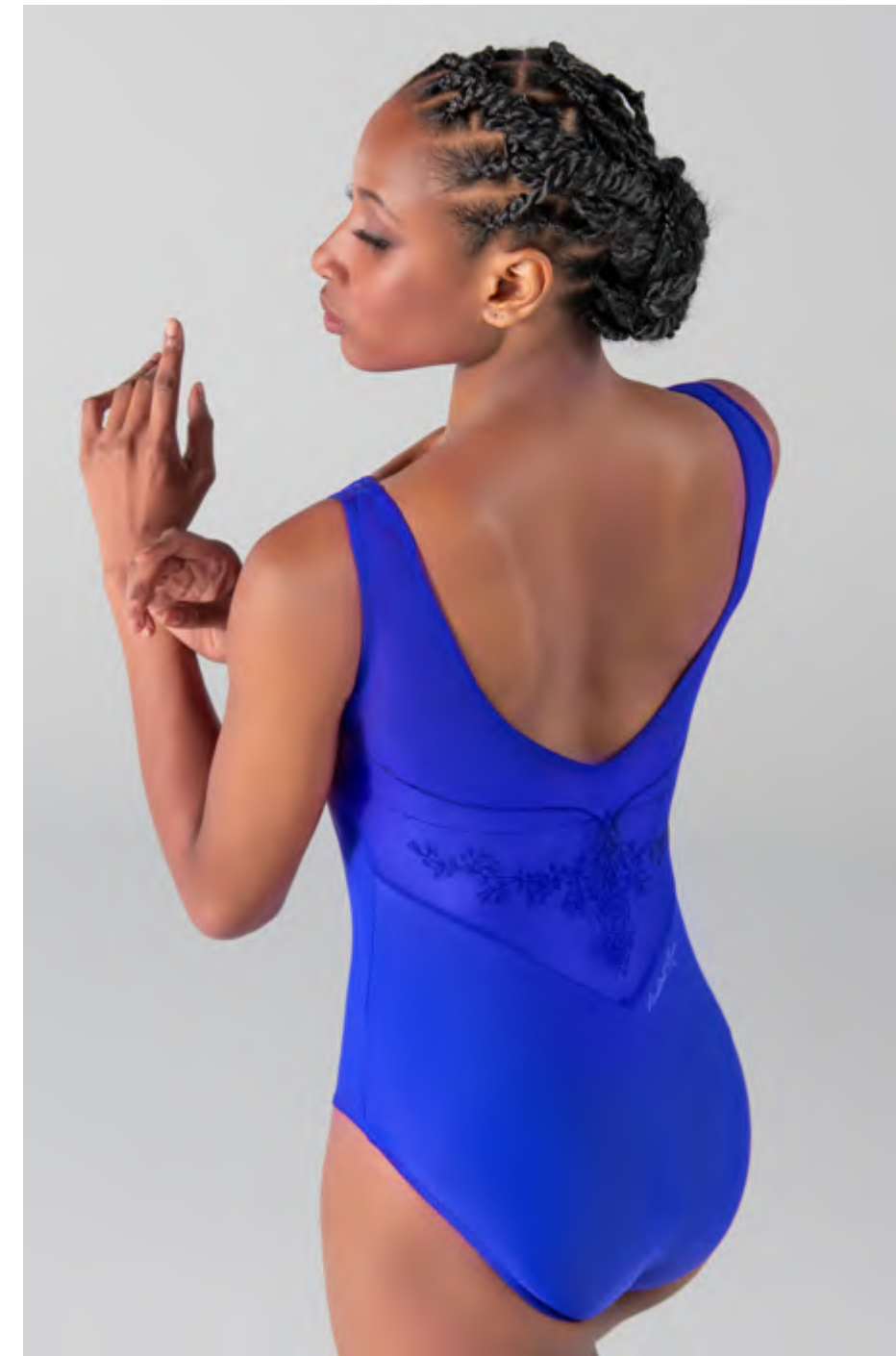
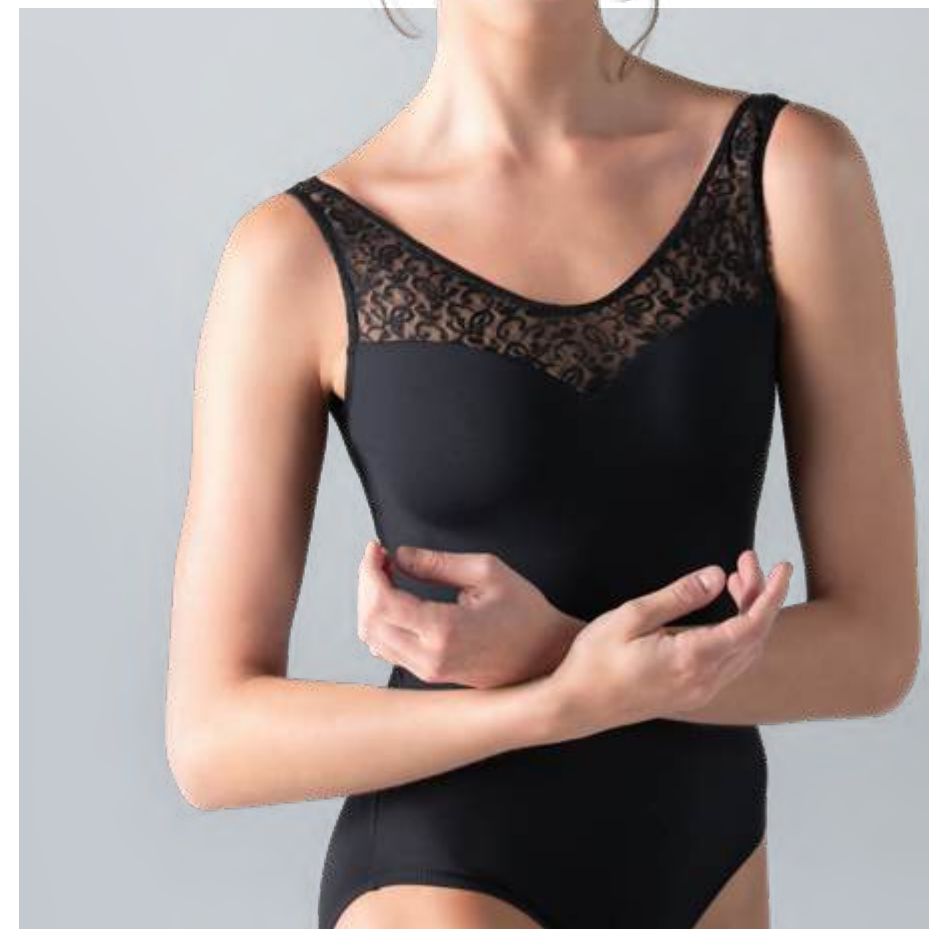
Adult 36/38 · 40/42 □ Youth 8/10 · 12/14
Noir · Royal · Bordeaux





Bohème

—
Adult 36 · 44 □ Youth 10 and 12
Noir · Bordeaux · Royal





Pictured skirt: *Pabia in Noir*

Chanel

Adult 36 › 44 □ Youth 10 and 12
Noir · Royal · Bordeaux





Pictured skirt: Skylar in Sedona



Moira

Adult 36 > 44 □ Youth 10 and 12
Sedona · Bordeaux · Noir · Royal

Autriche Collection

Exquisite Charm

Kayleigh wearing *Nouvel* in *Poudré*





Pictured skirts: *Ninette* in *Bordeaux* and *Skylar* in *Marine*

Bertille

—
Adult 36 · 44 □ Youth 10 and 12
Blanc · Royal · Bordeaux · Marine · Poudré · Noir · Sedona





Pictured skirt: Skylar in Poudre

Nouvel

Adult 36 - 44 □ Youth 10 and 12
 Bordeaux · Poudre · Sedona · Marine · Noir · Royal · Blanc





Emmeline

Adult 36 > 44 □ Youth 8 > 12
Bordeaux · Royal · Sedona · Marine · Blanc · Poudré · Noir



Berenice

Adult 36 › 44 □ Youth 8 › 12
Sedona · Noir · Blanc · Royal
Poudré · Bordeaux · Marine





Mirielle

Adult 36 - 44 □ Youth 10 and 12

Royal · Poudré · Blanc · Bordeaux · Sedona · Marine · Noir





Josephine

Adult 36 › 44 □ Youth 8 › 12

Blanc · Royal · Poudré · Bordeaux · Sedona · Marine · Noir





Alexine

Adult 36 > 44 □ Youth 10 and 12
Bordeaux · Poudré · Noir · Royal · Sedona · Marine · Blanc



Amélie

Adult 36 › 44 □ Youth 8 › 12

Bordeaux · Royal · Sedona · Blanc · Noir · Poudré · Marine





Alba

Adult 36 › 44 □ Youth 10 and 12
Bordeaux · Sedona · Blanc · Poudré · Noir · Marine · Royal

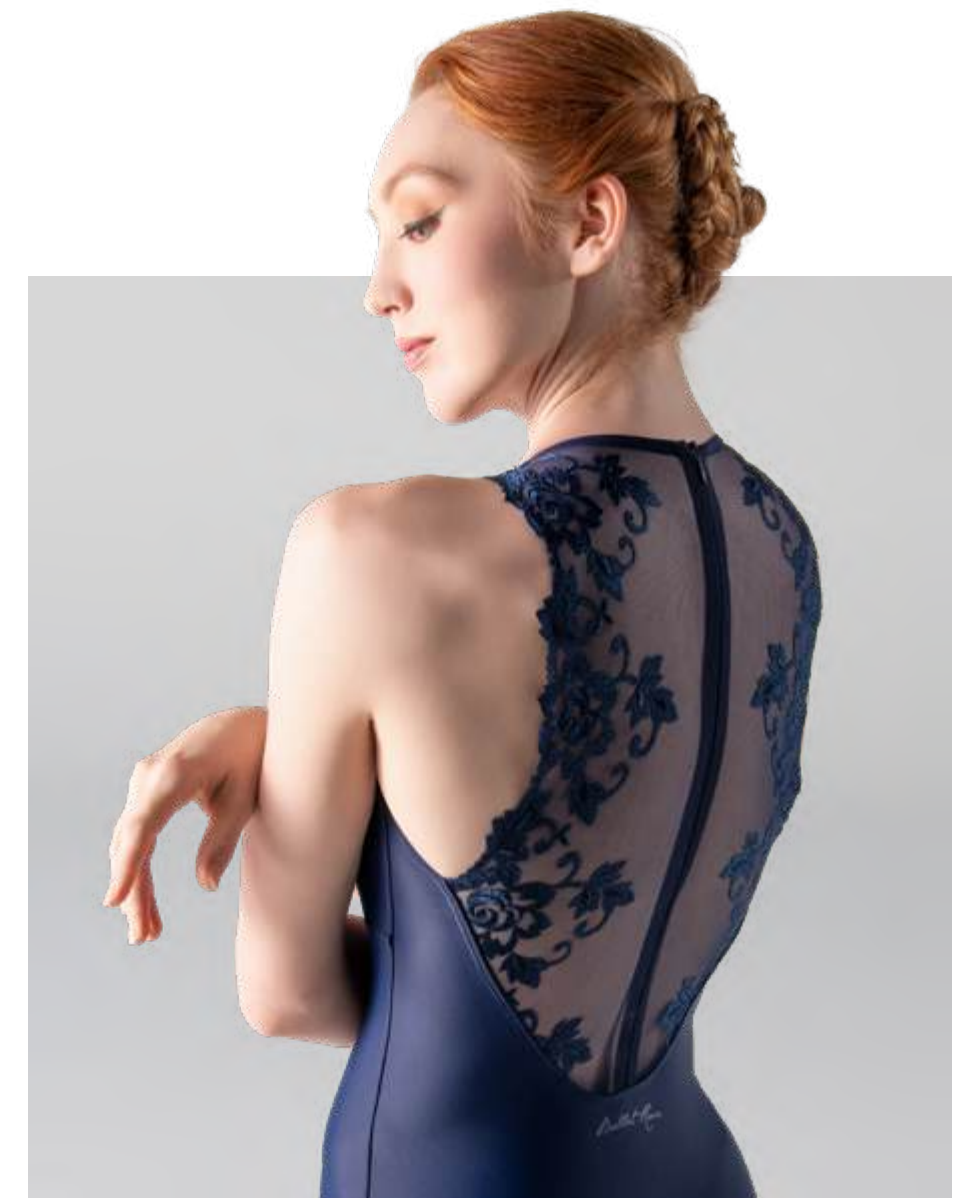




Esther

Adult 36 > 44 □ Youth 8 > 12

Noir · Poudré · Royal · Blanc · Sedona · Bordeaux · Marine





Lucienne

Adult 36 · 44 □ Youth 10 and 12
Sedona · Blanc · Noir · Marine · Royal · Poudré · Bordeaux



Imperiale Collection

Understated Beauty

Peyton wearing Evian in *Poudré with Blanc*





Pictured skirt: **Skyta** in *Sedona*

Chablis

—
Adult 36 - 44
Poudré · Noir · Sedona





Pictured skirt: *Ninette* in *Sedona*



Evian

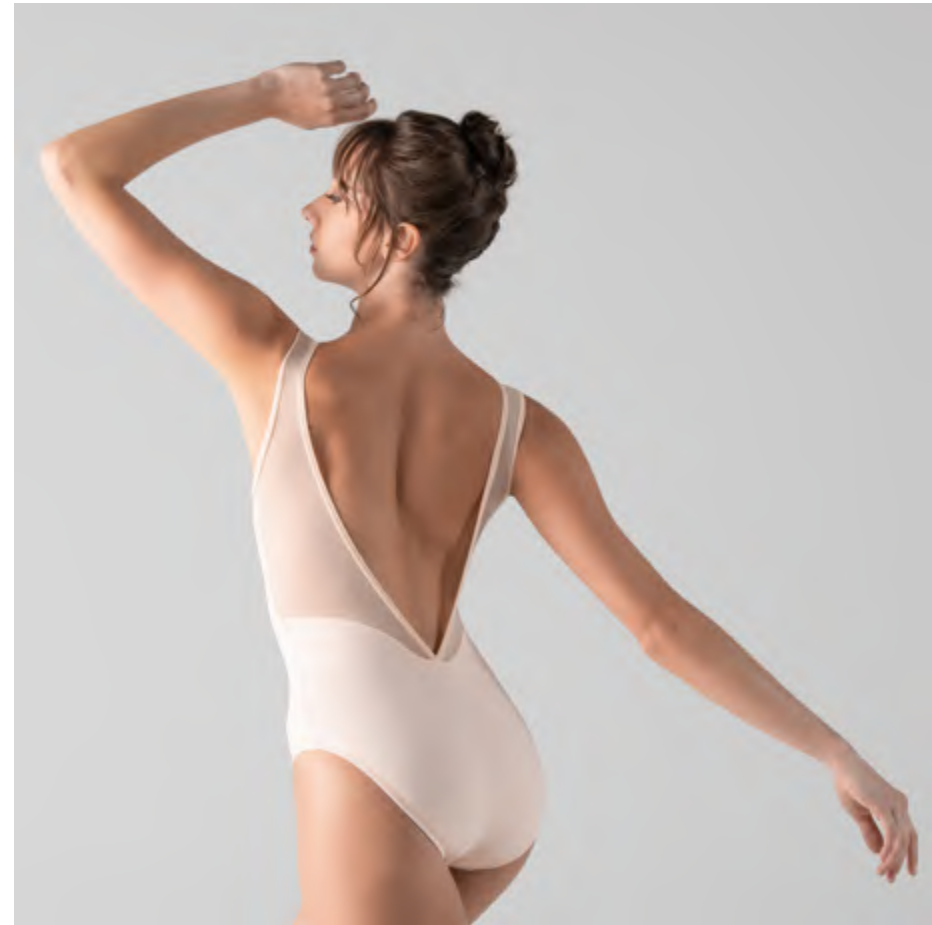
Adult 36 - 44
Noir · Poudré · Sedona



Pictured skirt: *Ninette* in *Noir*

Corbeau

Adult 36 - 44
Sedona · Noir · Poudré





Pictured skirt: *Mitie* in *Poudré*

Hilary



Adult 36 > 44
Noir · Sedona · Poudré

Fontainebleau *Collection*

Chic Refinement

Amanda wearing **Leblanc** in *Raspberry*





Meline



Adult 36 > 44
Raspberry · Noir



Pictured skirt: *Ninette* in *Noir*





Pictured skirt: Skylar in Noir

Marvelle

—
Adult 36 - 44
Noir · Raspberry





Rouge

Adult 36 - 44
Noir · Raspberry



Valera

Adult 36 · 44
Noir · Raspberry



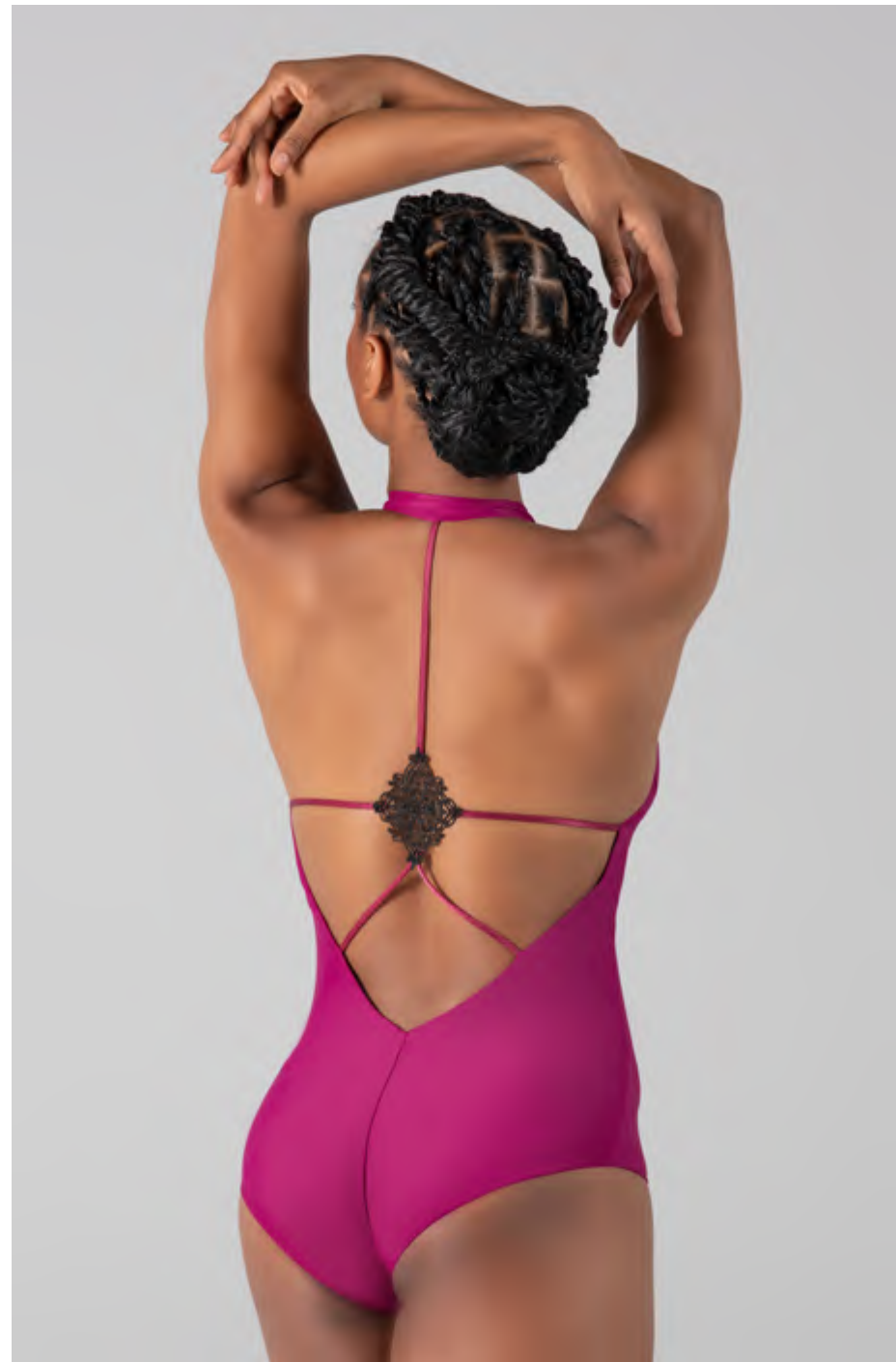
Via

Adult 36 · 44
Raspberry · Noir



Darra

Adult 36 > 44
Raspberry · Noir



Chaucer

Adult 36 > 44
Raspberry · Noir



Garnier *Collection*

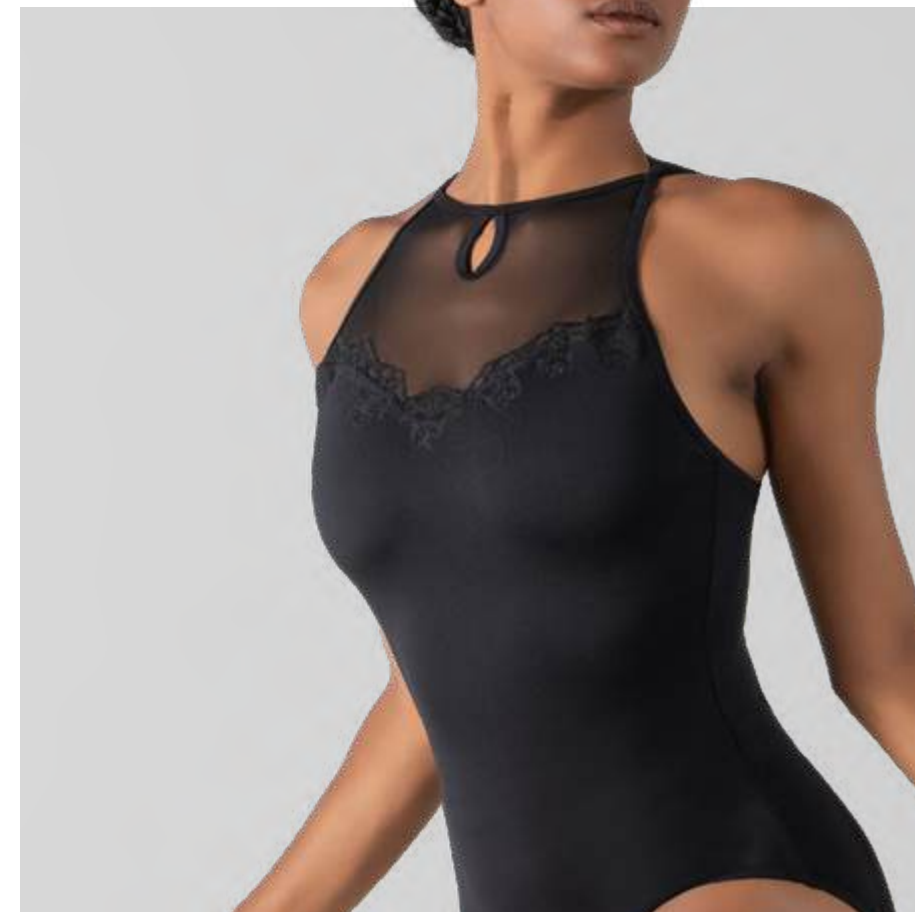
Vintage Polish

Salomé wearing **Danielle** in *Medium Orchid*





Danielle
—



Adult 36 > 44 □ Youth 10 and 12
Medium Orchid · Noir · Encre Bleu

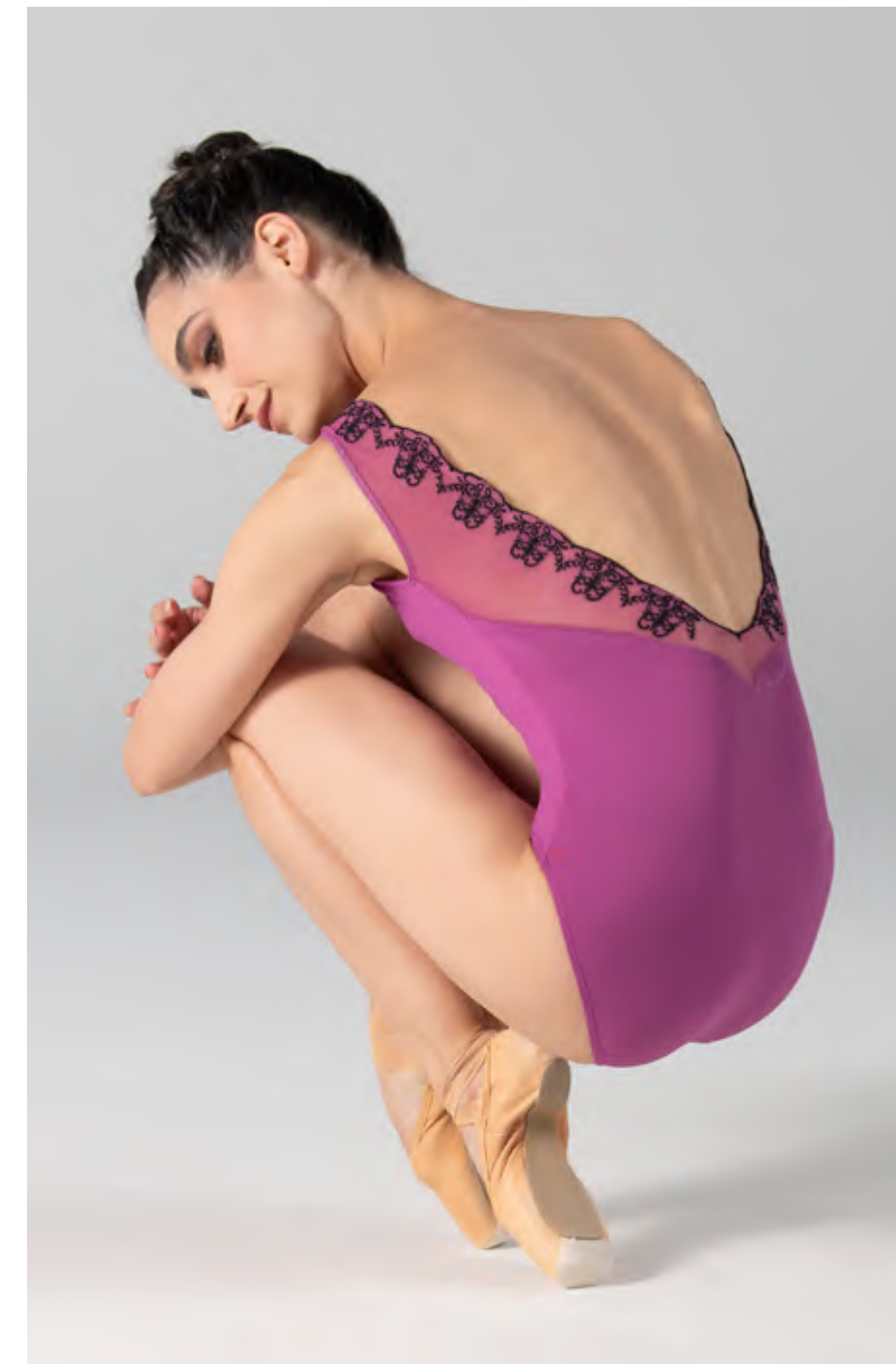
Denise

Adult 36 › 44 □ Youth 8 › 12
Medium Orchid · Noir · Encre Bleu



Lynn

Adult 36 › 44 □ Youth 8 › 12
Noir · Encre Bleu · Medium Orchid



Jacque

Adult 36 · 44
Youth 8 · 12
Medium Orchid
Noir · Encre Bleu

Pictured with Ivy skirts



Skirt

Ivy

Adult 36/38 · 40/42 □ Youth 8/10 · 12/14
Encre Bleu · Noir · Medium Orchid



Dentelle Collection

Delicate Artistry

Peyton wearing **Mollie** in *Olive*





Blandine

Adult 36 > 44 □ Youth 10 and 12
Olive · Noir · Gris · Marine · Wild Rose · Poudré · Blanc · Café au Lait





Pictured skirts: Ninette in *Blanc* and Skylar in *Gris*

Mollie

Adult 36 › 44 □ Youth 10 and 12

Poudré · Blanc · Gris · Marine · Noir · Wild Rose · Olive · Café au Lait

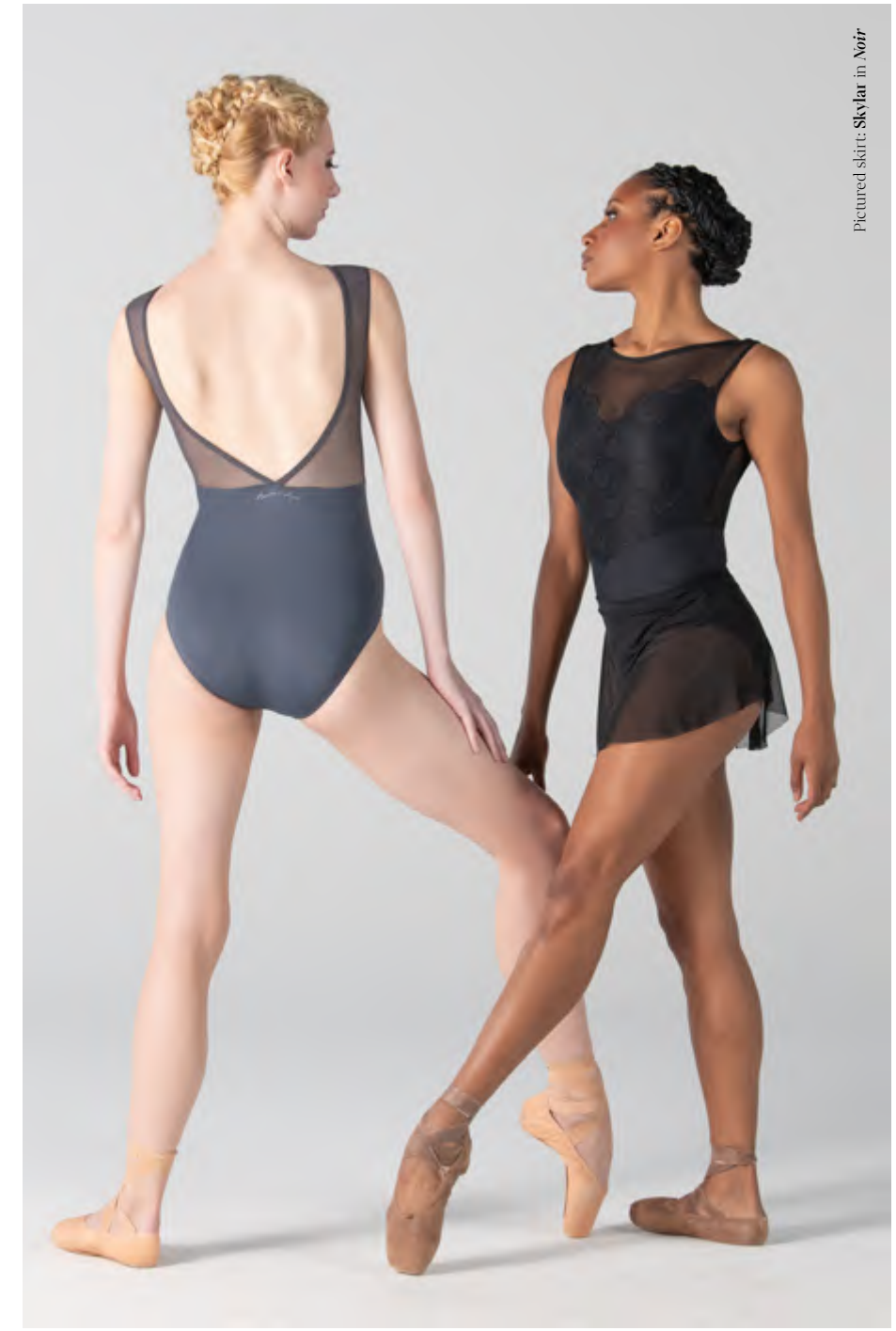
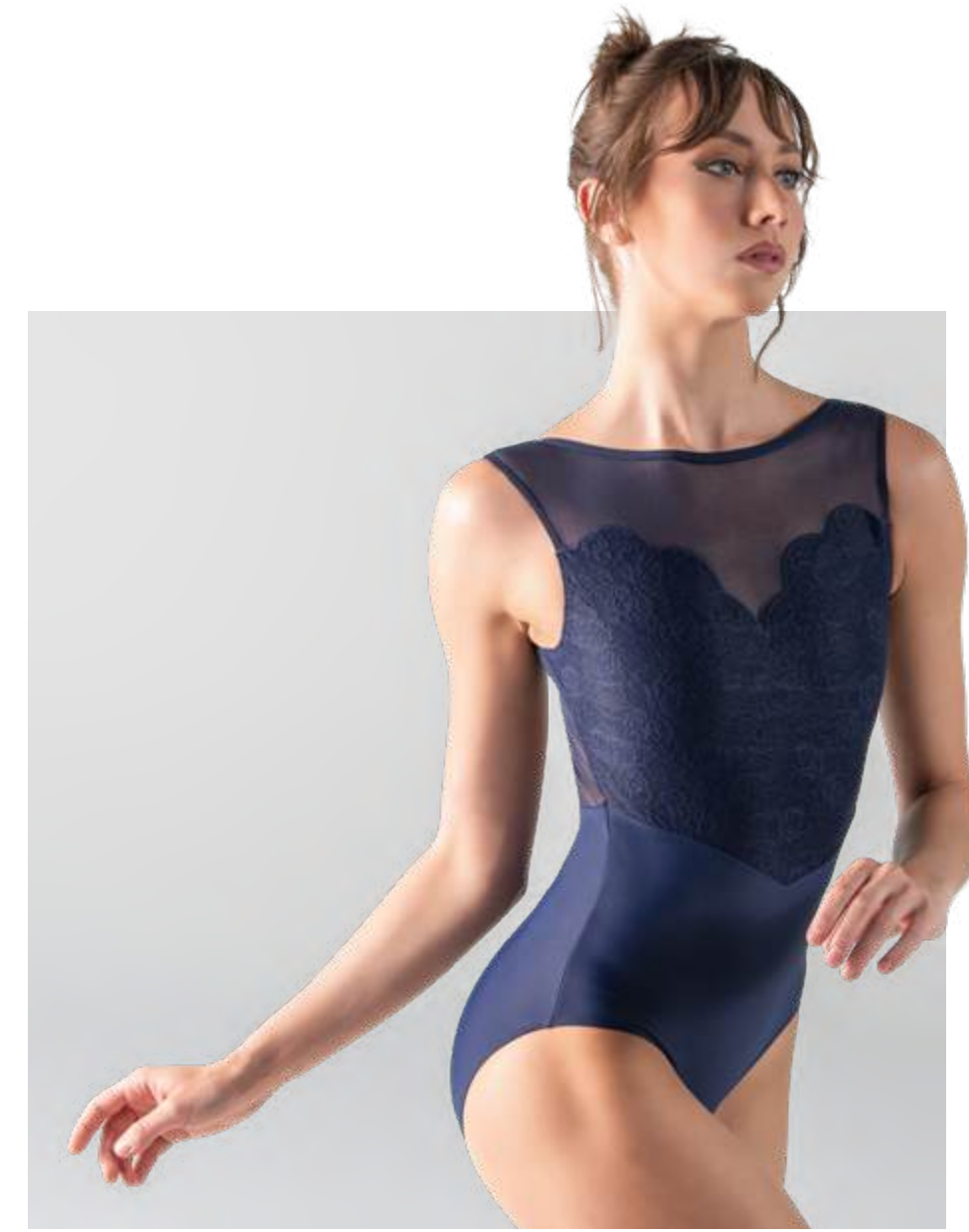




Pictured skirts: Millie in Wild Rose and Skylar in Blanc

Caprice

Adult 36 · 44 □ Youth 10 and 12
Wild Rose · Café au Lait · Olive · Poudré · Blanc · Marine · Gris · Noir



Pictured skirt: Skylar in Noir

Amari

Adult 36 · 44 □ Youth 10 and 12

Gris · Café au Lait · Noir · Poudré · Blanc · Olive · Wild Rose · Marine

Pictured skirts: *Erika* in *Noir*, *Millie* in *Poudré* and *Skylar* in *Marine*





Pictured skirts: Millie in *Olive* and Skylar in *Café au Lait*

Rita

Adult 36 · 44 □ Youth 10 and 12

Olive · Blanc · Noir · Café au Lait · Marine · Gris · Wild Rose · Poudré





Pictured skirts: Skylar in Wild Rose

Maeva

Adult 36 › 44 □ Youth 10 and 12
 Olive · Wild Rose · Noir · Gris · Blanc · Marine · Poudré · Café au Lait



Pictured skirts: Ninette in Café au Lait



Inaya

Adult 36 > 44 □ Youth 10 and 12

Blanc · Marine · Gris · Olive · Café au Lait · Poudré · Noir · Wild Rose



Versailles Collection

Charming Poise

Sirui wearing Arlette in *Noir with Rose*

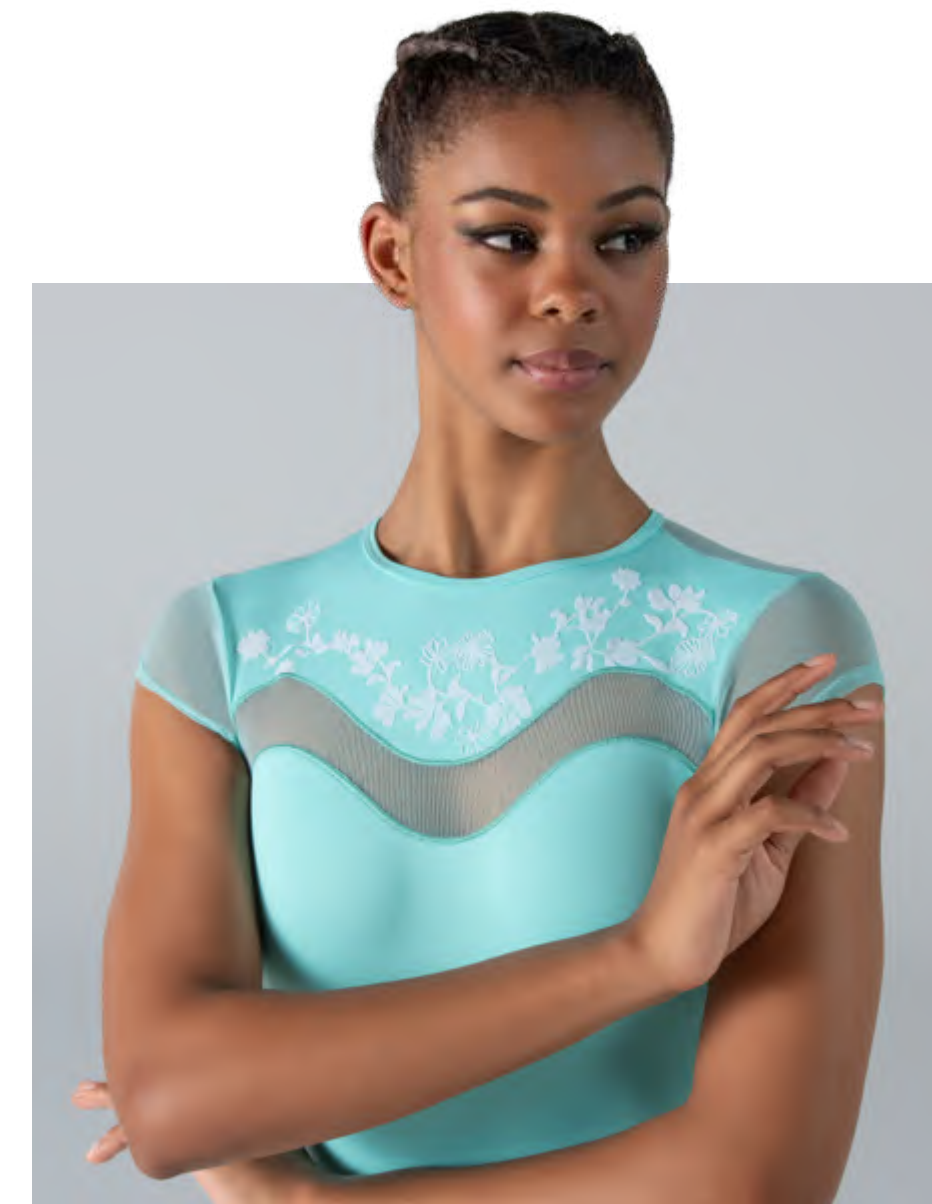




Arlette

Adult 36 - 44

Noir · Wild Rose with Ivory · Noir with Wild Rose · Aqua with Blanc · Blanc



Pictured skirts: Phoebe in *Wild Rose with Ivory* and Léonie in *Blanc with Blanc*



Pictured skirt: Phoebe in Aqua with Blanc

Adèle

Adult 36 › 44 □ Youth 10 and 12

Wild Rose with Ivory · Blanc

Aqua with Blanc · Noir

Noir with Wild Rose





Pictured leotards: Arlette in Blanc with Blanc · Adèle in Noir with Noir



Skirt

Phoebe

Adult 36/38 · 40/42 □ Youth 8/10 · 12/14

Blanc · Noir · Noir with Wild Rose · Wild Rose with Ivory · Aqua with Blanc

Skirt

Léonie

Adult 36/38 · 40/42 □ Youth 8/10 · 12/14

Wild Rose with Ivory · Aqua with Blanc · Blanc · Noir · Noir with Wild Rose



Pictured leotards: Adèle in Wild Rose with Ivory · Arlette in Aqua with Blanc

Tulle Collection

Luxurious Style

Nikita wearing **Licinia** in *Noir*





Licinia

—
Adult 36 > 44 □ Youth 10 and 12
Noir · Olive





Fontea

Adult 36 > 44 □ Youth 10 and 12
Olive · Noir



Pictured skirt: **Skylar** in **Noir**



Pictured skirt: Skylar in Olive

Deléon

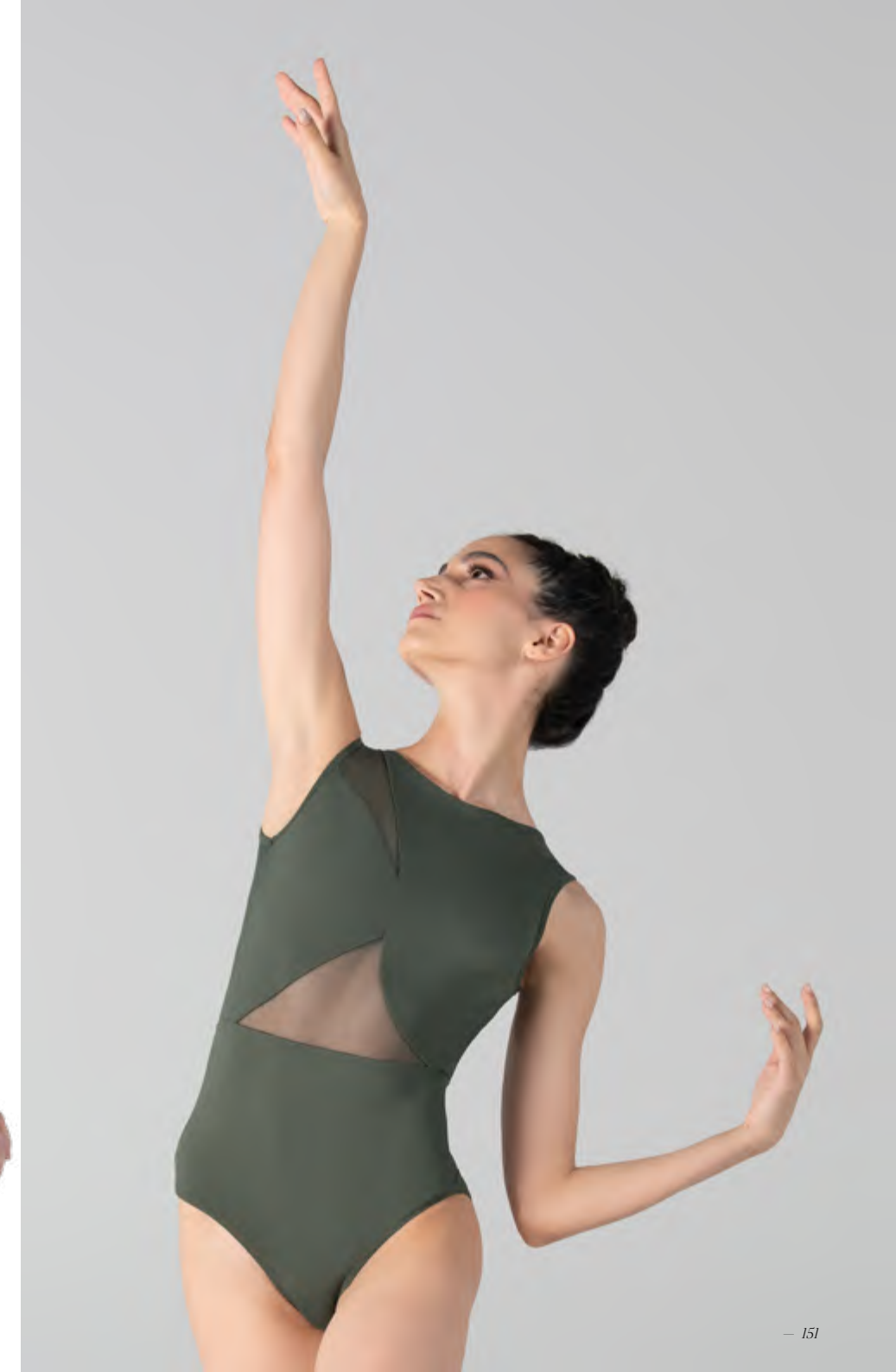
Adult 36 › 44 □ Youth 10 and 12
Noir · Olive





Orane

Adult 36 > 44 □ Youth 10 and 12
Noir · Olive





Hope

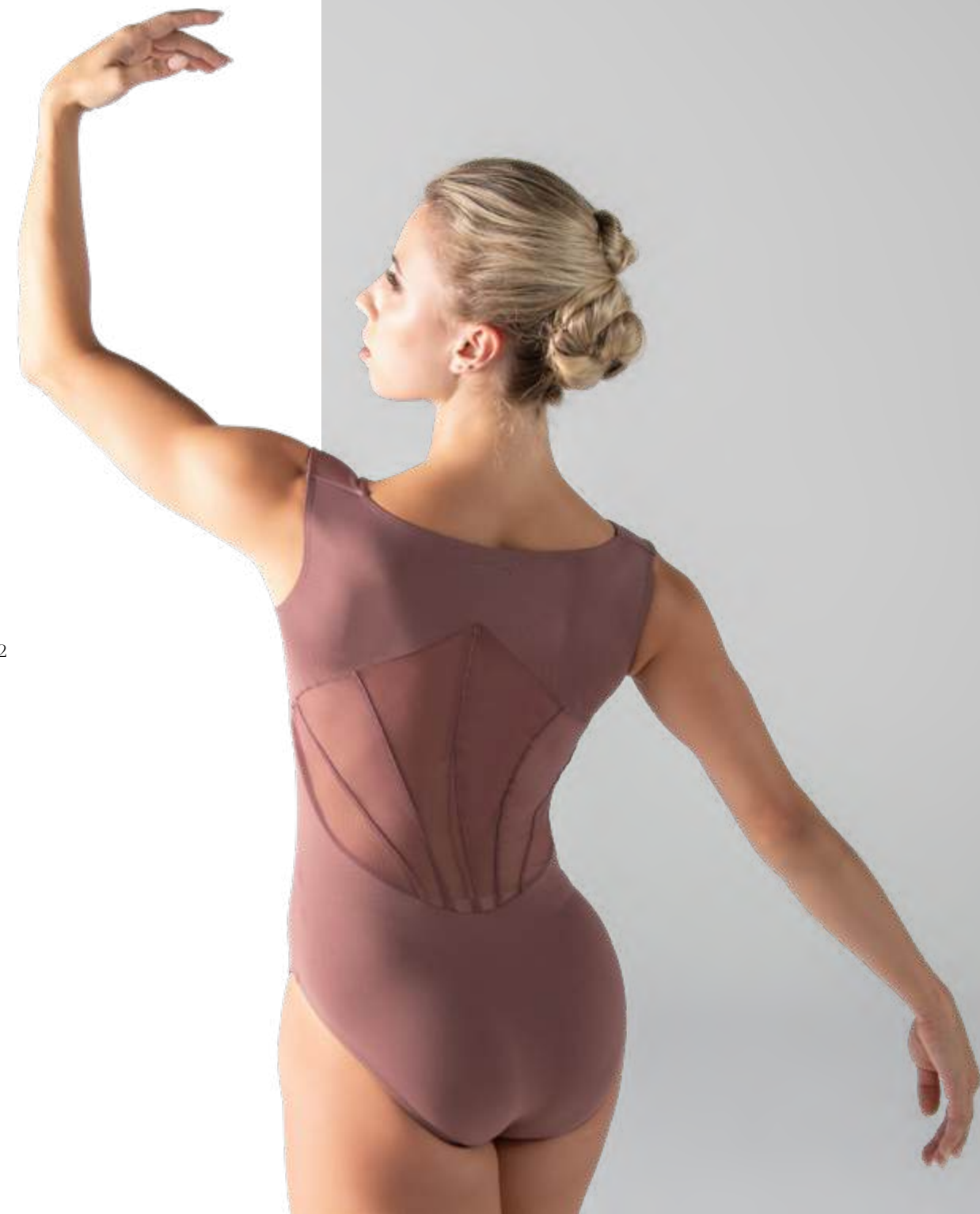


Adult 36 > 44 □ Youth 10 and 12
Wild Rose · Sedona · Noir



River

Adult 36 › 44 □ Youth 10 and 12
Sedona · Wild Rose · Noir





Nadège

Adult 36 > 44 □ Youth 10 and 12

Rojo · Blanc · Marine · Sedona · Royal · Noir · Bordeaux



Skirt

Erika

Adult 36/38 · 40/42

Youth 8/10 · 12/14

Pictured colors:

Calé au Lait · French Blue · Encre Bleu

Available in 26 colors

Please see index



Pictured leotards: *Bouvier* in *Wild Rose* · *Liana* in *Gris* · *Celestine* in *Teal*

Skirt

Skylar

Adult 36 · 44

Youth 6 · 12

Pictured colors:

Blanc · Viola · Ruby

Available in 26 colors

Please see index



Pictured leotards: *Nouvel* in *Noir* · *Fosette* in *Calé au Lait*



Skirt

Ninette

Adult 36/38 · 40/42
Youth 8/10 · 12/14

Pictured colors:
Aqua · Poudré

Available in 26 colors
Please see index



Skirt

Millie

Adult 36/38 · 40/42
Youth 8/10 · 12/14

Pictured colors:
Bordeaux · Marine · Orchidée

Available in 26 colors
Please see index



Fabia

Adult 36/38 · 40/42

Pictured colors:
Sedona · Noir
Wild Rose · Olive

Available in 26 colors.
Please see index.



Pictured leotards: Sossia in Sedona · Blandine in Café au Lait · Hope in Wild Rose · Bertille in Noir

Top

Natasha

Adult 36 · 44

Youth 6 · 12

Pictured colors:
Royal · Prunus · Gris

Available in 26 colors.
Please see index.



Pictured leotards: Kayla in Teal



Pictured leotards: Kayla in Medium Orchid · Kayla in Orchidée

Italienne *Collection*

Alluring Classics

Simone wearing **Sossia** in *Poppy*



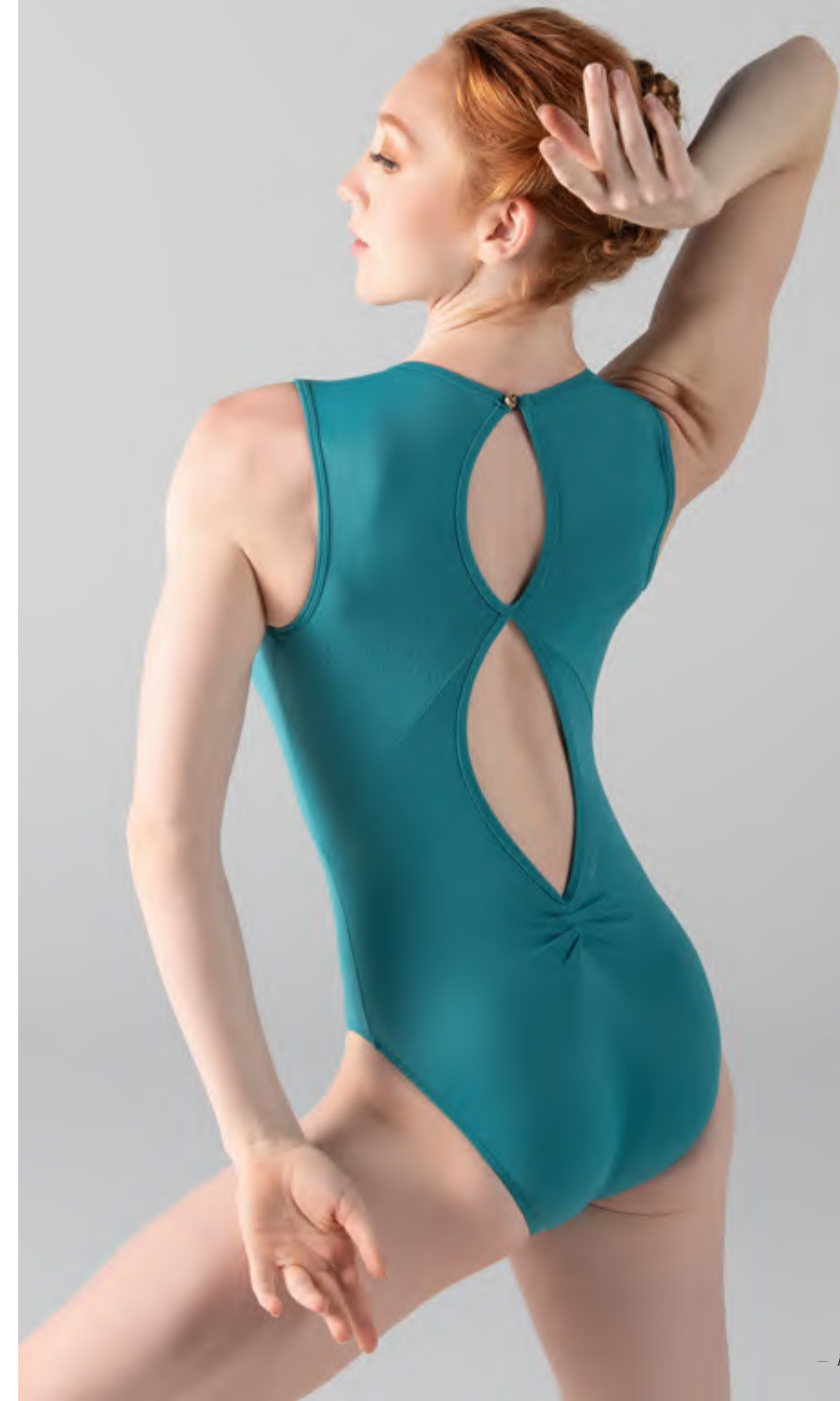


Sossia

Adult 36 - 44
Youth 10 and 12

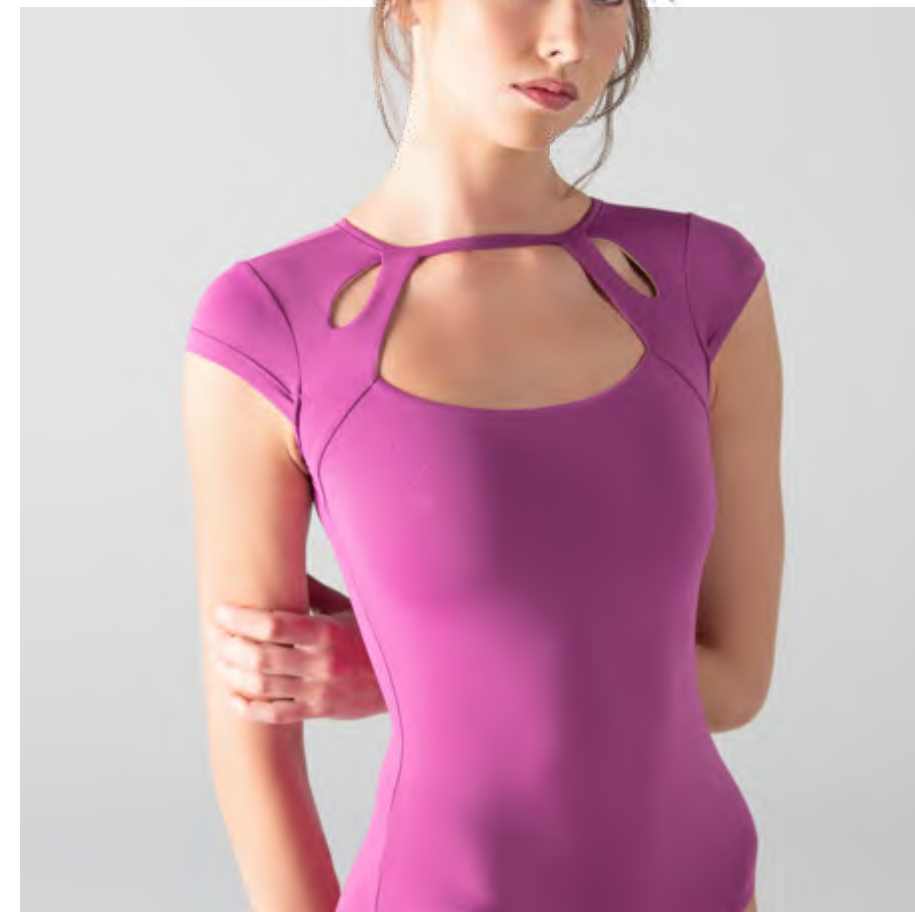
*Pictured colors:
Noir · Medium Orchid · Gris
French Blue · Teal*

*Available in 16 colors
Please see index*





Liana



Adult 36 > 44 □ Youth 10 and 12
Pictured colors: *Café au Lait · Blanc · Gris · Olive · Medium Orchid*
Available in 16 colors. Please see index.



Pictured skirt: Skylar in Ruby



Angeles

Adult 36 - 44
Youth 8 - 12

Pictured colors:
Poppy · Ruby · Café au Lait
Royal · Marine

Available in 16 colors
Please see index

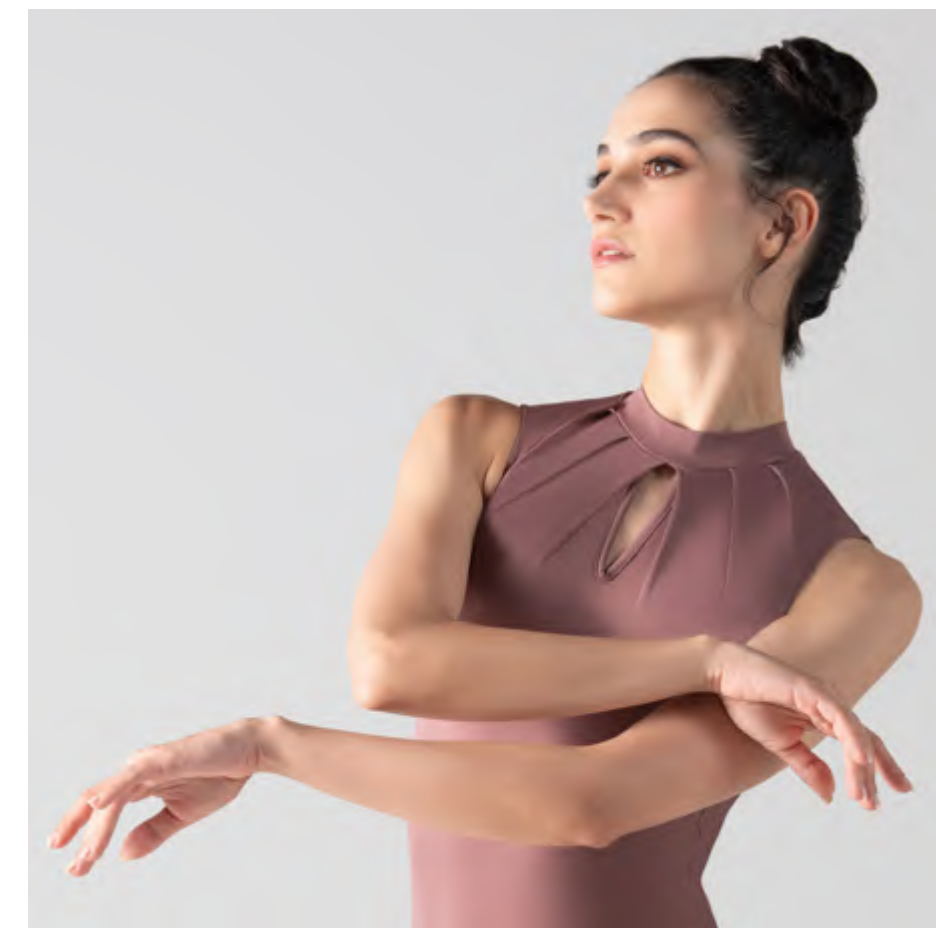


Celestine

Adult 36 - 44
Youth 10 and 12

Pictured colors:
Encre Bleu · Viola
Orchidée · Olive · Wild Rose

Available in 16 colors
Please see index





Kayla

Adult 36 > 44 □ Youth 8 > 12

*Pictured colors:
Viola · Ruby · Noir · Encre Bleu*

*Available in 16 colors
Please see index*



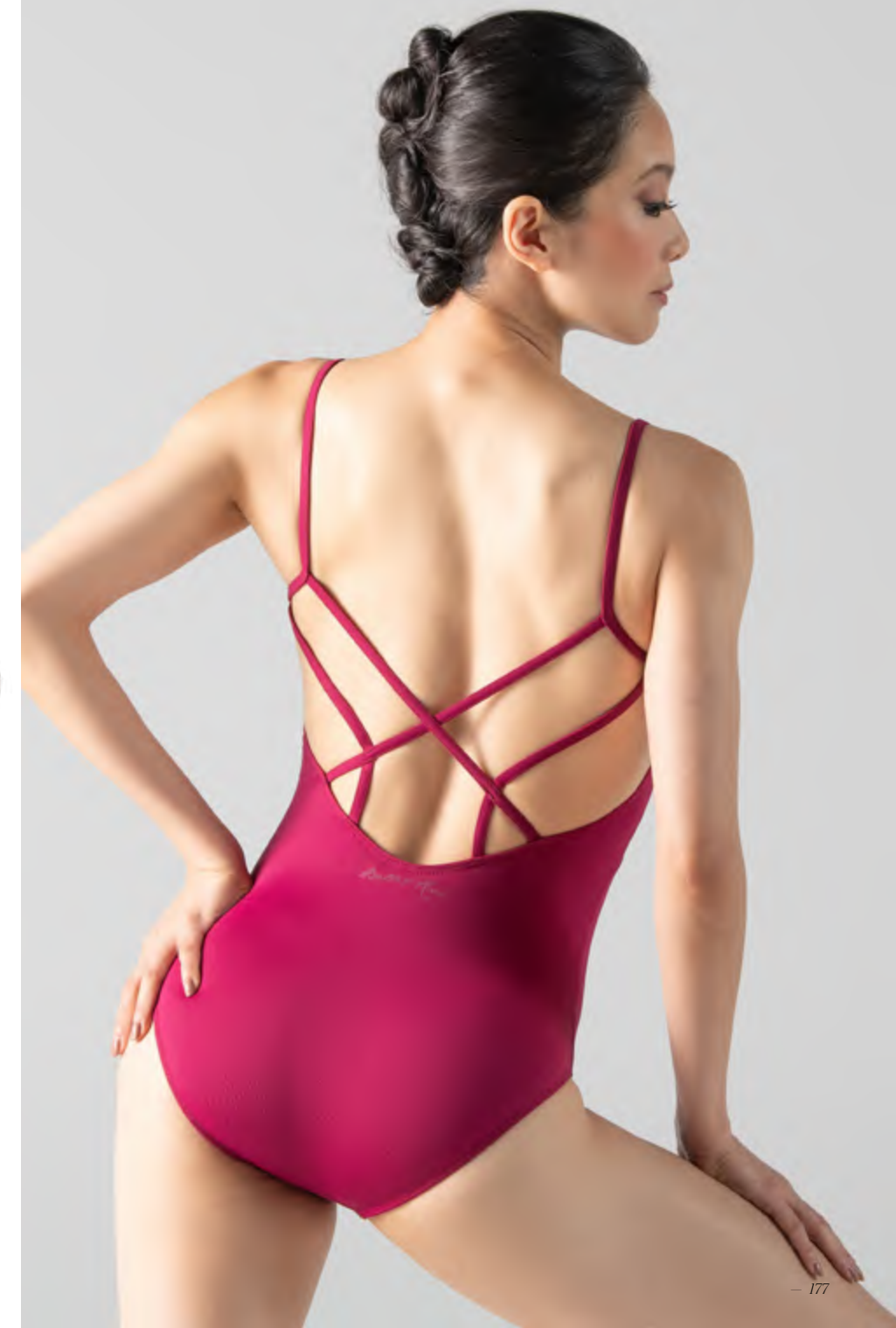


Audrey

Adult 36 - 44
Youth 10 and 12

*Pictured colors:
French Bleu · Royal · Teal
Marine · Wild Rose
Orchidée*

*Available in 16 colors
Please see index*



Bamboo Collection

Effortless Comfort

Nikita wearing **Mio** and **Sora** in *Nuit*





Pictured leonards: Angeles in Noir · Angeles in Ruby

Waterfall Cardigan

Etsu

—
Adult 36 · 44
Taupe · Noir · Nuit



Pictured leonards: Kavia in Gris

Top

Mio

Adult 36 - 44

Noir · Nuit



Pictured pants: Sora in Nuit · Ayana in Noir

Top

Kimi

Adult 36 - 44

Noir · Nuit



Pictured shorts: Nobu in Nuit · Nobu in Noir



Pictured pants: Sora in Noir

Top

Megumi

Adult 36 > 44
Noir · Nuit · Taupe



Pictured shorts: Nobu in Nuit · Nobu in Noir



Pictured pants: Ayana in Noir · Sora in Nuit

Top

Ichika

Adult 36 > 44
Nuit · Taupe · Noir



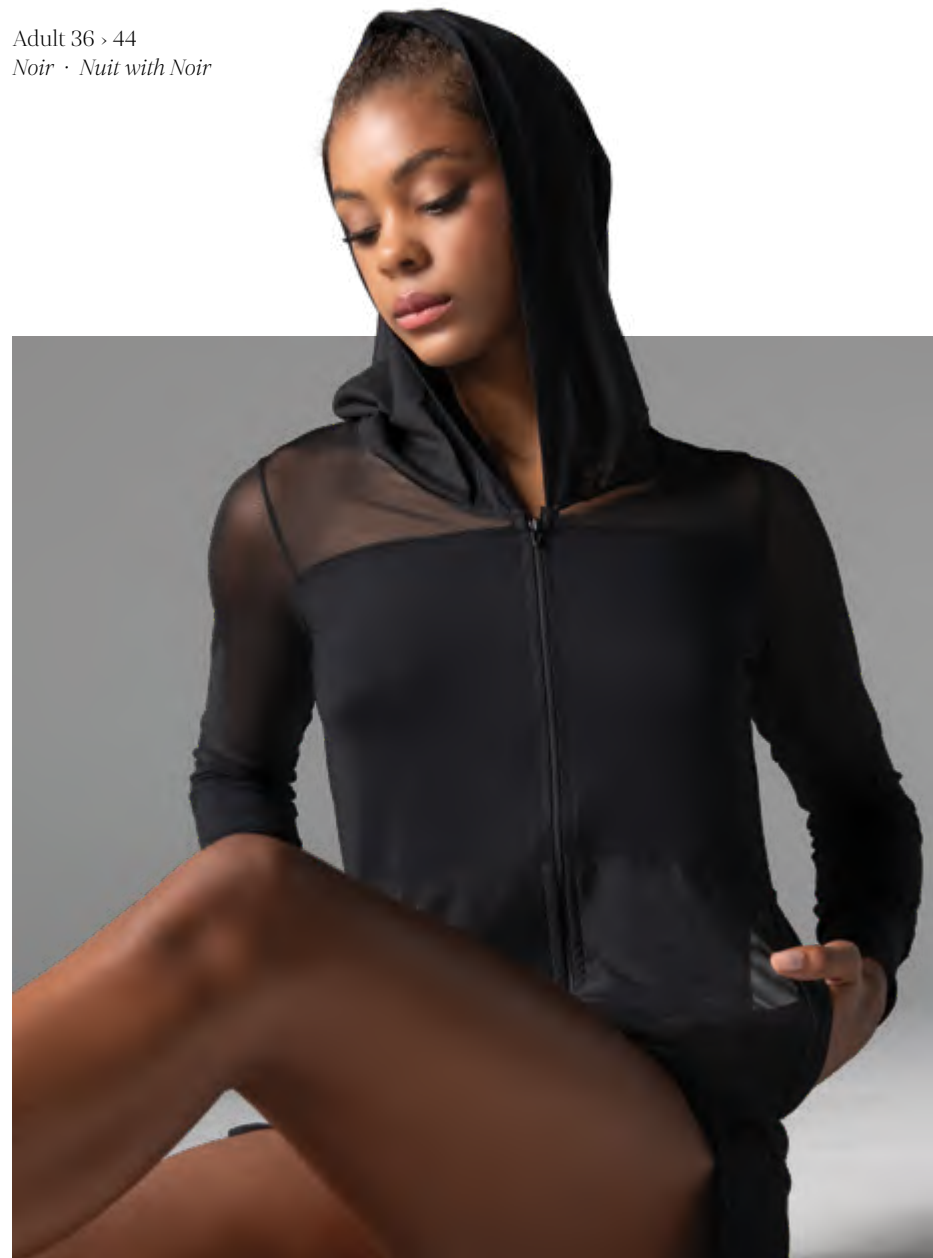
Pictured shorts: Nobu in Noir · Nobu in Nuit

Hoodie

Midori

Adult 36 > 44

Noir · Nuit with Noir



Hoodie

Ren

Adult 36 > 44

Nuit · Noir

Pictured with: Nobu in Nuit · Sora in Nuit · Ayana in Noir

Romper

Kaiko

Adult 36 - 44

Bleu Prusse · Noir · Nuit



Jumpsuit

Yume

Adult 36 - 44

Noir · Bleu Prusse · Nuit



Romper

Fuki

Adult 36 - 44

Noir · Taupe · Nuit



Shorts

Nobu

Adult 36 - 44

Noir · Nuit · Blanc



Pictured leotards: Kayla in Gris · Liama in Olive



Pants

Sora

Adult 36 > 44
Noir · Nuit



Pants

Ayana

Adult 36 > 44
Noir · Nuit



Index

☆ NEW PRODUCT

👉 NEW COLORS / Marked in Bold

ACADIA
36 > 44
P. 33



Chantilly Collection
High Neck Motif Tank Open Back Leotard
Microfiber with Embroidery Laser Cut on Stretch Mesh

Noir 01

👉

ADÉLE
36 > 44
10 - 12
P. 139



Versailles Collection
Pinch Back Tank Leotard
Microfiber with Velour Print and Stretch Mesh

Noir
Blanc
Noir with Wild Rose
Aqua with Blanc
Wild Rose with Ivory

👉

ALBA
36 > 44
10 - 12
P. 81



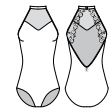
Autriche Collection
Camisole Strap Keyhole Back Lace Embroidered Mesh Leotard
Matte Lycra with Austrian Lace Embroidered Mesh

Bordeaux 26
Poudré 60
Sedona 107

Noir 01
Blanc 02
Marine 07
Royal 16

👉

ALEXINE
36 > 44
10 - 12
P. 77



Autriche Collection
High Neck Leotard with Lace Framed Back
Matte Lycra with Austrian Lace Embroidered Mesh

Bordeaux 26
Poudré 60
Sedona 107

Noir 01
Blanc 02
Marine 07
Royal 16

👉

AMARI
36 > 44
10 - 12
P. 127



Dentelle Collection
Sweetheart Lace Front Open Back Leotard
Microfiber or Matte Lycra with Lace

Gris 47
Café au Lait 72
Olive 89
Wild Rose 105

Microfiber

Noir 01
Blanc 02
Marine 07
Poudré 60

Matte Lycra

👉

AMÉLIE
36 > 44
8 > 12
P. 79



Autriche Collection
High Neck Open Back Leotard
Matte Lycra with Austrian Lace Embroidered Mesh

Bordeaux 26
Poudré 60
Sedona 107

Noir 01
Blanc 02
Marine 07
Royal 16

👉

ANGELES
36 > 44
8 > 12
P. 171



Italienne Collection
V-Neck Open Back Leotard
Microfiber

Olive 89
French Blue 95
Medium Orchid 96
Wild Rose 105

Café au Lait 72
Viola 73
Teal 74
Encre Bleu 77
Ruby 82
Poppy 84

Noir 01
Blanc 02
Marine 07
Orchidée 13
Royal 16
Gris 47

☆

ANOUK
36 > 44
8 > 12
P. 17



Louvre Collection
V-Front Half Sleeve Open Back Leotard
Microfiber or Matt Lycra with Embroidered Stretch Mesh

Aqua 15
Encre Bleu 77
Olive 89
Sedona 107

☆

ANTONIA
36 > 44
8 > 12
P. 15



Louvre Collection
Boatneck Low V-Back Tank Leotard
Microfiber or Matt Lycra with Embroidered Stretch Mesh

Aqua 15
Encre Bleu 77
Olive 89
Sedona 107

☆

ARLETTE
36 > 44
P. 137



Versailles Collection
Crewneck Mock Sweetheart Neckline Open Back Cap Sleeve Leotard
Microfiber with Velour Print and Stretch Mesh

Noir
Blanc
Noir with Wild Rose
Aqua with Blanc
Wild Rose with Ivory

AUDREY

36 > 44
10 - 12
P. 177



Italienne Collection
Princess Seam Strappy Back
Camisole Leotard
Microfiber

Olive 89
French Blue 95
Medium Orchid 96
Wild Rose 105

Café au Lait 72
Viola 73
Teal 74
Encre Bleu 77
Ruby 82
Poppy 84

Noir 01
Blanc 02
Marine 07
Orchidée 13
Royal 16
Gris 47

👉

AVIGNON
36 > 44
P. 35



Chantilly Collection
Mock Sweetheart Neckline Sequin Embroidered Tank Leotard
Microfiber with Embroidery Sequin on Stretch Mesh

Noir 01
Wild Rose 105

☆

AXELLE
36 > 44
P. 29

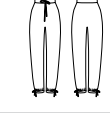


Chantilly Collection
Straight Front Low Scoop Back Tank Leotard
Microfiber with Embroidery

Noir 01
Wild Rose 105

👉

AYANA
36 > 44
P. 193

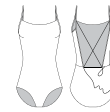


Bamboo Collection
Drawstring Waist and Adjustable Leg Pants
Stretch Bamboo

Noir 01
Nuit 62

☆

BARRAT
36 > 44
P. 43

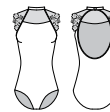


La Cité Collection
Scoop Front Low Cross Back Camisole Leotard
Matte Lycra with Self Fabric Embroidery

Noir with Blanc
Sedona with Noir

👉

BERENICE
36 > 44
8 > 12
P. 71



Autriche Collection
High Neck Open Round Back Leotard
Matte Lycra with Austrian Lace Embroidered Mesh

Bordeaux 26
Poudré 60
Sedona 107

Noir 01
Blanc 02
Marine 07
Royal 16

☆

BERTILLE
36 > 44
10 - 12
P. 65



Autriche Collection
Low V-Front V-Back Tank Leotard
Matte Lycra with Austrian Lace Embroidered Mesh

Bordeaux 26
Poudré 60
Sedona 107

Noir 01
Blanc 02
Marine 07
Royal 16

☆

BLANDINE
36 > 44
10 - 12
P. 121



Dentelle Collection
Scoop Front Teardrop Back Tank Leotard
Microfiber or Matte Lycra with Lace

Gris 47
Café au Lait 72
Olive 89
Wild Rose 105

Microfiber

Noir 01
Blanc 02
Marine 07
Poudré 60

Matte Lycra

👉

BOHÈME
36 > 44
10 - 12
P. 57

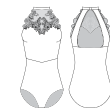


Vincennes Collection
Lace Mock Sweetheart Neckline Mid-Back Leotard
Matte Lycra with Lace and Embroidered Mesh

Noir 01
Royal 16
Bordeaux 26

👉

BOUVIER
36 > 44
P. 37



Chantilly Collection
High Neck Leotard with Front Motif Open Back Leotard
Microfiber with Stretch Mesh

Noir 01
Wild Rose 105

☆

BRAQUE
36 > 44
P. 45



La Cité Collection
Scoop Front Mid Scoop Back Camisole Leotard
Matte Lycra with Self Fabric Embroidery

Noir with Blanc
Sedona with Noir

CAPRICE

36 > 44
10 - 12
P. 125



Dentelle Collection
Crewneck Mock Sweetheart Lace Front V-Back Leotard
Microfiber or Matte Lycra with Lace and Stretch Mesh

Gris 47
Café au Lait 72
Olive 89
Wild Rose 105

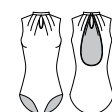
Microfiber

Noir 01
Blanc 02
Marine 07
Poudré 60

Matte Lycra

👉

CELESTINE
36 > 44
10 - 12
P. 173



Italienne Collection
Star Neckline Open Back Leotard
Microfiber

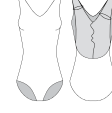
Olive 89
French Blue 95
Medium Orchid 96
Wild Rose 105

Café au Lait 72
Viola 73
Teal 74
Encre Bleu 77
Ruby 82
Poppy 84

Noir 01
Blanc 02
Marine 07
Orchidée 13
Royal 16
Gris 47

☆

CEZANNE
36 > 44
P. 41



La Cité Collection
V-front Mesh Back Tank Leotard
Matte Lycra with Self Fabric Embroidery

Noir with Blanc
Sedona with Noir

👉

CHABLIS
36 > 44
P. 89



Imperiale Collection
Zip Front Flock Motif Full Back Leotard
Matte Lycra with Velour Print

Noir 01
Poudré 60
Sedona 107

👉

CHANEL
36 > 44
10 - 12
P. 59

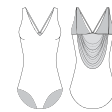


Vincennes Collection
Embellished Embroidery High Neck Half Sleeve Leotard
Matte Lycra with Lace and Embroidered Stretch Mesh

Noir 01
Royal 16
Bordeaux 26

👉

CHAUCER
36 > 44
P. 109



Fontainebleau Collection
V-Front Strappy Back Mesh Motif Leotard
Matte Lycra with Embroidery Over Stretch Mesh

Noir 01
Raspberry 104

☆

CORALIE
36 > 44
8 > 12
P. 19



Louvre Collection
Boatneck V-Back Short Sleeve Leotard
Microfiber or Matt Lycra with Embroidered Stretch Mesh

Aqua 15
Encre Bleu 77
Olive 89
Sedona 107

👉

CORBEAU
36 > 44
P. 93

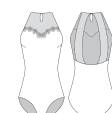


Imperiale Collection
Flock Motif Mock Sweetheart Front Low Back Leotard
Matte Lycra with Velour Print and Stretch Mesh

Noir 01
Poudré 60
Sedona 107

☆

DANIELLE
36 > 44
10 - 12
P. 113

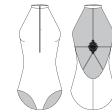


Garnier Collection
High Neck Mock Sweetheart Neckline Mid-Back Leotard
Microfiber with Laser Embroidery Mesh

Noir 01
Encre Bleu 77
Medium Orchid 96

👉

DARRA
36 > 44
P. 108



Fontainebleau Collection
Zip Front High Neck Embroidered Insert Leotard
Matte Lycra with Embroidered Detail and Spaghetti Elastic

Noir 01
Raspberry 104

👉

DELÉON
36 > 44
10 - 12
P. 149



Tulle Collection
Crewneck Mesh Cut Out Open Back Leotard
Microfiber with Stretch Mesh

Noir 01
Olive 89

☆ NEW PRODUCT

👉 NEW COLORS / Marked in Bold

Index

👉

DELIA
36 > 44
10 - 12
P. 51



Vincennes Collection
Triple Keyhole Lace Overlay Tank Leotard with Mesh Side Panels
Matte Lycra with Lace and Stretch Mesh

Noir 01
Royal 16
Bordeaux 26
Sedona 107

👉

DENISE
36 > 44
8 > 12
P. 114



Garnier Collection
Embroidered Mesh Cap Sleeve Leotard
Microfiber with Laser Embroidery Mesh

Noir 01
Encre Bleu 77
Medium Orchid 96

☆

DORIANE
36 > 44
8 - 12
P. 13

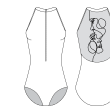


Louvre Collection
Pinch Front Cap sleeve Mid-Back Leotard
Microfiber or Matt Lycra with Embroidered Stretch Mesh

Aqua 15
Encre Bleu 77
Olive 89
Sedona 107

☆

DUVAL
36 > 44
P. 47

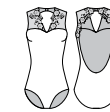


La Cité Collection
High Neck Zip Front Mesh Back Leotard
Matte Lycra with Self Fabric Embroidery

Noir with Blanc
Sedona with Noir

👉

EMMELINE
36 > 44
8 > 12
P. 69



Autriche Collection
V-Neck Open Back Leotard
Matte Lycra with Austrian Lace Embroidered Mesh

Bordeaux 26
Poudré 60
Sedona 107

Noir 01
Blanc 02
Marine 07
Royal 16

👉

ERIKA
36/38 - 40/42
8/10 - 12/14
P. 158



Tulle Collection
Mid-Length High-Low Pull On Skirt
Stretch Mesh

Buttercup 94
Café au Lait 72
Viola 73
Teal 74
Encre Bleu 77
Ruby 82
Olive 89

Poudré 60
Café au Lait 72
Viola 73
Teal 74
Encre Bleu 77
Ruby 82
Olive 89

Orchidée 13
Aqua 15
Royal 16
Rajo 17
Lagon 23
Bordeaux 26
Gris 47

Noir 01
Blanc 02
Rose 03
Ciel 04
Marine 07
Prunus 08
Parme 12

👉

ESTHER
36 > 44
8 > 12
P. 83



Autriche Collection
Pinch Front Zip Back Leotard with Bra Pad Insert Opening
Matte Lycra with Austrian Lace Embroidered Mesh

Bordeaux 26
Poudré 60
Sedona 107

Noir 01
Blanc 02
Marine 07
Royal 16

👉

Index

☆ NEW PRODUCT ● NEW COLORS / Marked in Bold


☆ **FABIA** 36/38 - 40/42 P. 162



Tulle Collection
Asymmetrical Hem 3/4 Length
Pull on Skirt with Seam Detailing
Stretch Mesh

Buttercup 94	Poudré 60	Orchidée 13	Noir 01
French Blue 95	Café au Lait 72	Aqua 15	Blanc 02
Medium Orchid 96	Viola 73	Royal 16	Rose 03
Wild Rose 105	Teal 74	Royal 17	Ciel 04
Sedona 107	Encre Bleu 77	Lagon 23	Marine 07
	Ruby 82	Bordeaux 26	Prunus 08
	Olive 89	Gris 47	Parme 12

☆ **FANTINE** 36 > 44 10 - 12 P. 11



Louvre Collection
Pinch Front Low Back Tank Leotard
Microfiber or Matt Lycra with Embroidered Stretch Mesh

Aqua 15
Encre Bleu 77
Olive 89
Sedona 107


☆ **FONTEA** 36 > 44 10 - 12 P. 147



Tulle Collection
Boatneck Asymmetrical Cut 3/4 Sleeve V-Back Leotard
Microfiber with Stretch Mesh

Noir 01
Olive 89


FUKI 36 > 44 P. 190



Bamboo Collection
V-Front Low Back Romper
Lightweight Bamboo

Noir 01
Nuit 62
Taupe 63

☆ **GAELE** 36 > 44 P. 27



Chantilly Collection
Crew Neck Mock Sweetheart Neckline Tank Leotard
Microfiber with Embroidery Sequin on Stretch Mesh

Noir 01
Wild Rose 105


● **HILARY** 36 > 44 P. 95



Imperiale Collection
Low Back Embroidered Mesh Boatneck Tank Leotard
Matte Lycra with Velour Print and Stretch Mesh

Noir 01
Poudré 60
Sedona 107

● **HOPE** 36 > 44 10 - 12 P. 153



Tulle Collection
V-Front Wide Gathered Cross Strap Leotard
Microfiber or Matte Lycra with Stretch Mesh

Noir 01	Microfiber	Sedona 107	Matte lycra
Wild Rose 105			


ICHIKA 36 > 44 P. 185



Bamboo Collection
Long Sleeve Adjustable Ruche Cropped Top
Stretch Bamboo

Noir 01
Nuit 62
Taupe 63

● **INAYA** 36 > 44 10 - 12 P. 133



Dentelle Collection
Pinch Front Scoop Back Tank Leotard
Microfiber or Matte Lycra with Lace

Gris 47	Microfiber	Noir 01	Matte lycra
Café au Lait 72		Blanc 02	
Olive 89		Marine 07	
Wild Rose 105		Poudré 60	

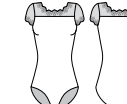
● **IVY** 36/38 - 40/42 8/10 - 12/14 P. 117



Garnier Collection
Embroidered Hem Mesh Pull On Skirt
Microfiber with Laser Embroidery Mesh

Noir 01
Encre Bleu 77
Medium Orchid 96


JACQUIE 36 > 44 8 > 12 P. 116



Garnier Collection
Square Front and Back Embroidered Mesh Neckline Cap Sleeve Leotard
Microfiber with Laser Embroidery Mesh

Noir 01
Encre Bleu 77
Medium Orchid 96

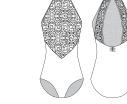
● **JOSEPHINE** 36 > 44 8 > 12 P. 75



Autriche Collection
Cap Sleeve Low Back Leotard
Matte Lycra with Austrian Lace Embroidered Mesh

Bordeaux 26	Noir 01
Poudré 60	Blanc 02
Sedona 107	Marine 07
	Royal 16

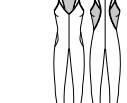
● **JOURDAIN** 36 > 44 10 - 12 P. 53



Vincennes Collection
High Neck Lace Front Panel Open Back Leotard
Matte Lycra with Lace

Noir 01
Royal 16
Bordeaux 26
Sedona 107

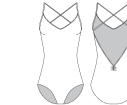
KAIKO 36 > 44 P. 188



Bamboo Collection
Camisole Strap Bamboo Romper with Pockets
Lightweight Bamboo

Noir 01
Nuit 62
Bleu Prusse 70

KAYLA 36 > 44 8 > 12 P. 175



Italienne Collection
Super Low Pinch Back Leotard
Microfiber

Olive 89	Café au Lait 72	Noir 01
French Blue 95	Viola 73	Blanc 02
Medium Orchid 96	Teal 74	Marine 07
Wild Rose 105	Encre Bleu 77	Orchidée 13
	Ruby 82	Royal 16
	Poppy 84	Gris 47


KIMI 36 > 44 P. 183



Bamboo Collection
Sweetheart Cut Cropped Long Sleeve Top
Stretch Bamboo

Noir 01
Nuit 62


● **LAURA** 36 > 44 10 - 12 P. 54



Vincennes Collection
V-Notch Front Pinch Back Tank Leotard
Matte Lycra with Lace

Noir 01
Royal 16
Bordeaux 26
Sedona 107


☆ **LEBLANC** 36 > 44 P. 101



Fontainebleau Collection
High Neck Mock Sweetheart Neckline 3/4 Sleeve Leotard
Matte lycra with Embroidery Over Stretch Mesh

Noir 01
Raspberry 104

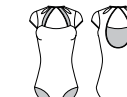
● **LÉONIE** 36/38 - 40/42 8/10 - 12/14 P. 141



Versailles Collection
Wrap Skirt
Stretch Mesh with Velour Print

Noir 01
Blanc 02
Noir with Wild Rose
Aqua with Blanc
Wild Rose with Ivory


LIANA 36 > 44 10 - 12 P. 169



Italienne Collection
Front Cutout Design Open
Marquis Back Cap Sleeve Leotard
Microfiber

Olive 89	Café au Lait 72	Noir 01
French Blue 95	Viola 73	Blanc 02
Medium Orchid 96	Teal 74	Marine 07
Wild Rose 105	Encre Bleu 77	Orchidée 13
	Ruby 82	Royal 16
	Poppy 84	Gris 47

☆ **LICINIA** 36 > 44 10 - 12 P. 145



Tulle Collection
Scoop Front Mock Sweetheart Neckline Open Back Camisole Leotard
Microfiber with Stretch Mesh

Noir 01
Olive 89


● **LUCIENNE** 36 > 44 10 - 12 P. 85



Autriche Collection
Sweetheart High Neck Half Sleeve Leotard
Matte Lycra with Austrian Lace Embroidered Mesh

Bordeaux 26	Noir 01
Poudré 60	Blanc 02
Sedona 107	Marine 07
	Royal 16

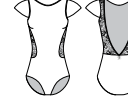
LYNN 36 > 44 8 > 12 P. 115



Garnier Collection
V-Back Boatneck Embroidered Mesh Tank Leotard
Microfiber with Laser Embroidery Mesh

Noir 01
Encre Bleu 77
Medium Orchid 96

● **MAEVA** 36 > 44 10 - 12 P. 131



Dentelle Collection
Cap Sleeve Boatneck V-Back Leotard
Microfiber or Matte Lycra with Lace

Gris 47	Microfiber	Noir 01	Matte lycra
Café au Lait 72		Blanc 02	
Olive 89		Marine 07	
Wild Rose 105		Poudré 60	


☆ **MARVELLE** 36 > 44 P. 103



Fontainebleau Collection
V-Front Open Weave Back Tank Leotard
Matte Lycra with Weaved Strap Elastics

Noir 01
Raspberry 104


MEGUMI 36 > 44 P. 184



Bamboo Collection
Long Sleeve Cropped Twist Top
Stretch Bamboo

Noir 01
Nuit 62
Taupe 63

☆ **MELINE** 36 > 44 P. 99



Fontainebleau Collection
V-Front Mock Sweetheart Neckline Low Back Tank Leotard
Matte Lycra with Embroidery Over Stretch Mesh

Noir 01
Raspberry 104


MIDORI 36 > 44 P. 186



Bamboo Collection
Zipper Hoodie with Mesh Pockets
Stretch Bamboo and Stretch Mesh

Noir 01
Nuit with Noir


☆ **MIETTE** 36 > 44 P. 23



Chantilly Collection
Crew Neck Mock V-Front Open Back Tank Leotard
Microfiber with Cord Embroidery on Stretch Mesh

Noir 01
Wild Rose 105


MILLIE 36/38 - 40/42 8/10 - 12/14 P. 161



Tulle Collection
Ruched Waist
High-Low Pull On Skirt
Stretch Mesh

Buttercup 94	Poudré 60	Orchidée 13	Noir 01
French Blue 95	Café au Lait 72	Aqua 15	Blanc 02
Medium Orchid 96	Viola 73	Royal 16	Rose 03
Wild Rose 105	Teal 74	Royal 17	Ciel 04
Sedona 107	Encre Bleu 77	Lagon 23	Marine 07
	Ruby 82	Bordeaux 26	Prunus 08
	Olive 89	Gris 47	Parme 12


MIO 36 > 44 P. 182



Bamboo Collection
Long Sleeve Cropped Mock Wrap Top
Stretch Bamboo

Noir 01
Nuit 62

● **MIRIELLE** 36 > 44 10 - 12 P. 73




Autriche Collection
Lace Front High Neck Tank Leotard
Matte Lycra with Austrian Lace Embroidered Mesh

Bordeaux 26	Noir 01
Poudré 60	Blanc 02
Sedona 107	Marine 07
	Royal 16

☆ NEW PRODUCT ● NEW COLORS / Marked in Bold

Index

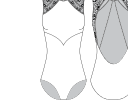
● **MOIRA** 36 > 44 10 - 12 P. 61



Vincennes Collection
Half Sleeve Open Front and Back High Neck Leotard
Matte Lycra with Lace

Noir 01
Royal 16
Bordeaux 26
Sedona 107

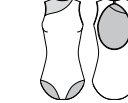
☆ **MOLLIE** 36 > 44 10 - 12 P. 123



Dentelle Collection
Scoop Front Open Strappy Back Sleeveless Leotard
Microfiber or Matte Lycra with Lace

Gris 47	Microfiber	Noir 01	Matte lycra
Café au Lait 72		Blanc 02	
Olive 89		Marine 07	
Wild Rose 105		Poudré 60	


NADÉGE 36 > 44 10 - 12 P. 157



Tulle Collection
Asymmetrical Crew Neck Leotard
Matte Lycra with Stretch Mesh

Royal 17	Noir 01
Bordeaux 26	Blanc 02
Sedona 107	Marine 07
	Royal 16


NATASHA 36 > 44 6 > 12 P. 163



Tulle Collection
Long Sleeve Waist Length Top
Stretch Mesh

Buttercup 94	Poudré 60	Orchidée 13	Noir 01
French Blue 95	Café au Lait 72	Aqua 15	Blanc 02
Medium Orchid 96	Viola 73	Royal 16	Rose 03
Wild Rose 105	Teal 74	Royal 17	Ciel 04
Sedona 107	Encre Bleu 77	Lagon 23	Marine 07
	Ruby 82	Bordeaux 26	Prunus 08
	Olive 89	Gris 47	Parme 12


NINETTE 36/38 - 40/42 8/10 - 12/14 P. 160



Tulle Collection
High Low Pull On Mesh Skirt
Stretch Mesh

Buttercup 94	Poudré 60	Orchidée 13	Noir 01
French Blue 95	Café au Lait 72	Aqua 15	Blanc 02
Medium Orchid 96	Viola 73	Royal 16	Rose 03
Wild Rose 105	Teal 74	Royal 17	Ciel 04
Sedona 107	Encre Bleu 77	Lagon 23	Marine 07
	Ruby 82	Bordeaux 26	Prunus 08
	Olive 89	Gris 47	Parme 12


NOBU 36 > 44 P. 191



Bamboo Collection
Wide Waistband Drawstring Shorts
Stretch Bamboo

Noir 01
Blanc 02
Nuit 62

☆ **NOUVEL** 36 > 44 10 - 12 P. 67



Autriche Collection
V-Front Cross Back Camisole Leotard
Matte Lycra with Austrian Lace Embroidered Mesh

Bordeaux 26	Noir 01
Poudré 60	Blanc 02
Sedona 107	Marine 07
	Royal 16

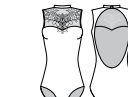
● **ORANE** 36 > 44 10 - 12 P. 151



Tulle Collection
Asymmetrical Mesh Cut Out V-Back Tank Leotard
Microfiber with Stretch Mesh

Noir 01
Olive 89


PARIS 36 > 44 10 - 12 P. 31



Chantilly Collection
Corded Embroidery High Neck Leotard
Microfiber with Cord Embroidery on Stretch Mesh

Noir 01
Café au Lait 72

● **PHOEBE** 36/38 - 40/42 8/10 - 12/14 P. 140





Versailles Collection
Pull On Skirt
Stretch Mesh with Velour Print


Noir 01
Blanc 02
Noir with Wild Rose
Aqua with Blanc
Wild Rose with Ivory

Index

★ NEW PRODUCT 🌿 NEW COLORS / Marked in Bold

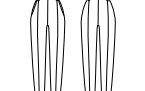
REN 36 > 44 P. 187  **Bamboo Collection** Cropped Hoodie with Kangaroo Pocket Stretch Bamboo Noir 01 Nuit 62

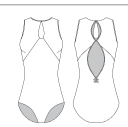
RITA 36 > 44 10 - 12 P. 129  **Dentelle Collection** Round Low Back Tank Leotard Microfiber or Matte Lycra with Lace Gris 47 Café au Lait 72 Olive 89 Wild Rose 105 Microfiber Noir 01 Blanc 02 Marine 07 Poudré 60 Matte Lycra

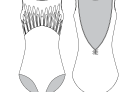
RIVER 36 > 44 10 - 12 P. 155  **Tulle Collection** V-Front Full Back Six-Panel Leotard Microfiber or Matte Lycra with Stretch Mesh Noir 01 Wild Rose 105 Microfiber Sedona 107 Matte Lycra


ROUGE 36 > 44 P. 105  **Fontainebleau Collection** Scoop Front Open Weave Back Tank Leotard Matte Lycra with Weaved Strap Elastics Noir 01 Raspberry 104

SKYLAR 36 > 44 6 > 12 P. 159  **Tulle Collection** Pull On Skirt Microfiber with Stretch Mesh Buttercup 94 French Blue 95 Medium Orchid 96 Wild Rose 105 Sedona 107 Poudré 60 Café au Lait 72 Viola 73 Teal 74 Encre Bleu 77 Ruby 82 Olive 89 Orchidée 13 Aqua 15 Royal 16 Rojo 17 Lagon 23 Bordeaux 26 Gris 47 Noir 01 Blanc 02 Rose 03 Ciel 04 Marine 07 Prunus 08

SORA 36 > 44 P. 192  **Bamboo Collection** Front and Back Seam Cuffed Joggers Stretch Bamboo Noir 01 Nuit 62

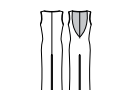
SOSSIA 36 > 44 10 - 12 P. 167  **Italienne Collection** Crew Neck Keyhole Front Double Marquis Back Tank Leotard Microfiber Olive 89 French Blue 95 Medium Orchid 96 Wild Rose 105 Café au Lait 72 Viola 73 Teal 74 Encre Bleu 77 Ruby 82 Poppy 84 Noir 01 Blanc 02 Marine 07 Orchidée 13 Royal 16 Gris 47

TAVIN 36 > 44 10 - 12 P. 25  **Chantilly Collection** Scoop Front Low V-Back Tank Leotard Microfiber with Cord Embroidery Noir 01 Wild Rose 105

THALIE 36 > 44 10 - 12 P. 9  **Louvre Collection** High Neck Front Keyhole Open Back Leotard Microfiber or Matt Lycra with Embroidered Stretch Mesh Aqua 15 Encre Bleu 77 Olive 89 Sedona 107

VALERA 36 > 44 P. 106  **Fontainebleau Collection** Laser Cut Floral Strappy Back Tank Leotard Matte Lycra with Laser Cut Embroidery and Spaghetti Elastic Noir 01 Raspberry 104

VIA 36 > 44 P. 107  **Fontainebleau Collection** Laser Cut Floral Strappy Back Halter Leotard Matte Lycra with Laser Cut Embroidery and Spaghetti Elastic Noir 01 Raspberry 104

YUME 36 > 44 P. 189  **Bamboo Collection** V-Back Straight Leg Jumpsuit Lightweight Bamboo Noir 01 Nuit 62 Bleu Prusse 70

i Color references are merely informative. Colors may vary slightly depending on material and dying batch.

Size Conversion Chart

This chart shows the nearest international conversion for different countries. Size and fit can vary, so please use this chart as a general guide only.

Ballet Rosa	36	38	40	42	44
USA UK Canada Australia Japan	XS	S	M	L	XL
Italy	40	42	44	46	48
Germany Austria Netherlands Sweden Switzerland	34	36	38	40	42
Portugal Spain France Belgium	14a / 36	38	40	42	44

How to Measure

Bust Wrap the measuring tape around the fullest part of your chest, keeping the tape snug but not tight. Ensure it stays level around your back.

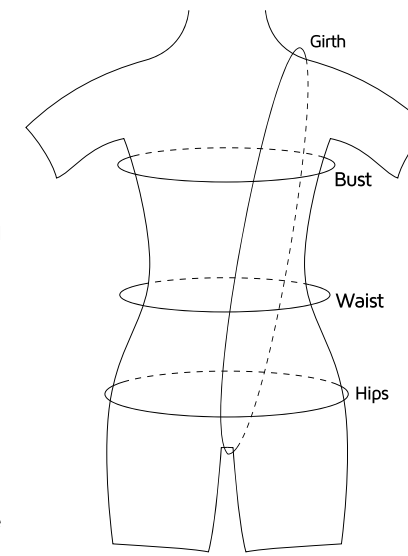
Waist Measure around your natural waistline, typically the narrowest part of your torso, just above the belly button. Keep the tape comfortably fitted.

Hips Stand with your feet together. Wrap the measuring tape around the fullest part of your hips and buttocks, keeping it straight and parallel to the floor.

Girth Start at the top of one shoulder, where a leotard strap would sit. Run the tape measure down through the crotch and back up to the same shoulder, forming a loop. This is crucial for leotard fit.

Inseam Measure from the inner thigh at the crotch down to the bottom of the hem. This measurement determines the leg length for full-length styles.

This guide will help you find your perfect fit for ultimate comfort and freedom of movement.



Ladies cm (inch)



























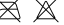




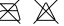



Bust	Waist	Hips	Girth	Size
82-86 (32/34)	60-64 (24/25)	86-92 (34/36)	140 (55)	36
86-92 (34/36)	64-67 (25/26)	92-97 (36/38)	147 (58)	38
92-97 (36/38)	67-72 (27/28)	97-101 (38/40)	152 (60)	40
97-101 (38/40)	73-79 (29/31)	101-106 (40/42)	157 (62)	42
101-106 (40/42)	79-84 (31/33)	106-112 (42/44)	162 (64)	44

Youth cm (inch)

Bust	Waist	Hips	Girth	Size
51-53 (20/21)	48-51 (19/20)	53-58 (21/23)	89-96 (35/38)	4
55-58 (22/23)	53-55 (21/22)	58-63 (23/25)	99-106 (39/42)	6
60-63 (24/25)	53-58 (21/23)	63-68 (25/27)	109-116 (43/46)	8
66-71 (26/28)	58-63 (23/25)	68-73 (27/29)	117-126 (47/50)	10
73-78 (29/31)	66-71 (26/28)	76-81 (30/32)	117-126 (50/53)	12

These charts should be used as a general fitting guide only. Size availability and individual sizing may vary by style.

Washing Instructions by Material

MATERIAL	COMPOSITION	INSTRUCTIONS
Microfiber	90% Polyamide · 10% Elastane	    
Matte Lycra	80% Polyamide · 20% Elastane	    
Stretch Mesh	94% Polyamide · 6% Elastane	    
Lace	84% Polyamide · 16% Elastane	    
Stretch Bamboo	90% Bamboo Rayon · 10% Elastane	    
Lightweight Bamboo	100% Bamboo Rayon	    
Printed Mesh	94% Polyester · 6% Elastane	    

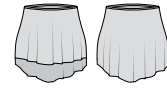
Wash and Special Care

Garments with embellishments or embroidery require extra care. Ballet Rosa is not responsible for damages due to excessive wear or improper care. To keep your Ballet Rosa pieces in excellent condition, please follow all care instructions and wash labels closely, as each material has unique care requirements.

- **Hand wash** in cold water with a mild detergent
- **Do not iron** or tumble dry
- **Dry flat** to preserve shape and fabric quality

Please note: Prolonged intense sweating and body heat may affect colors and durability over time. Proper care will help maintain the beauty and longevity of your garments.

Skirt Sizes cm (inch)



Erika

Size	Waist	Back Length	Front Length
8-10	57-61 (22.4/24)	33 (13)	25 (9.8)
12-14	62-65 (24.4/25.6)	34 (13.4)	26 (10.2)
36-38	66-71 (26/27.9)	36 (14.2)	29 (11.4)
40-42	72-78 (28.3/30.7)	36 (14.2)	29 (11.4)



Evana

Size	Waist	Back Length	Front Length
8-10	57-61 (22.4/24)	30 (11.8)	25 (9.8)
12-14	62-65 (24.4/25.6)	31 (12.2)	26 (10.2)
36-38	66-71 (26/27.9)	35 (13.8)	30 (11.8)
40-42	72-78 (28.3/30.7)	35 (13.8)	30 (11.8)



Phoebe

Size	Waist	Back Length	Front Length
8-10	57-61 (22.4/24)	27 (10.6)	22 (8.7)
12-14	62-65 (24.4/25.6)	27 (10.6)	22 (8.7)
36-38	66-71 (26/27.9)	30 (11.8)	27 (10.6)
40-42	72-78 (28.3/30.7)	30 (11.8)	27 (10.6)



Ivy

Size	Waist	Back Length	Front Length
8-10	57-61 (22.4/24)	30 (11.8)	25 (9.8)
12-14	62-65 (24.4/25.6)	31 (12.2)	26 (10.2)
36-38	66-71 (26/27.9)	35 (13.8)	30 (11.8)
40-42	72-78 (28.3/30.7)	35 (13.8)	30 (11.8)



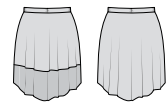
Léonie

Size	Waist	Back Length
8-10	57-61 (22.4/24)	25 (9.8)
12-14	62-65 (24.4/25.6)	25 (9.8)
36-38	66-71 (26/27.9)	30 (11.8)
40-42	72-78 (28.3/30.7)	30 (11.8)



Skylar

Size	Waist	Back Length	Front Length
6	54-57 (21.3/22.4)	22 (8.7)	19 (7.5)
8	58-60 (22.8/23.6)	23 (9)	20 (7.9)
10	60-62 (23.6/24.4)	25 (9.8)	22 (8.7)
12	63-65 (24.8/25.6)	25 (9.8)	22 (8.7)
36	66-68 (26/26.8)	33 (13)	27 (10.6)
38	69-71 (27.2/28)	33 (13)	27 (10.6)
40	72-75 (28.3/29.5)	33 (13)	27 (10.6)
42	76-78 (29.9/30.7)	33 (13)	27 (10.6)
44	79-82 (31.1/32.3)	33 (13)	27 (10.6)



Millie

Size	Waist	Back Length	Front Length
8-10	57-61 (22.4/24)	58 (22.8)	33 (13)
12-14	62-65 (24.4/25.6)	60 (23.6)	34 (13.4)
36-38	66-71 (26/27.9)	62 (24.4)	36 (14.2)
40-42	72-78 (28.3/30.7)	62 (24.4)	36 (14.2)



Ninette

Size	Waist	Back Length	Front Length
8-10	57-61 (22.4/24)	54 (21.3)	28 (11)
12-14	62-65 (24.4/25.6)	54 (21.3)	28 (11)
36-38	66-71 (26/27.9)	57 (22.4)	33 (13)
40-42	72-78 (28.3/30.7)	57 (22.4)	33 (13)



Fabia

Size	Waist	Long Side	Short Side
36-38	66-71 (26/27.9)	74 (29.1)	54 (21.3)
40-42	72-78 (28.3/30.7)	74 (29.1)	54 (21.3)



As we close this year's catalog, our hearts are filled with joy and gratitude for everyone who brought this collection to life. This journey of creativity and artistry would not be possible without the dedication of our talented team, the grace of our dancers, and the inspired vision of our designers. Each page reflects countless hours of collaboration, passion, and shared love for the art of dance. We extend our deepest thanks to you—our cherished community—for joining us in this celebration of movement, beauty, and expression. Here's to another year of dancing together!

Thank you

Photography

Joe Lyman
LymanDVM Photography

Director

Victoria Lyman Guimarães

Graphic Design

QOOB Design Studio

Professional Dancers

Peyton Lilly Bond
Nikita Boris
Melissa Gelfin
Kirsten Hunsberger
Sirui Liu
Rie Matsura
Tatiana Melendez
Sophie Miklosovic

Simone Muhammad
Taylor Nichols
Katherine Ochoa
Amanda Perez
Minori Sakita
Chloé Sherman
Salomé Tregere
Kayleigh Western

Hair and Makeup

Cass Brake
Laurie McSwain
Tom Venditelli

Photography Assistant

Faith Lyman

Wardrobe Assistants

Ruth Arnold
Ava Carlson
Hannah Case
Mary Dearborn

Special thanks to

Hilary Strode Lyman

Follow us on:



Headquarters

Rua da Peça, 1 · Ronfe
4805-427 Guimarães
Portugal

Customer Service (Europe and Asia)

Phone +351 253 519 143
customerservice@balletrosa.com

Ballet Rosa USA

2114 Central Street
Evanston, IL 60201
United States of America

Customer Service (US and Canada)

Phone +1 (312) 439-6733
usa@balletrosa.com

balletrosa.com